

BESTSELLER

Histology



9985-1000312

3B MICROanatomy™ Liver

This 2-part model shows a highly magnified diagrammatic view of a section of the liver. The left part of the model shows a section of the liver that comprises several lobules. The right part of the model is a highly magnified view of the sectioned lobule on the left.

15x26x18.5 cm; 0.7 kg

L/E/D/S/F/P/I/J [www.](http://www.somatco.com)

9985-1000312



9985-1000260

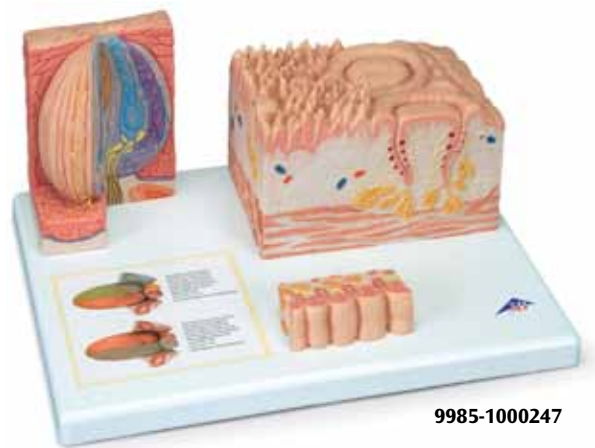
3B MICROanatomy™ Eye

This model illustrates the microscopic structure of the retina with choroid and sclera. The left block like, layered side of the model side shows the complete structure of the retina including the vascular layer and parts of the sclera from a light microscopic view. The right part of the model is a sectional enlargement. It shows the microscopic structure of the photoreceptors and the cells of the pigmented layer.

25x23x18.5 cm; 1.2 kg

L/D/E/F/S/P/I/J [www.](http://www.somatco.com)

9985-1000260



9985-1000247

3B MICROanatomy™ Tongue

The latest model in our 3B MICROanatomy™ series, the tongue, is fascinating because it combines enlargements of various different parts of the tongue in one model. It comprises a macroscopic view of the tongue in life size (dorsal view) and microscopic views of the various papillae of the tongue (10-20x life size) and of a taste bud (approx. 450x life size). All views are mounted on a base that also features an overview of the sensory and sensitive innervation of the tongue. A unique model for an intensive study of the tongue.

14.5x32.5x20 cm, 0.8 kg

L/D/E/F/I/S/P/J/R/C [www.](http://www.somatco.com)

9985-1000247

Intestinal Villi, 100 times life-size

This model consists of one entire villus, one longitudinally sectioned villus showing the arterioles and venules and one sectioned villus to show the lymphatic vessels. Also includes a longitudinal section of Lieberkühn's crypt. On base.

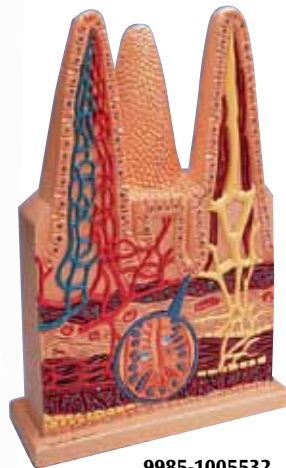
43x28x10 cm; 2.5 kg

9985-1005532

Anatomy



9985-1000311



9985-1005532

3B MICROanatomy™ Digestive System

The model illustrates the structure of the fine tissues of four characteristic sections of the digestive system: oesophagus, stomach, small intestine, large intestine. The front of the model, from top to bottom, shows a magnified view in histological section of the individual sections of the digestive system and their fine tissue structures. On the back of the model, highly magnified views of didactically interesting areas of each of the digestive system sections shown on the front are emphasized.

29.5x26x18.5 cm; 1.5 kg

L/E/D/S/F/P/I/J [www.](http://www.somatco.com)

9985-1000311

Connect With Us

