

Dental Disease, magnified 2 times, 21 parts

With 16 removable adult teeth magnified two times. One half of the model shows eight healthy teeth and healthy gums. The other half of the model shows the following dental diseases:

- Dental plaque
- Dental calculus (tartar)
- Periodontitis
- Inflammation of the root
- Fissure, approximal and smooth surface caries.

One part of the front bone section can be removed to view the roots, vessels and nerves. Two molars are sectioned along the length to show the inside of the tooth.

Delivered on a base.

25.5 x 18.5 x 18cm; 0.6 kg

E/D/F/S/P/I/J www.somatco.com

9982-1000016



9982-1000016

Giant Dental Care Model, 3 times life-size

This model, large enough to be seen from the back of a classroom, shows the upper and lower half of an adult's dentition. A flexible joint between the jaws allows easy movement. Teach children proper cleaning techniques using the giant toothbrush included with this model.

18x23x12 cm; 1.5 kg

9982-1000246

Replacement Parts for 9982-1000246

Giant Toothbrush

36.5 cm

9982-4000098



9982-1000246

9982-4000098

Dentition Development

Cast from a natural specimen, 4 upper and lower jaw halves, 4 different stages of development:

- New born
- Approx. 5-year old child
- Approx. 9-year old child
- Young adult

33x10x20 cm; 0.5 kg

L/D/E/F

9982-1000248



9982-1000248



9982-1000222

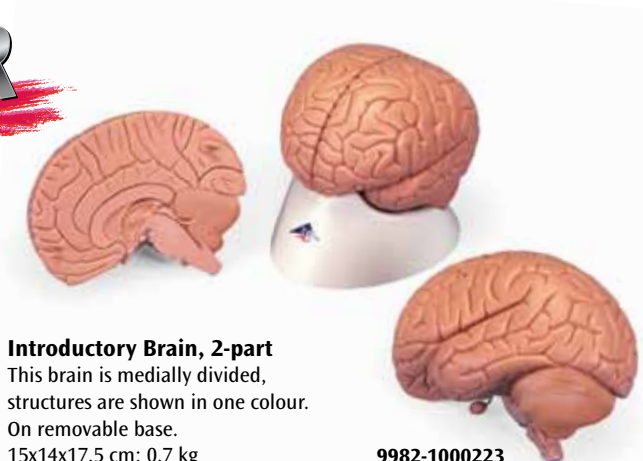
Brain, 2-part

A medially divided brain, perfect for beginning studies because of its affordable price. Delivered on removable base.

15x14x17.5 cm; 0.7 kg

L/D/E/F/S/P/I/J www.somatco.com

9982-1000222



9982-1000223

Introductory Brain, 2-part

This brain is medially divided, structures are shown in one colour. On removable base.

15x14x17.5 cm; 0.7 kg

9982-1000223

Connect With Us

