



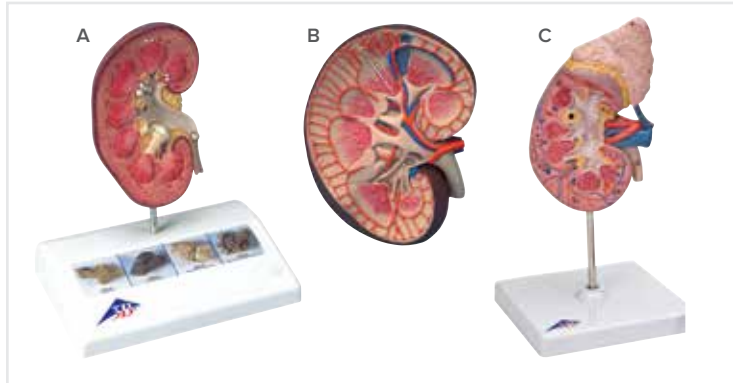
MICROanatomy™ Kidney

This extremely detailed model shows the functional units of the kidney greatly magnified. Mounted on a base. 23,5 x 25,5 x 19 cm; 1,3 kg

Six model zones illustrate the following fine-tissue structures:

- Longitudinal section of a kidney
- Section of renal cortex and renal medulla of the kidney
- Wedge-shaped section of a kidney lobe with three nephrons with Henle's loops of different lengths and diagrammatic depiction of the vascular supply
- Nephron with a short Henle's loop and didactic illustration of the vascular supply
- Opened renal corpuscle with nephron and light-microscopic transverse sections of the proximal, attenuated and distal segments of a renal tubule

M-1000301



A. Kidney Stone Model

A great tool to inform patients about kidney stones and urinary stones. It shows an opened right kidney in natural size. 14 x 10 x 16,5 cm; 0,18 kg

The renal calices, the renal pelvis, and the ureter are opened as well as enabling concretions or stones to be identified in the following typical positions:

- In the area of the renal pyramids
- In the area of origin of the upper calix group
- In the renal cortex
- In the connecting tubule of the lower calix group, causing congestion of the minor calices (partially closed, partially opened) in the ureter
- 4 original colour pictures on the base show various kidney stones.

M-1000316

B. Kidney Section, 3 Times Full-Size

This colourful and anatomically accurate model depicts a longitudinal section of the human right kidney. All important structures of the human kidney are shown. No baseboard included. 8,5 x 19 x 26 cm; 0,9 kg

M-1000295

C. Kidney with Adrenal Gland, 2-part

The front half of the kidney is removable to enable demonstration of cortex medulla and vessels for teaching about the human kidney. The renal pelvis of the kidney is also displayed. 20 important structures of the human kidney are included in the anatomy key. Kidney with adrenal gland model comes on stand. 20 x 12 x 12 cm; 0,3 kg

This high quality human kidney model shows:

- Kidney with adrenal gland
- Renal and adrenal vessels of the kidney
- Upper portion of ureter for the human kidney

M-1014211



Inguinal Hernia Model

A useful model to help inform patients before undergoing surgical interventions. This natural-sized, graphic model shows the anatomical structures of a male groin with an indirect inguinal hernia, opened in layers. Two illustrations on the base allow for a comparison of direct and indirect hernias. Mounted on base. 14 x 10 x 18 cm; 0,28 kg

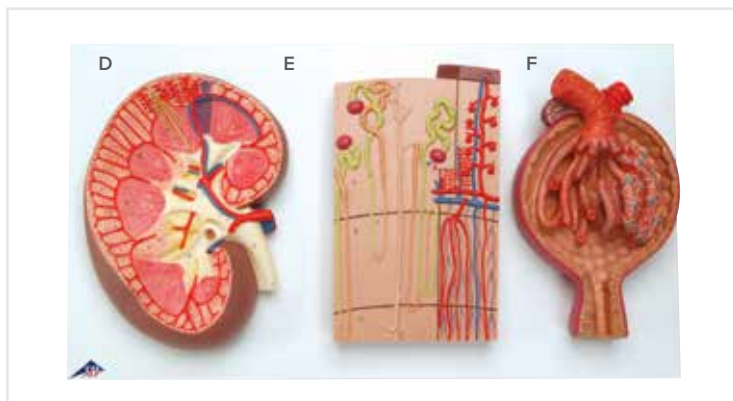
M-1000284



Haemorrhoid Model

The model is a life-size frontal section of the rectum as well as a smaller relief on a pedestal. In addition to the anatomical structures of the rectum (sphincter, mucous membrane, venous plexus), the model shows internal haemorrhoids during stage I and II as well as external haemorrhoids. The relief exhibit shows haemorrhoids during stage III and IV. Mounted on base. 14 x 10 x 14 cm; 0,2 kg

M-1000315



Kidney, Nephrons, Blood Vessels and Renal Corpuscle

A complete series of 3 models mounted on a baseboard allowing study of the kidney and its different structures in great detail. 29 x 52 x 9 cm; 2,8 kg

Together they show:

- A longitudinal section of the right kidney, 3 times life-size (M-1000296)
- A nephron depicting a section through renal cortex and medulla. Also features the renal corpuscles with proximal and distal convoluted tubules, loops of Henle, collecting tubules, and blood vessels. 120 times life-size (M-1000296)
- An opened Malpighian corpuscle with glomerulus and Bowman's capsule. 700 times full-size (M-1000298).

M-1000299

Available Individually:

- D. Kidneys
- E. Nephrons and Blood Vessels
- F. Malpighian Corpuscle of Kidney

- M-1000296
- M-1000297
- M-1000298