

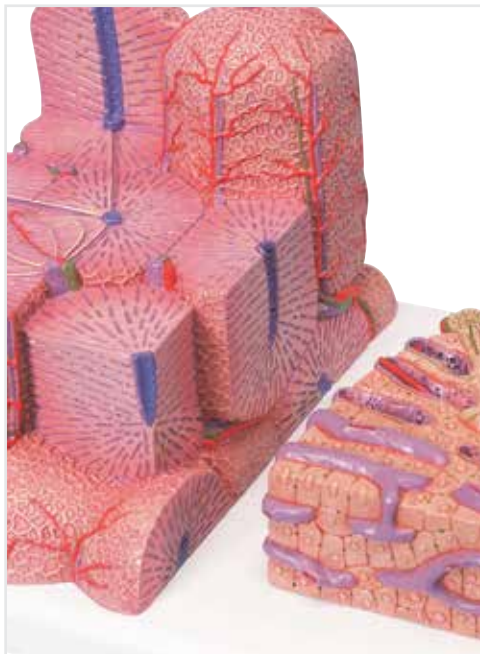
► Bestseller

MICROanatomy™ Liver

This 2-part model shows a highly magnified view of a section of the liver. It illustrates the functional and structural components with two different enlargements. The left part shows a section of the liver that comprises several liver lobules. The right part of the model is a highly magnified view of the sectioned liver lobule on the left.

15 x 26 x 18,5 cm; 0,7 kg

M-1000312



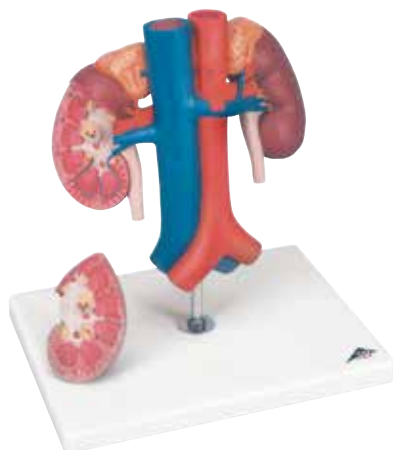
Liver with Gall Bladder, Pancreas and Duodenum

This highly-detailed relief model provides a detailed look at the liver with:

- Ducts
- Gall bladder
- Pancreas
- Duodenum
- Vessels
- Extrahepatic ducts with gall bladder
- Main pancreatic duct and their orifices

4 x 20 x 18 cm; 0,8 kg

M-1008550

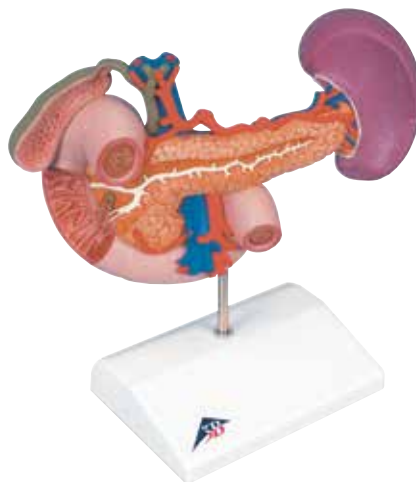


Kidneys with Vessels, 2-part

Life-size model presenting the kidneys with suprarenal glands, the outgoing ureters, the renal vessels, and the large vessels situated close to the kidneys. The front half of the right kidney can be removed to reveal the renal pelvis, the renal calices, the renal cortex, and the renal medulla.

Comes on stand. 21 x 18 x 28 cm; 1 kg

M-1000308



Rear Organs of Upper Abdomen

Representing the duodenum, which is partially opened, along with opened gall bladder and bile ducts. The model also includes the pancreas, revealing large ducts, the spleen, and the surrounding vessels, all in natural size.

Comes on stand. 23 x 12 x 20 cm; 0,55 kg

M-1000309



Kidneys with Rear Organs of Upper Abdomen, Combo Model, 3-part

A combination of models M-1000308 and M-1000309. The 3-part model includes upper abdominal organs which are attached in their natural positions and are removable from the kidneys. Comes on stand. 24 x 18 x 29 cm; 1,4 kg

M-1000310



Gallstone Model

The anatomy of the biliary system and its surroundings are shown at half natural size in this graphic model for education. Both acute inflammation and the tissue changes caused by chronic inflammation can be identified in the gallbladder wall. Mounted on base. 14 x 10 x 19 cm; 0,2 kg

M-1000314



Liver with Gall Bladder

This high quality liver with gallbladder replica is delivered on removable stand. 18 x 18 x 12 cm; 0,5 kg

This realistic liver with gall bladder shows:

- 4 Lobes with gall bladder
- Extrahepatic ducts
- Hilus vessels.

M-1014209

Connect With Us



Digestive & Renal System | **Anatomy**

