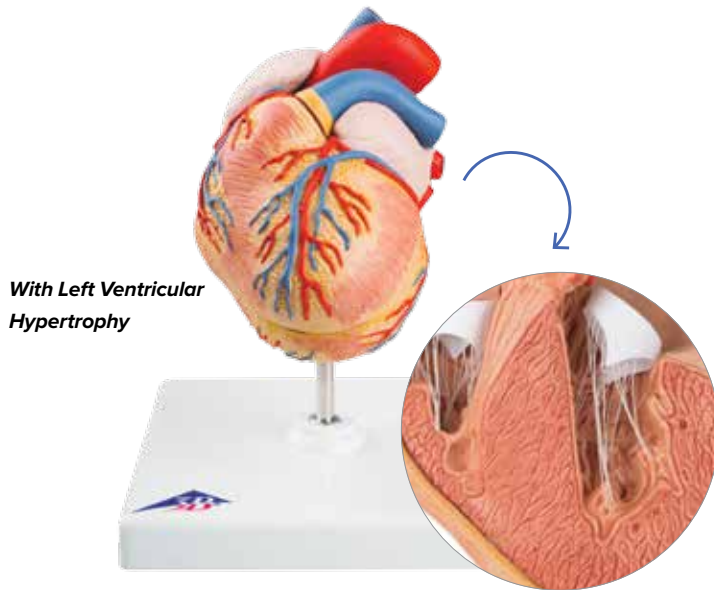




Classic Heart Model Series

- Removable parts for closer study
- Ideal for student and patient education
- Durable & virtually unbreakable material



With Left Ventricular Hypertrophy

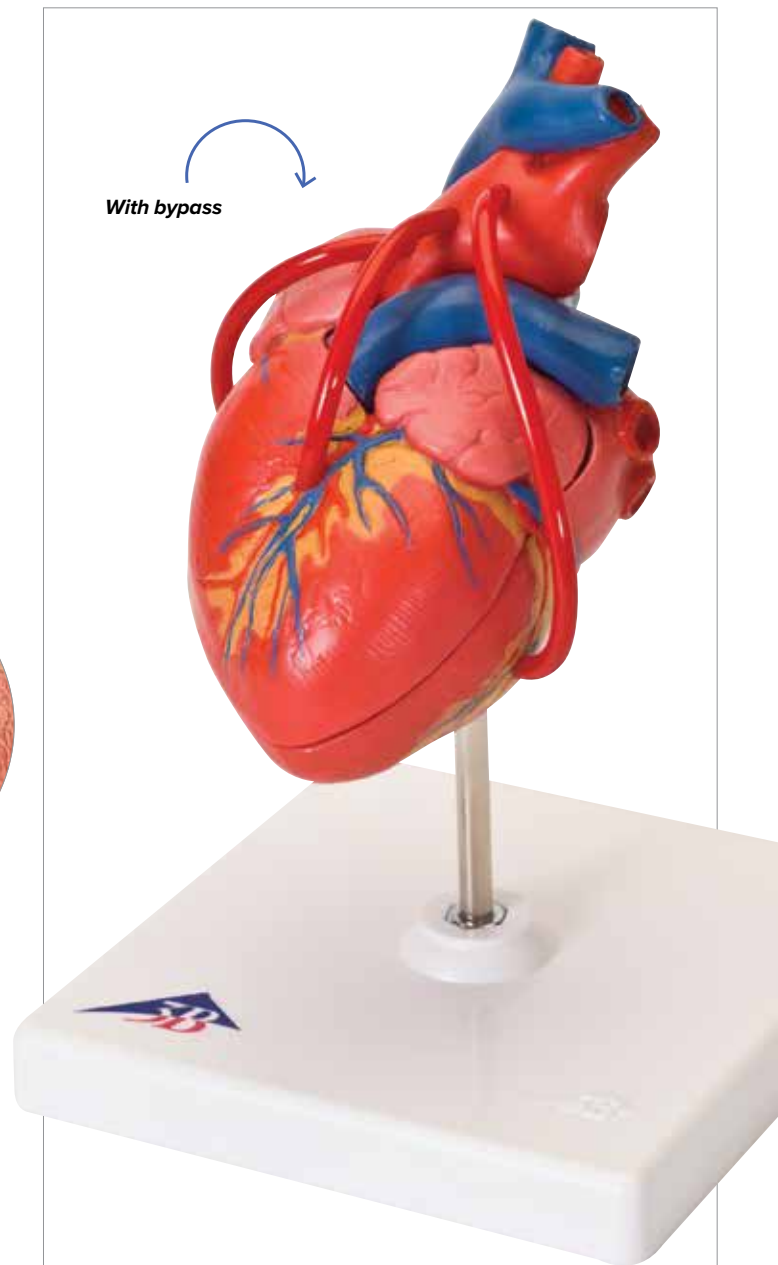
Classic Heart with Left Ventricular Hypertrophy (LVH), 2-part

In addition to all the features of the 2-part classic heart, this unique model shows the **long-term effects of increased heart activity due to high blood pressure**. The muscular wall of the left heart ventricle is considerably thickened and the tip of the heart is visibly rounded off. The front heart wall is detachable to reveal the chambers and valves inside.

On removable stand.

12 x 12 x 14 cm; 0.45 kg

M-1000261



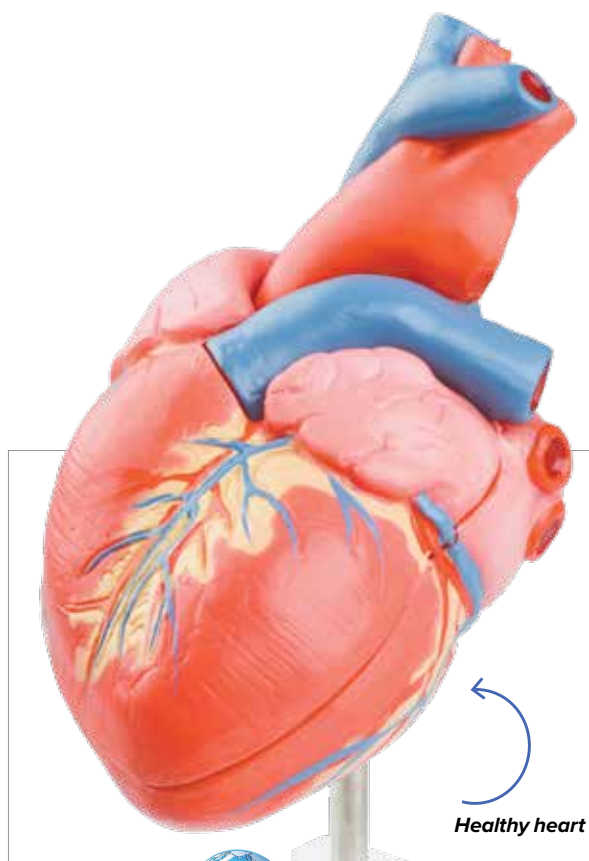
With bypass

Classic Heart with Bypass, 2-part

With all the features of the 2-part classic heart, but also **includes venal bypasses** to the right coronary artery, to the ramus interventricularis anterior, and also to the ramus circumflexus of the left coronary artery, which are shown in colour. This model is a great aid in explaining coronary heart disease.

On removable stand. 19 x 12 x 12 cm; 0.35 kg

M-1017837



Healthy heart

Classic Heart, 2-part

The 2-part classic heart is highly detailed and at a price you will love. Just slightly smaller than life-size with exquisite detail throughout including ventricles, atria, valves, veins, and the aorta. The front heart wall is detachable to reveal the chambers and valves inside. On removable stand.

19 x 12 x 12 cm; 0.3 kg

M-1017800