

### Deluxe Human Demonstration Dental Skull Model, 10 part

#### Exceptional quality and anatomical detail!

The skullcap is removable and the base of the skull is mid-sagittally divided. The anatomy of the human skull is easy to learn and teach using this model.

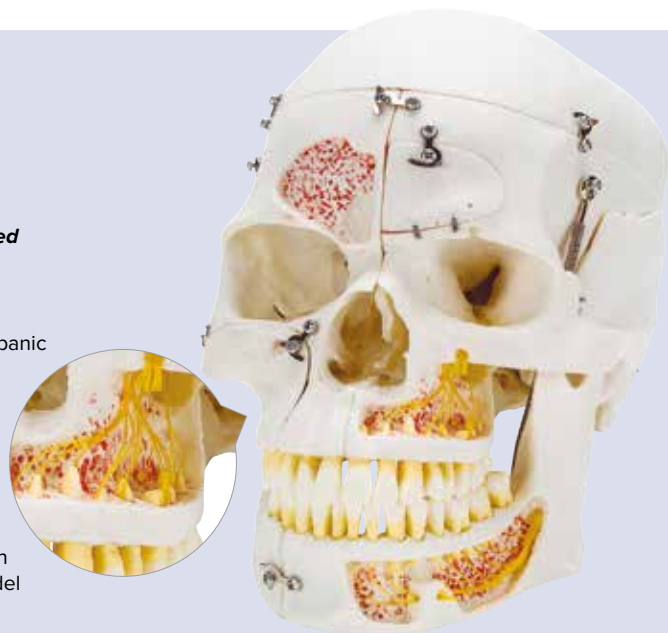
#### The model features the following details fitted with flaps that can be opened to view internal structures:

- Frontal sinus, perpendicular lamina and vomer can be opened to view the lateral nose wall and sphenoidal sinus
- Left side temporal bone can be removed and folded up in the area of the tympanic membrane
- Maxilla and mandible of the skull are opened to reveal the alveolar nerves
- Right side the temporal bone is opened to reveal the sigmoid sinus, the facial nerve canal and the semicircular ducts
- Right side flap at maxillary sinus and the right half of the mandible, so that the dental roots of the premolars and molars of the lower jaw can also be viewed

The natural occlusion and the individual removal and replacement of each tooth also make this skull especially interesting for dentists. This is a spectacular model whether you use it as a dental skull or for other purposes.

28 x 22.5 x 18.5 cm; 1.5 kg

**M-1000059**



### Skull with Facial Muscles

Easily **demonstrate causes of temporo-mandibular disorders** and other dysfunctional disturbances of the masticatory muscles with this high quality skull model. It is **anatomically precise** and manufactured specifically to **withstand wear and tear from educational use**. The right half features the face and mastication muscles. They can easily be **differentiated by colour**. Cranium and m. masseter are easily detachable to reveal the structures underneath. The left side shows hand-painted muscle origins and insertions to **further clarify the structural interaction** of muscles and skull bones. The jaw is movable and due to the flexible musculature the **rudimentary chewing motion can be demonstrated**. Made in Germany and cast from an original human skull, using our highest quality material.

18 x 18 x 25 cm; 1.08 kg

**M-1020181**



### Neurovascular Skull Model

This life size human adult skull comes on seven cervical vertebrae and is mounted on a sturdy stand. It is a valuable tool to demonstrate the anatomy and positioning of the arteries and the nerves on the skull. The skull cap is removable and reveals the main nerves and arteries on the floor of the cranium. With this skull, you can demonstrate the 12 cranial nerves (and their branches) that arise directly from the brain and pass through separate apertures in the skull.

17 x 16 x 30 cm; 1.3 kg

**M-1005108**