

Spinal Cord, 6 times full-size
 This model shows a segment of the upper thoracic spinal cord, laterally and longitudinally divided showing spinal nerve roots. Supplied on baseboard.
 35.5x27x27 cm; 0.75 kg
E

W42505

Nervous System, 1/2 life-size
 This relief model shows a schematic representation of the central and peripheral nervous system. An excellent model to study the structure of the human nervous system. Supplied on baseboard.
 80x33x6 cm; 3.5 kg
L/E/D/S/F/P/I/J [www.](http://www.3b.com)

C30

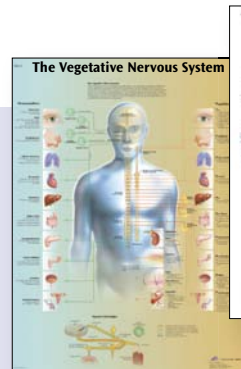


C30

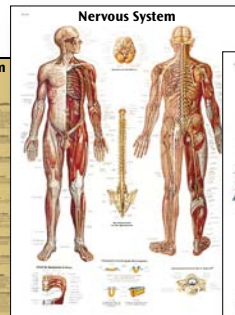


W42505

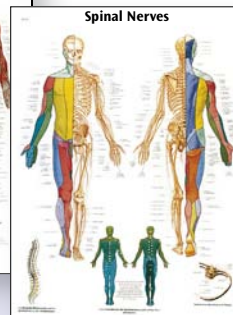
You will find our large selection of Charts starting on page 106.



VR1610



VR1620



VR1621



V2037

V2038

Eye, 5 times full size, 6-part

Removable parts include:

- Upper half of the sclera with cornea and eye muscle attachments
- Both halves of the choroid with iris and retina
- Lens
- Vitreous humour

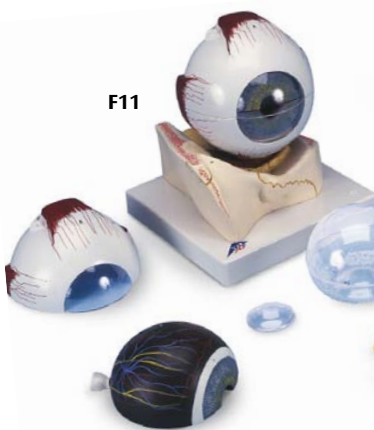
On base.

13x14x21 cm; 0.6 kg

L/E/D/S/F/P/I/J [www.](http://www.3b.com)

F10

BESTSELLER



F11



F10

F12

Eye, 5 times full size, 7-part

On base of bony orbit.

Same features as F10.

18x18x20 cm; 1.0 kg

L/E/D/S/F/P/I/J [www.](http://www.3b.com)

F11



Eye, 5 times full size, 8-part

Shows eyelid, lachrymal system, and other features around the eyeball, otherwise the same as F10. On base of bony orbit.

20x18x21 cm; 1.2 kg

L/D/E/F

F12