

A27



### Deluxe Demonstration Skull, 10-part

This replica of the human skull is of an exceptional quality. The skullcap is removable and the base of skull is mid-sagittally divided. The frontal sinus, perpendicular lamina and vomer are fitted with flaps which can be opened to view the lateral nose wall and sphenoidal sinus. On the left half, the temporal bone can be removed and folded up in the area of the tympanic membrane. Maxilla and mandible are opened to reveal the alveolar nerves. On the right side the temporal bone is opened to reveal the sigmoid sinus, the facial nerve canal and the semicircular ducts. Additional flaps are located at the maxillary sinus and the right half of the mandible, so that the dental roots of the premolars and molars of the lower jaw can also be viewed. The natural occlusion and the individual removal and replacement of each tooth also make this skull especially interesting for dentists. 28x22.5x18.5 cm; 1.5 kg

A27

### Didactic Skull on Cervical Spine, 4-part

This model uses 19 didactic colours to demonstrate the shapes and relationships of the various bone plates of the skull. Flexibly mounted on the cervical spine (C1, C2 and C7 are coloured), this model also shows the hind-brain, spinal cord, spinal nerves of the cervical spine, vertebral arteries, basilar artery and rear cerebral arteries. Mounted on a stand. 18x18x30 cm; 1.4 kg

E/D/S/F/P/J [www.3b-bone.com](http://www.3b-bone.com)

A20/2



A29/1

### Microcephalic Skull

Skull of a young male. This one-part microcephalic skull has an alveolar abscess of the right maxilla with the canine tooth suspended in the abscess. The molars exhibit severe attrition. 27 teeth. Natural cast. 23x16.5x17 cm; 0.8 kg

A29/1



A27/9

### Deluxe Demonstration Skull with Display Case

48x39x36 cm; 4.8 kg

A27/9



A29/2

### Hydrocephalic Skull

The enlarged cerebral cranium is typical of this severe malformation. The skullcap of the one part skull is partially covered by bone skin. The lower right canine and the right molar are decayed. Natural cast. 28x23x19.5 cm; 0.8 kg

A29/2

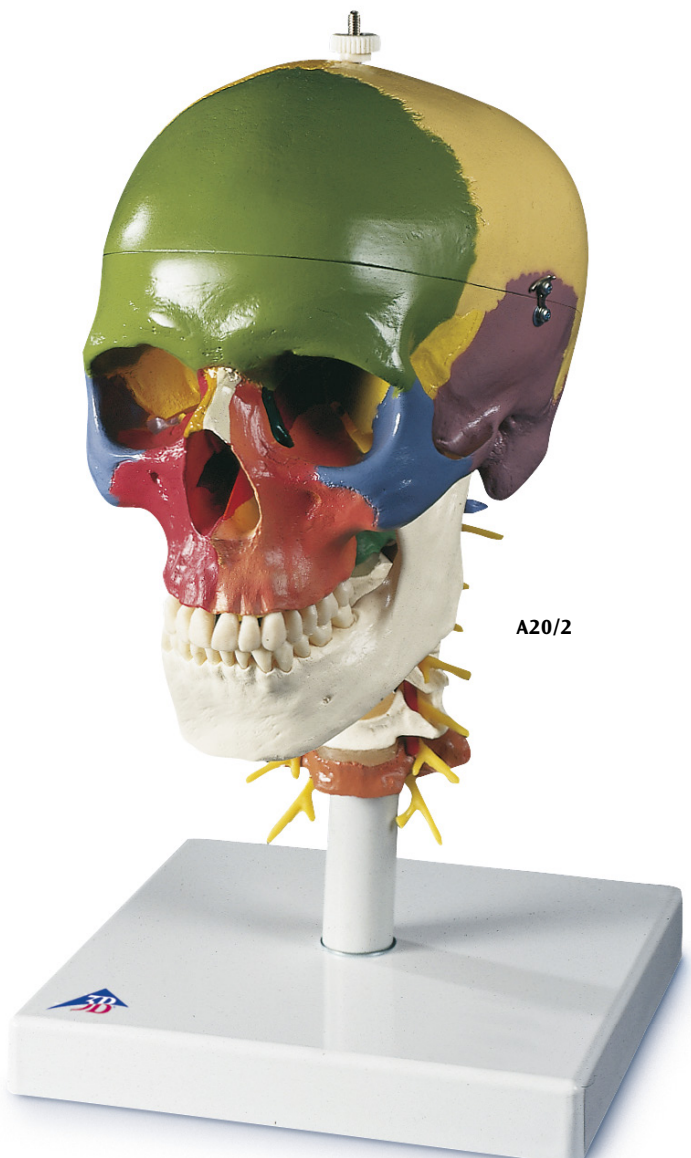


A29/3

### Skull with Cleft Jaw and Plate

Male. Severe malformation of the left skull half. The one part skull has 29 teeth. Natural cast. 28x23x19.5 cm; 0.8 kg

A29/3



A20/2