



### Head with Neck, 4-part

The left half of this life-size model in midsagittal section shows the muscles, with nerves, vessels and bony structures and contains a removable brain half. The head is mounted on a detachable neck part which is sectioned both horizontally and diagonally. Supplied on baseboard.

28x19x23 cm; 2.2 kg

L/D/E/F/S/P/J [www.](http://www.somatco.com)

C07

### Asian Deluxe Head with Neck, 4-part

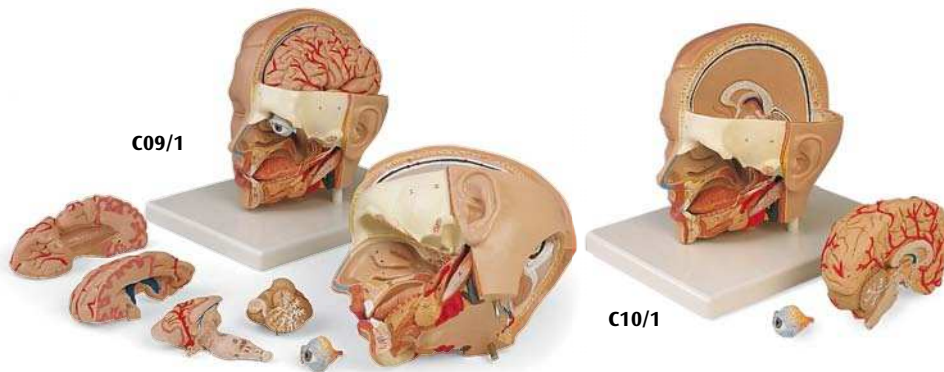
Same as C07, but with Asian features.

28x19x23 cm; 2.2 kg

L/E/D/S/F/P/J [www.](http://www.somatco.com)

C06

Head



### Head Model, 6-part

Our most detailed head model! This life-size 6-part head is mounted on a base and features a removable 4-part brain half with arteries. The eyeball with optic nerve is also removable and one side exposes the nose, mouth cavity, pharynx, occiput and skull base. On removable base.

19x23x22 cm; 1.0 kg

L/D/E/F

C09/1

### Head Model, 3-part

This life-size 3-part head is mounted on a stand and features a removable brain half with arteries, eyeball and optic nerve and one side which exposes the nose, mouth cavity, pharynx, occiput and skull base. On removable base.

19x23x22 cm; 1.1 kg

L/D/E/F

C10/1



C13

C12

### Median and Frontal Section of the Head

2 relief models on baseboard.

41x31x5 cm; 1.45 kg

L/D/E/F

C13

### Median Section of the Head

This relief model shows all relevant structures of the human head in great detail. On baseboard.

26x33x5 cm; 1.0 kg

L/D/E/F

C12

### Half Head with Musculature

Representation of the outer, superficial and the internal (median section) structures of head and neck. Delivered on removable stand.

22x18x46 cm; 1.1 kg

L/D/E/F

C14

### Head and Neck Musculature, 5-part

Representation of the superficial musculature and deep muscles, nerves and vessels. Dissectible into skull cap and 3-part brain. Delivered on removable baseboard.

36x18x18 cm; 1.8 kg

L/D/E/F/S/P/I/J [www.](http://www.somatco.com)

C05

Connect With Us



...going one step further

سوماتكو  
SOMATCO  
[www.somatco.com](http://www.somatco.com)



Anatomy