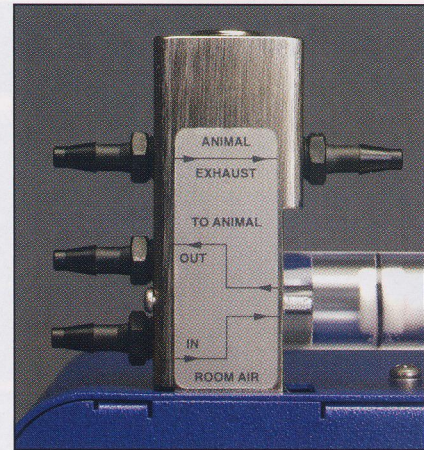
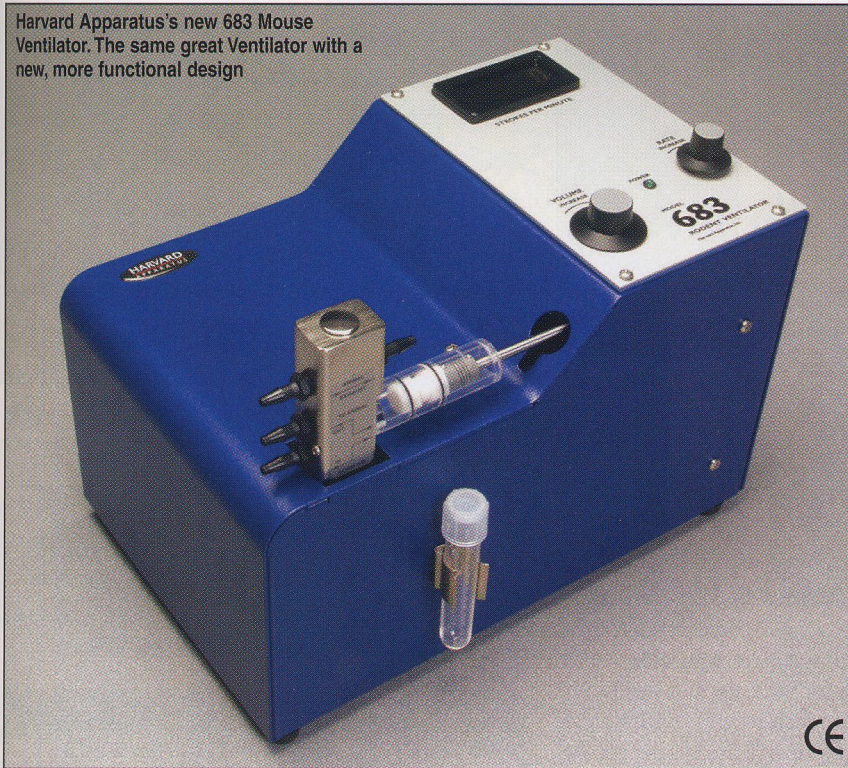


NEW Mouse (687) and Small Animal (683) Volume Controlled Ventilators

Harvard Apparatus's new 683 Mouse Ventilator. The same great Ventilator with a new, more functional design



- Two models available:
 - **Model 683** for small animals from 250 g to 10 kg (22 lb) e.g. rats, hamsters, rabbits, cats, monkeys, small dogs, etc.
 - **Model 687** for mice and perinatal rats up to 200 g (7 oz)
- CE approved

Harvard Apparatus is proud to announce the NEW 683 and 687 Ventilators. Beside the sleek new look, these ventilators have some advantages over the older style ventilators:

- Ability to monitor PEEP
- New tubing graduated sizing connectors that accommodate different size tubing easily
- Permanent etched volume graduations on the cylinder so they can't rub off
- Volume and rate control are now linear

The Model 683 Small Animal Ventilator comes standard with two piston and cylinder assemblies. The smaller piston (which comes installed) allows tidal volumes to be set from 0.5 to 5.0 cc in 0.5 cc increments and the larger cylinder allows tidal volumes of 3.0 to 30 cc in 0.3 cc increments. Setting the cylinder stroke between graduations it is possible to achieve finer resolution in tidal volume settings.

The Model 687 Mouse Ventilator has a single piston and cylinder assembly. The tidal volume range is 0.1 to 1 cc in 0.1 cc increments. Setting the cylinder stroke between graduations it is possible to achieve finer resolution in tidal volume settings. For both ventilator models, the piston travels to the end of the cylinder completely emptying the cylinder and minimizing the dead space of the breathing circuit.

Both models feature a numerical LED to display the respiratory rate which can be set from 18 to 150 strokes/minute. Volume and rate settings can be adjusted while the ventilator is running. Both ventilators have four gas inlet and outlet ports: supply gas in, gas out (to animal), gas return (from animal) and ventilator exhaust. The ventilator exhaust can be attached to a column of water to achieve PEEP (positive end expiratory pressure) when long term animal ventilation is necessary.

Overhaul kits are available for both ventilator models and are specific for the type of cylinder used. Overhaul kits include complete instructions and replacement parts.

Specifications

Rate	Adjustable from 18 to 150 strokes/min while the ventilator is running	
Phase Ration	1:1 fixed	
Dimensions, H x L x W	25 x 32.5 x 15 cm (10 x 13 x 6 in)	
Weight	8 kg (18 lb)	
Power	115/230 VAC, 50/60 Hz	
Ventilator	Small Animal	Mouse
Tidal Volume	Adjustable from 0.2 to 30 ml/stroke while the ventilator is running	Adjustable from 0.05 to 1 ml/stroke while the ventilator is running
Port Size:		
ID	3.5 mm (1/8 in)	2.2 mm (0.086 in)
OD	5 mm (3/16 in)	4 mm (5/32 in)
Model	683	687

Catalog No.	\$	Product
BS4 55-0000		Model 683, Small Animal Volume Controlled Ventilator
BS4 55-0001		Model 687, Mouse Volume Controlled Ventilator
BS4 55-5281		Overhaul Kit for 687 Ventilator with 1 cc Cylinder*
BS4 55-5282		Overhaul Kit for 683 Ventilator with 5 cc Cylinder*
BS4 55-5283		Overhaul Kit for 683 Ventilator with 30 cc Cylinder*
BS4 55-5284		Overhaul Kit for Older 68x Ventilators, including Models 680, 681 and 683 ventilators without a numeric LED rate display*

*Overhaul Kits do not include cylinder