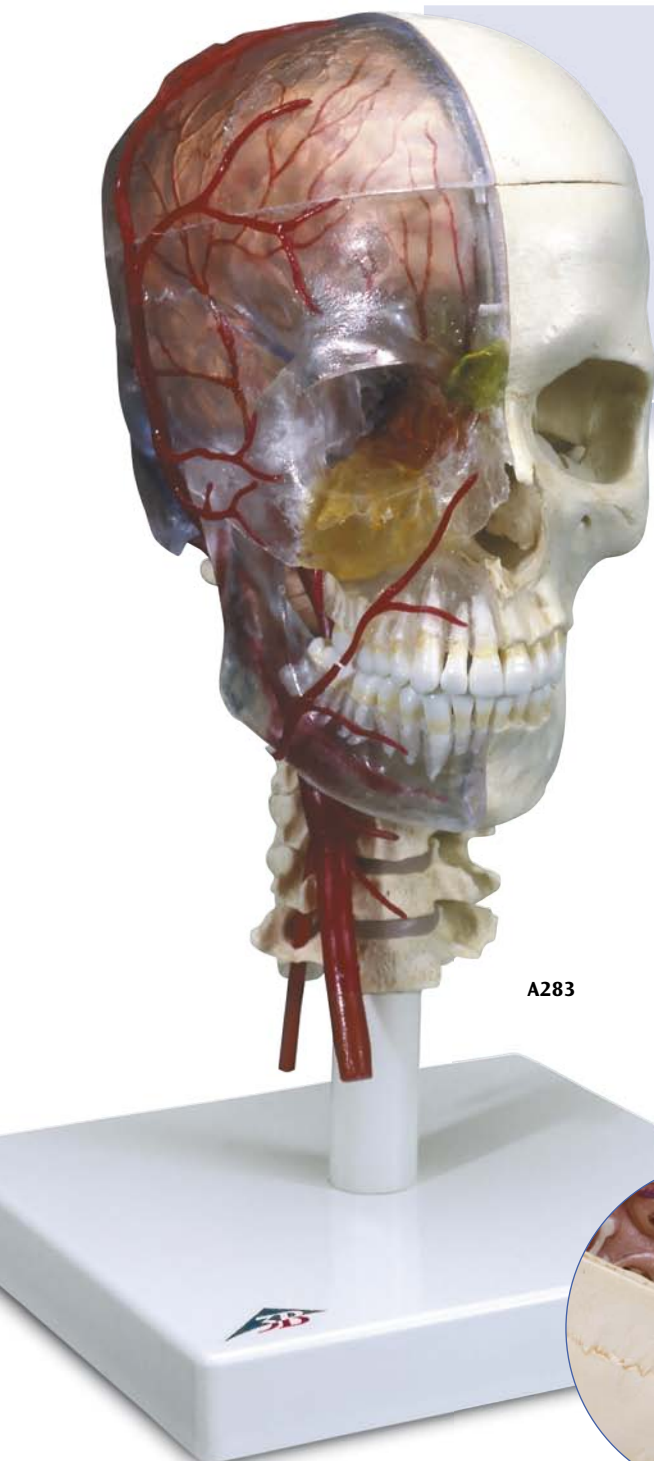


Unique Worldwide

The starting point for our absolutely realistic 3B Scientific® Systematic Skull was the accurate cast of a perfect original. Specialised production processes and materials guarantee the precise replication of even the minutest anatomical structures. 3B BONElike™ bones look real, feel absolutely natural and weigh the same as natural bones. If you want the world's best skull, our 3B BONElike™ models are just the thing for you! (Please also read the endorsements for 3B BONElike™ bones on page 31.)



A283

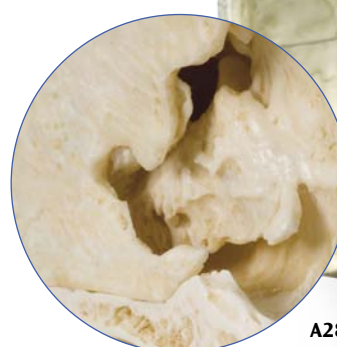
3B BONElike™ System Skull – Didactic Deluxe Skull, 7-part

This unique and high quality model will leave no questions in the study of skull anatomy unanswered! The ability to transfer the structures visible on the transparent half to the bony half give this skull a special didactic value. On the right, transparent skull half the paranasal sinuses can be easily located even from the outside, since these are marked in different colours: maxillary sinus (yellow), ethmoidal cells (orange), frontal sinus (green), sphenoidal sinus (purple). The cranial sinuses and the neck and face arteries are also shown in colour: sinuses of dura mater (blue), common carotid artery, external and internal carotid artery and the branches of the meningeal artery (red). One brain half, which is also visible through the skullcap, allows visualization of the position of the brain and the course of the sinuses. The periodontal pockets and tooth roots can be seen through the transparent jaw. The lower jaw is mounted flexibly to demonstrate the masticator movements. The skull is mounted on a cervical spine and can be disassembled into both halves of the skullcap, the left half of the base of skull, the nasal septum, the complete mandible and a brain half.

35x18x18 cm; 1.0 kg

E/D/S/F/P/J www.3bscientific.com

A283



A280

3B BONElike™ System Skull – Bony Skull Half, 4-part

The left bony half skull has been designed especially for the student's budget. The half skull can be disassembled into skullcap, base of skull, mandible and nasal septum. An affordable first class model to study all anatomical structures.

16x7x21 cm; 0.25 kg

E/D/S/F/P/J www.3bscientific.com

A280