

Blotting Membrane Rolls

Supplied in 0.24x3m and 0.3x3m (w x l) sizes, allowing them to be cut to match specific gel formats, these membrane rolls are suitable for transfer of proteins and nucleic acids from polyacrylamide and agarose gels. Offered in 0.2 and 0.45µm pore sizes.

ORDERING INFORMATION	
Code	Description
CSL-RNC45	Nitrocellulose roll, 0.3x3m (w x l)
CSL-RNC2	Nitrocellulose roll, 0.3x3m (w x l)
CSL-RNY45	Positively charged supported nylon, 0.24x3m (w x l)
CSL-RNY2	Positively charged supported nylon, 0.24x3m (w x l)

TECHNICAL SPECIFICATIONS		
Code	Pore Size	Recommended Applications
CSL-RNC45	0.45µm	For most analytical blotting procedures, including protein, single-stranded DNA & RNA; compatible with colorimetric, radiolabelled, chemiluminescent and fluorescent detection and staining methods
CSL-RNC2	0.2µm	For small proteins <15kDa
CSL-RNY45	0.45µm	For Southern blots and transfer of nucleic acids from agarose and acrylamide gels; rapid alkaline Southern transfer
CSL-RNY2	0.2µm	

PVDF Sheets & Membrane Rolls

Used in Western Blotting of Proteins and for use in Hybridisation Techniques. PDVF with nitrocellulose and nylon membranes are available for different application needs. A protein's properties (i.e., charge, hydrophobicity, etc.) affects its ability to bind to membrane surfaces. Finding the optimal membrane may require experimenting with your specific protein on different materials. We supply PVDF membrane in sheet form and as a 3M roll which can be cut to size to fit your particular need.

ORDERING INFORMATION	
Code	Description
CSL-PVDF0.22S	10 Pre-cut PVDF 28 x28 cm 0.22 µm
CSL-PVDF0.45S	10 Pre-cut PVDF 28 x28 cm 0.45 µm
CSL-PVDF0.45R	Roll PVDF 28 cm x 3 m, 0.45 µm
CSL-PVDF0.22R	Roll PVDF 28 cm x 3 m, 0.22 µm

Blot-Absorbent Filter Paper

Cleaver Scientific blot-absorbent filter paper is supplied in packs of 50 and in sizes of 10x10cm and 20x20cm. Its 1-mm-thick texture and high buffer retention properties, being able to absorb twice its own weight in buffer, allow it to exert the gel-membrane compression needed for efficient transfers.

ORDERING INFORMATION	
CSL-BP1010	Blot-Absorbent Filter paper, 10x10cm, pack of 50
CSL-BP2020	Blot-Absorbent Filter paper, 20x20cm, pack of 50

Ponceau S

Ponceau S staining solution is reusable and available in a convenient 500ml volume for membrane staining and early protein detection following transfer before western blotting. Ponceau S may also be supplied a powder staining kit for long-term storage.

ORDERING INFORMATION	
CSL-PSS	Ponceau S staining solution (500ml)
CSL-PSB	Ponceau S staining solution powder staining kit (makes 2000ml)



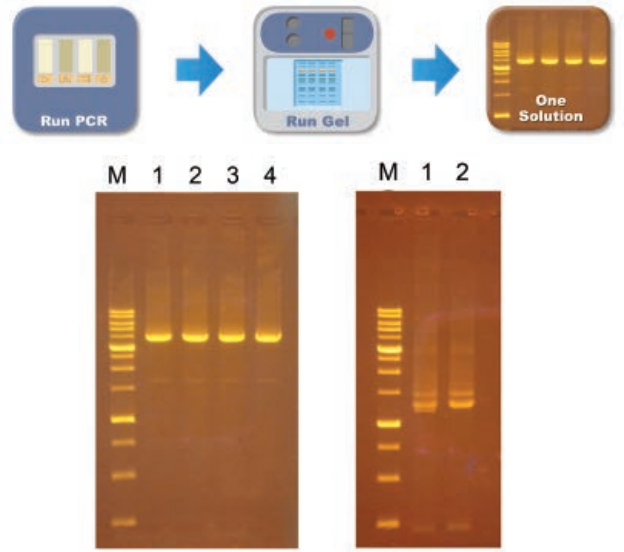
Connect With Us



FEATURES:

- Ready-to-use, pre-mixed 2x PCR® MasterMix that contains Taq DNA Polymerase, PCR buffer, dNTPs, and fluorescent stain and loading dye for electrophoresis post-PCR
- Just mix with an equal volume of DNA and primer solution, perform PCR and then run the resultant products straight out on an agarose gel without prior mixing with loading dye
- No agarose gel staining and destaining necessary
- UV- and blue-light fluorescent; perfect for runVIEW (Pg 28)
- Contains Thermus Aquaticus Taq DNA polymerase - expressed and purified from recombinant E. coli – with 5'-3' polymerase and exonuclease activities
- Lack of 3'-5' exonuclease and proofreading activity makes 'Just-Add-DNA' useful for PCR-based site-directed mutagenesis applications
- As sensitive as ethidium bromide, but without the mutagenicity and associated environmental and disposal hazards
- Long shelf-life: stable for 3 months at room temperature and up to a year at -20°C
- Supplied in two 1.25ml vials to make up to 100 PCR reactions, each of 50µl final volume
- Ideal for use in the GTC96S thermal cycler (Pg 123)

ORDERING INFORMATION	
CSL-JADNA	'Just-Add-DNA' MasterMix, 2x 1.25ml vials, sufficient for 100 reactions
CSL-JADNA-10	'Just-Add-DNA' MasterMix, 20x 1.25ml vials, sufficient for 1000 reactions
CSL-RV-JA-DNA	CSL-runVIEW PCR kit for users already with thermal cycler; incl. CSL-RVMSCHOICETRIO plus CSL-JADNA-10
CSL-GTC96-JA-DNA	CSL-GTC96S PCR kit for users already with runVIEW or an electrophoresis system; incl. CSL-GTC96S plus CSL-JADNA-10
CSL-GTC96-RV-JA-DNA	Complete PCR/real-time DNA electrophoresis workstation; incl. CSL-GTC96S & CSL-RVMSCHOICETRIO, plus CSL-JADNA-10



Ligation compatible: 'Just-Add-DNA' has no adverse effect on ligation of PCR products following PCR. Recombinant plasmids containing identical insert after amplification with standard PCR (1) and 'Just-Add-DNA' (2) master mixes. Stable for at least 3 months at room temperature.

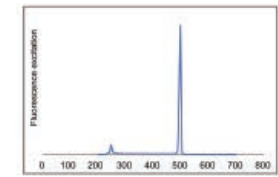


Fig. 1a: Fluorescence excitation spectra of the fluorescence dye

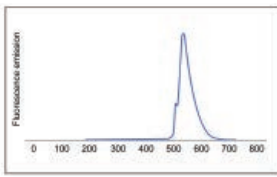


Fig. 1b: Fluorescence emission spectra of the fluorescence dye

Fluorescence excitation and emission maxima of the fluorescent stain within 'Just-Add-DNA'. Excitation is maximal around 490nm with a secondary peak at 490nm. Fluorescence emission is maximal at around 550nm.

'Just Add DNA' PCR® MasterMiX

'Just-Add-DNA' is a ready-to-use PCR® MasterMix that requires only water, DNA primers and template to execute primer elongation or the DNA polymerisation step of PCR®. With 'Just-Add-DNA' MasterMix time-consuming MasterMix preparation is rendered unnecessary, as Taq DNA polymerase, PCR buffer, deoxynucleotides (dNTPs), gel-loading dye and fluorescent stain are already premixed at 2x concentration, and may be dispensed in 25µl aliquots to an identical volume of DNA template and primer solution. Once mixed, PCR may be performed as usual and the resultant PCR products then checked following transfer from the thermal cycler block to an agarose gel, which is visualised on a UV transilluminator or by using runVIEW - our award-winning blue-light real-time horizontal gel electrophoresis system (Pg 28).

TYPICAL APPLICATIONS

Membranes, stains and reagents for blotting

TYPICAL APPLICATIONS

All in one PCR mix plus electrophoresis safe stain for direct loading onto gels