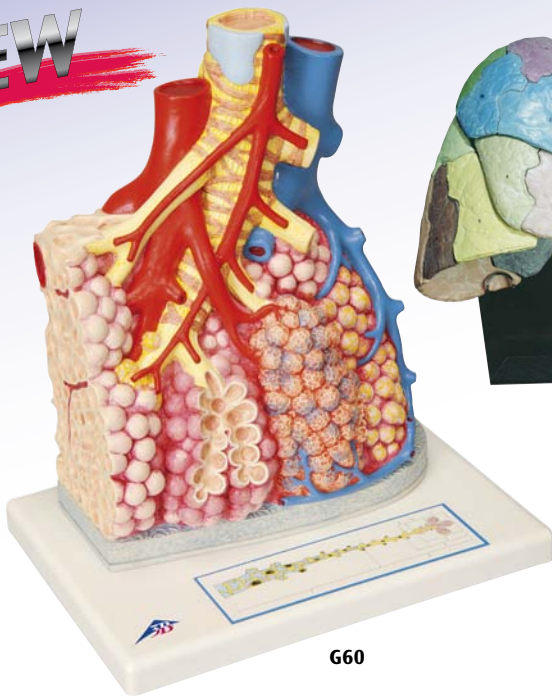


**NEW**

Lung / Heart



G60

**Pulmonary Lobes**

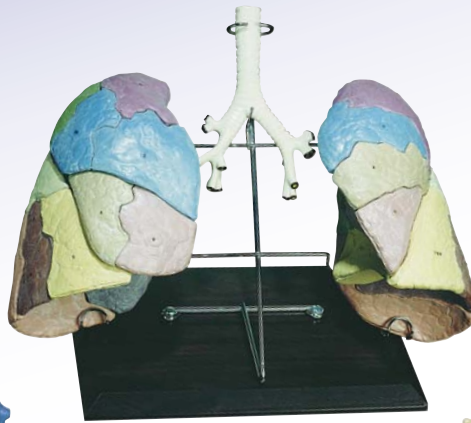
The model shows an external pulmonary lobe with a magnification of 130x. The following are represented:

- Segmental bronchus and its terminal branches (bronchioles)
- Alveolus opened on the right side
- Pulmonary vessels and their capillary networks
- Branch of a bronchial artery
- Pulmonary pleura
- Connective tissue septum on the left side
- Single opened alveolus with surrounding capillary network with a magnification of approx. 1000x on the rear side

A graphic representation on the stand of the model shows the structure of the air routes in the lungs up to the alveolus. 26x33x19 cm; 1.4 kg

**L/D/E/S/F/P/J/C/R**

G60



W47029

**Segmented Lung Reproduction**

Cast from actual human lungs with representation of bronchial tree, bronchioles and alveoli. 18 coded segments held together elastically to allow easy viewing of the internal structures. Supplied on stand. 30x25x26 cm; 1.5 kg

**E**

W47029



G15

**Lung Model with Larynx, 7-part**

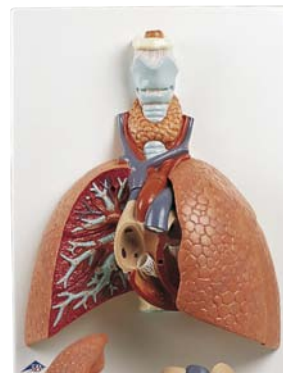
This first class model contains the following removable parts:

- 2-part larynx
- Trachea with bronchial tree
- 2-part heart
- Subclavian artery and vein
- Vena cava
- Aorta
- Pulmonary artery
- Oesophagus
- 2-part lung (front halves removable)
- Diaphragm

On baseboard. 31x41x12 cm; 2.2 kg

**L/D/E/F**

G15



VC243

**Lung Model with Larynx, 5-part**

Showing the following features:

- Larynx
- Trachea with bronchial tree
- 2-part heart (removable)
- Vena cava
- Aorta
- Pulmonary artery
- Oesophagus
- 2-part lung (front halves removable)

Delivered on baseboard.

12x28x37 cm; 1.25 kg

**L/D/E/F/S**

VC243

**BESTSELLER**



G08



G08/1



**Classic Heart, 2-part**

Highly detailed 2-part heart at a price you will love. The front heart wall is detachable to reveal the chambers and valves inside. Just slightly smaller than life size with exquisite detail throughout.

On stand.

19x12x12 cm; 0.3 kg

**L/E/D/S/F/P/J www.**

G08

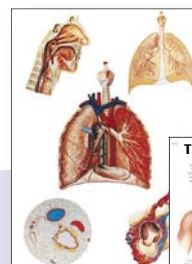
**Classic Heart with Thymus, 3-part**

Same features as G08, also including thymus.

20x12x12 cm; 0.3 kg

**L/E/D/S/F/P/J www.**

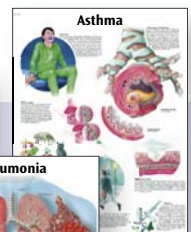
G08/1



V2036



VR1322



VR1328



VR1326

*You will find our large selection of Charts starting on page 106.*

Anatomy