

3B Scientific® Models of Cell Division

These three dimensional relief models are painted according to the usual colouring methods of microscopy, making the process of cell division easy to understand. The cell organelles are shown opened up in the lower part of the models. The models are equipped with magnets on the back so that for teaching purposes, they can be arranged easily on a magnetic board in the classroom. The model series is supplied in a storage system (40x60 cm) which can be fastened to the wall. A detailed description and handouts for your lessons are included.



R01

Mitosis Model

Shows the 9 stages of mitosis on the basis of a typical mammal cell at an enlargement of approx. 10,000 times:

1. Interphase
2. Prophase
3. Early prometaphase
4. Later prometaphase
5. Metaphase
6. Early anaphase
7. Later anaphase
8. Telophase
9. Cytokinesis

Tip: As a useful addition and permanent eye catcher in the classroom we recommend the matching wall chart "Mitosis" (product number V2049M, V2049U).

60x40x6 cm; 1.5 kg

E/D/S/F/P/J [www.](http://www.3b.com)

R01

Meiosis Model

Shows the 10 stages of meiosis on the basis of a typical mammal cell at an enlargement of approx. 10,000 times:

1. Interphase (stage of G1-phase)
2. Prophase I (leptotene)
3. Prophase I (zygotene and pachytene)
4. Prophase I (diplotene)
5. Prophase I (diakinesis)
6. Metaphase I
7. Anaphase I
8. Telophase I, cytokinesis I, interkinesis, prophase II and metaphase II
9. Anaphase II
10. Telophase II and cytokinesis II

Tip: As a useful addition and permanent eye catcher in the classroom we recommend the matching wall chart "Meiosis" (V2051M, V2051U).

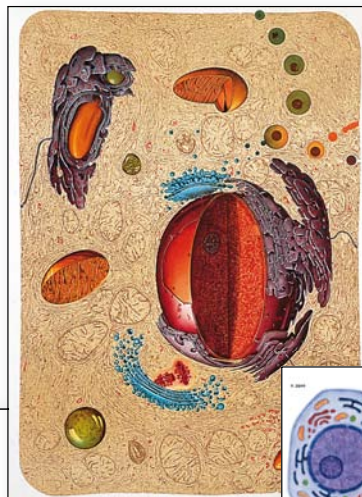
60x40x6 cm; 1.7 kg

E/D/S/F/P/J [www.](http://www.3b.com)

R02

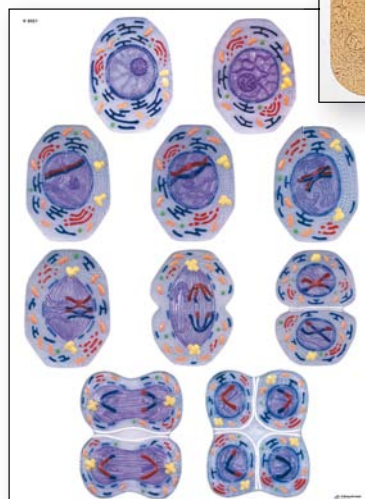


R02

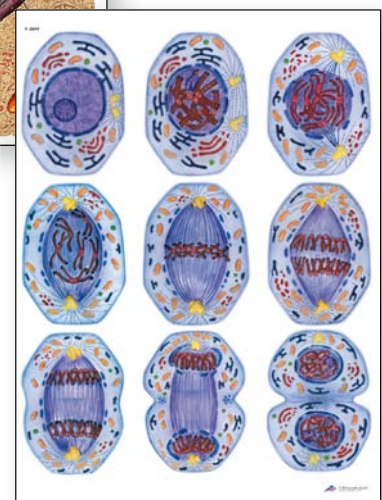


V2027
Human Cell Structure

You will find our large selection of Charts starting on page 106.



V2049 Cell Division I, Mitosis



V2051 Cell Division II, Meiosis