



W47006

Deluxe Leg

Cast from natural bone specimen. Bones of foot, tibia and fibula, femur, coccyx, sacrum and innominate articulated.

- Depicts all major muscles and nerves of the hip, knee and foot
- Hip articulation shown with a capsule
- Femur can be removed
- "Bucket Handle" tear depicted on knee
- Physiological movement

Stand included.
102x41x30.5 cm; 7.7 kg

E

W47006

Muscular Leg, 7-part

This life size model can be disassembled into upper and lower leg. The following muscles can be detached:

- Sartorius muscle
- Gluteus maximus muscle
- Rectus femoris muscle
- Long head of biceps femoris muscle with semitendinous muscle
- Gastrocnemius muscle

Supplied on base.

100 cm; 7.0 kg

L/D/E/F/S/P/J www.

M21



M21

M34/1

see page 22



M20

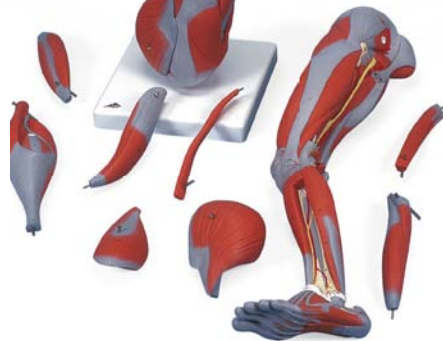
Muscular Leg, 9-part

The model illustrates both the superficial and deeper muscles, eight of which are removable. Tendons, vessels, nerves and bone components of the left leg and foot are shown in great detail. Parts numbered. Delivered on removable stand.

77x26x26 cm; 4.0 kg

L/D/E/F/S/P/I/J www.

M20



W47007

see page 38

A881



see page 37

Lower Muscled Leg with Knee, 3-part

This life size model can be divided horizontally at the knee joint for viewing the joint structures. The gastrocnemius muscle can be detached. Supplied on a base.

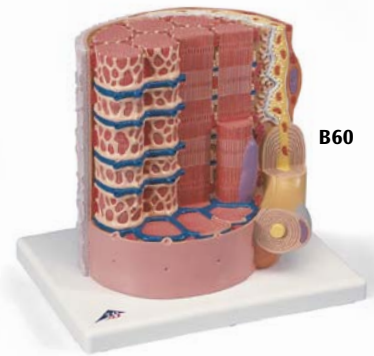
58 cm; 2.6 kg

L/D/E/F/S/P/J www.

M22



M22



B60

3B MICROanatomy™ Muscle Fibre

The model illustrates a section of a skeletal muscle fibre and its neuromuscular end plate magnified approx. 10.000 times. The muscle fibre is the basic element of the diagonally striped skeletal muscle.

23.5x26x18.5 cm; 1.1 kg

L/E/D/S/F/P/I/J

B60



A882

see page 37

Connect With Us

