

ROTO SILENTA 630 RS

Hettich
ZENTRIFUGEN



**Floorstanding
Centrifuge,
refrigerated**

سوماتکو
SOMATCO
www.somatco.com



ROTO SILENTA 630 RS



The ROTO SILENTA 630 RS offers outstanding performance in fast, efficient centrifuging of blood bags and large sample volumes. It accommodates a maximum capacity of 6 x 2,000 ml or 12 x 750 ml blood bag systems.

Excellent stability even at high speeds makes the ROTO SILENTA 630 RS a rugged and reliable centrifuging partner. When in use, the cooled large-volume centrifuge rests on high-quality vibration dampers.

To ensure mobility, it is supplied with castors onto which the ROTO SILENTA 630 RS can be lowered, as required.

Optimal running performance guarantees best separation results. The low noise level makes agreeable working conditions. The extensive range of carriers and adapters for blood collection tubes, standard tubes, bottles and various blood bag systems can be centrifuged in one rotor – changing rotors is not necessary.

The Hettich data report system HettInfo as well as customised solutions enable GMP performance and meet the high standards of user safety and product quality in blood banks and transfusion centres.

PERFORMANCE

- High RCF without windshield
 - up to 6,500 x g at 4,500 min⁻¹.
- High capacity
 - max. 6 x 2,000 ml or 12 x 750 ml blood bag systems
- Efficient cooling
 - controllable from – 20 °C to + 40 °C (with model 5005-50 from – 20 °C to + 60 °C).
 - Precooling is effected by programming one of the 89 programmable memories.

TECHNOLOGY

- Frequency-controlled drive, virtually maintenance-free
- Powered lid locking
- Ergonomic rail-grip for easy lid closing
- Large viewing port in the lid for optical speed control with a stroboscope

SAFETY

- Imbalance switch-off
- Rotor recognition
- Key-operated switch for locking and protecting programs
- Lid locking and holding
- Lid dropping protection
- Motor and chamber overheating protection
- Torsion-free steel chassis
- Smooth, easy to clean surfaces

ROTO SILENTA 630 RS
with bar code unit (option),
dimensions (H x W x D):
973 x 813 x 1,015 mm
(without bar code unit),
973 x 888 x 1,015 mm
(with bar code unit).
On request, the scanner
can also be mounted on
the left panel.

Cat.-No. 5005



ROTO SILENTA 630 RS

...programming with effortless ease



Whether entering single parameters or chaining complete running programs, the clearly arranged display with its selector keys and adjusting knob provides for extreme user-friendliness. The controls and displays of the ROTO SILENTA 630 RS are arranged according to ergonomic aspects. The large display is clearly arranged and well readable. During centrifugation the actual values of all parameters are indicated.

For special routine or scientific applications the ROTO SILENTA 630 RS can be fitted with the following optional equipment:

Centrifuging data report system HettInfo
details on next page

Visual indication

when the rotor is stationary

for additional information on the completion of a centrifuging cycle.

Chaining of programs

allows to program the centrifuge to run different programs in succession.

Second independent tachometer system




for calibrating the speed measuring instrument as required by quality management systems.

ROTO SILENTA 630 RS control panel: Entry of the parameters is exact, fast and easy with selector keys on the foil keypad and the adjusting knob.

DISPLAY

- PROG-Nr** Program number.
89 programmable memories are available.
- T/°C** Temperature.
- PROFIL** Run-up and run-down profile.
- n/min⁻¹** Speed indication.
- t/min:sec** Centrifugation time (max. 999 min : 59 sec).

KEYPAD

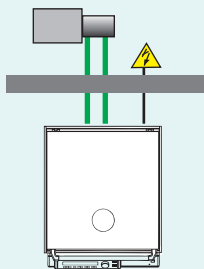
- STO** Stores the program.
- RCL** Calls up the selected program.
- PROG** Selects the program menu.
-  Entry of the temperature from -20 °C to +40 °C in increments of 1 °C.
-  Entry of the run-up time in ramps 1-9 or in min : sec.
-  Entry of the run-down time in ramps 1-9 or in min : sec. Unbraked run-down or a brake force cut-off speed can be selected.
- RCF** Switches from RPM to RCF display.
Entry of the RCF in increments of 1.
Entry of the rotor radius in mm in RCF mode.
- JRCF** The integral over the RCF indicates the overall RCF acting on the centrifuged material during the running time so far.
- n** Entry of the speed in increments of 10.
- t** Entry of the centrifugation time (max. 999 min : 59 sec).
- START** Starts centrifugation.
- STOP** Stops centrifugation manually.

Options

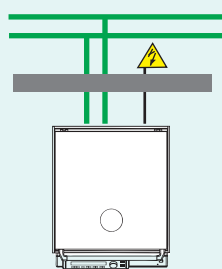
Cool solutions under any conditions

The ROTO SILENTA 630 RS adapts to the most diverse local conditions and requirements. Depending on fittings, it can be connected to

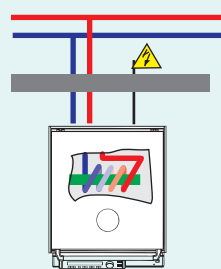
an external cooling unit



an external cooling medium circuit



an external coolant circuit, cooling unit integrated



green = cooling medium (R 404A), blue/red = coolant

Of course, a stand-alone model is also available: an air-cooled standard version supplied with an integrated cooling unit.

The housing of all versions can be insulated for use under clean-room conditions.

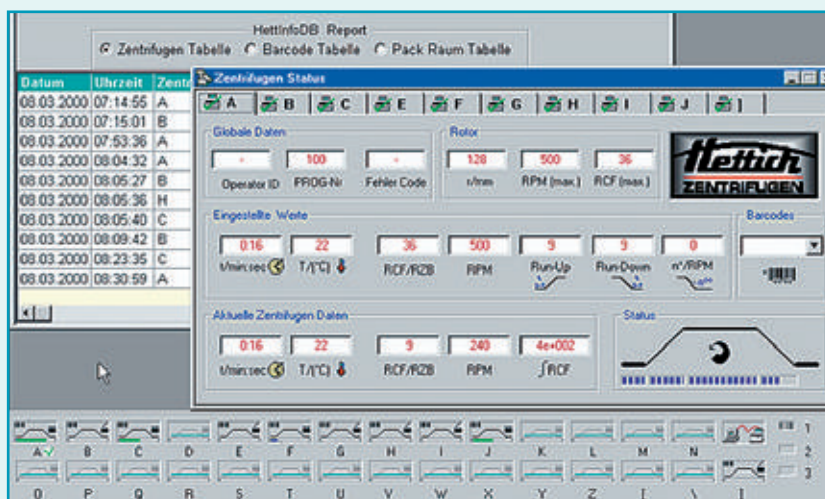
Additionally, the pedestal can be covered and sealed to the floor. External connections can also be mounted through the bottom of the centrifuge.

In addition to the above mentioned centrifuge models, we also manufacture special versions and accessories tailored to customer requirements.

Just talk to us about your special needs!

HettInfo – data documentation made easy

With the data report system HettInfo, up to 29 centrifuges can be controlled via one PC. A light conducting cable connects the centrifuge to a BUS system. A PC with a RS 232 interface records the selected data of the centrifuge.



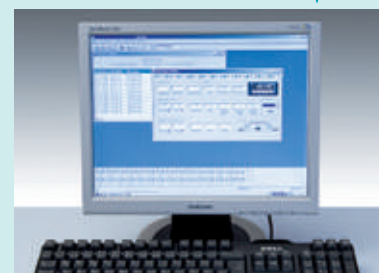
HettInfo registers all centrifugation data. Logging of the date, end of centrifugation, program number, temperature, bar codes and result is pre-set by default. Recording of all additional parameters can be selected or deselected by users themselves. Detailed information is available in our HettInfo brochure. Please ask for it.



Packing room with external bar code unit.



Scanning at the centrifuge.



Centrifugation programs and the operator code can also be scanned-in by bar code.

Data log

With just one rotor the ROTO SILENTA 630 RS accommodates blood bags, blood collection tubes, and bottles up to a volume of 2,000 ml. The versatile and user-friendly swing-out rotor No. 4176 attains a max. RCF of 6,498. Thanks to the powerful drive of the centrifuge, the efficient cooling system and the effective sound insulation, windshielding the rotor is not necessary. This does not only facilitate the handling, it also enables perfect temperature distribution and accurate temperature measurement.

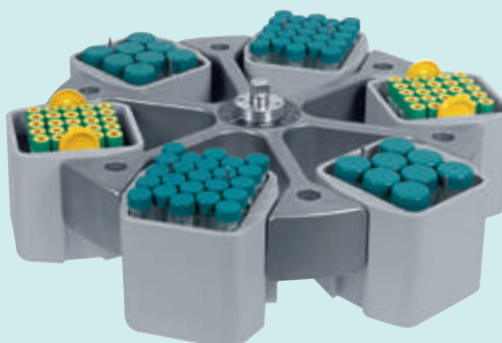
Swing-out rotor, 6-place, $\angle 90^\circ$



illustrated with
carriers 4591 and
inserts 4592-H
for max. 750 ml
blood bag systems
 $n = 4,500 \text{ min}^{-1}$,
max. RCF 6,498



illustrated with
carriers 4595 and
bottles 0550
for 2,000 ml
 $n = 4,500 \text{ min}^{-1}$,
max. RCF 6,362



illustrated with
carriers 4522 and
two each inserts
4245, 4232, and
4223
 $n = 4,500 \text{ min}^{-1}$,
max. RCF 5,999

Cat. No. (without carriers) 4176