

3B Scientific® Torsos

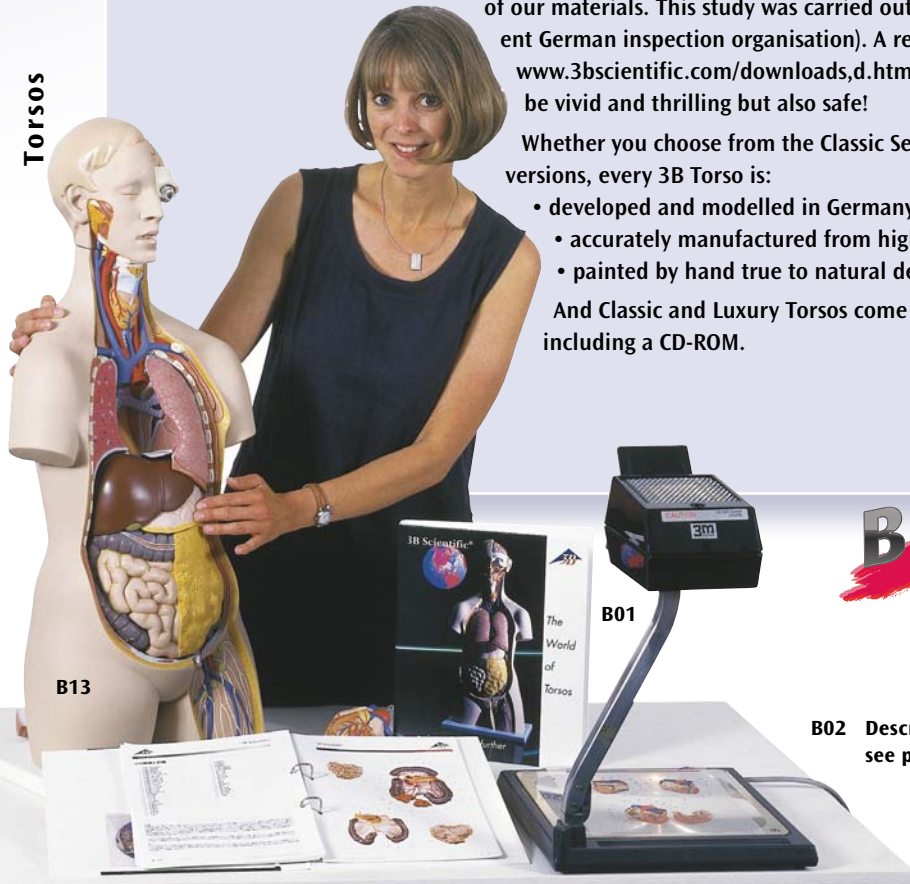
Torsos with musculature, life-size or smaller, for secondary education or for medical training: if top-quality human torso-models are important to you, then 3B Scientific is exactly the right choice for you! Our torsos are developed in close coordination with anatomy professors and doctors, and are made in Germany by highly specialised model-builders with high-quality, toxicologically harmless materials. Since this practice is unfortunately not the case with all manufacturers, consider your health and that of your students and patients and ensure that you are ordering anatomical models with harmless components by asking for an independent study guaranteeing the same.

We were the first manufacturer to order a long term study of one of our models (Torso B13) to be examined to verify the safety of our materials. This study was carried out by the TÜV (the nationally recognized independent German inspection organisation). A report of the results can be found on our webpage www.3bscientific.com/downloads,d.html. Because hands-on training tools should not only be vivid and thrilling but also safe!

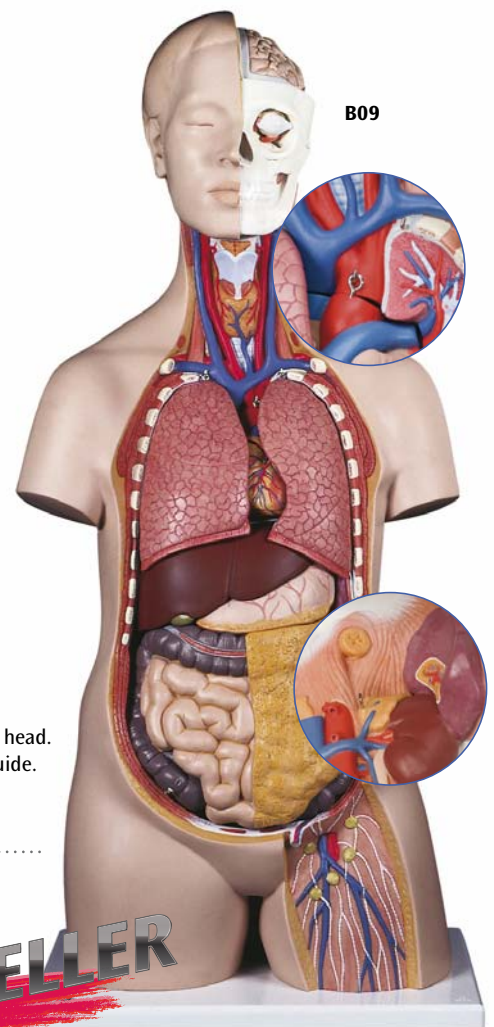
Whether you choose from the Classic Series, the Luxury Series or one of our special versions, every 3B Torso is:

- developed and modelled in Germany
- accurately manufactured from high-quality, harmless materials
- painted by hand true to natural detail

And Classic and Luxury Torsos come with our detailed 3B Scientific® Torso Guide including a CD-ROM.



BESTSELLER



Classic Unisex Torso, 14-part

This popular school torso is supplied with the following removable parts:

- 3-part head
- 2 lungs
- 2-part heart
- Stomach
- Liver with gall bladder
- 2-part intestinal tract
- Front half of kidney
- Front half of urinary bladder

Supplied with 3B Torso Guide.
87x38x25 cm; 5.9 kg

B13

Classic Unisex Torso, 11-part

(not shown)
Same as B13, but without head.
Supplied with 3B Torso Guide.
70x38x25 cm; 5.5 kg

B12

3B Torso Guide

- Brilliant coloured pictures of each part of the torsos
- Even the smallest structures are explained
- Valuable teaching tips to create more interesting lessons
- Complete with 7 different languages (Latin, English, German, Spanish, Portuguese, French, Japanese)
- Also on a CD-ROM in pdf format to assist in creating tests or preparing lessons
- Supplied complete in a coloured filing system.

B01

Classic Unisex Torso, 12-part

The following components of this torso are removable:

- 2-part head
 - 2-part removable heart
 - 2 lungs
 - Stomach
 - Liver with gall bladder
 - 2-part intestinal tract
 - Front half of kidney
- Supplied with 3B Torso Guide.
87x38x25 cm; 4.6 kg

B09

B02 Description
see page 47

BESTSELLER

Classic Unisex Torso, 16-part

This torso is especially popular among students. It shows the human anatomy in great detail and contains the following removable parts:

- 3-part head
- 2 lungs with sternum and rib attachments
- 2-part heart
- Stomach
- Liver with gall bladder
- 4-part intestinal tract
- Front half of kidney
- Front half of urinary bladder

Supplied with 3B Torso Guide (page 46).

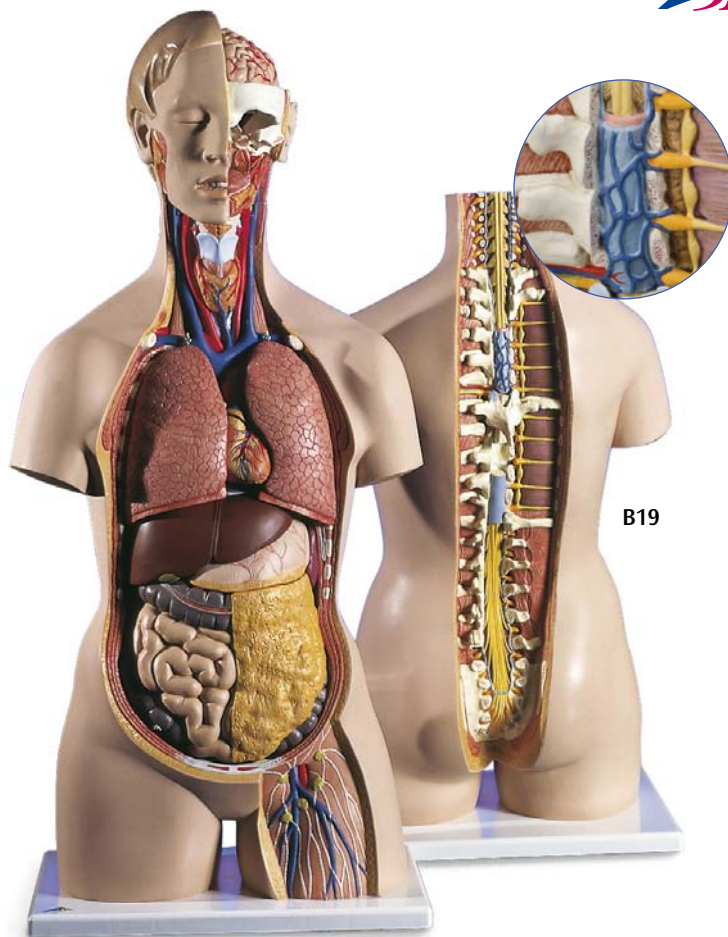
87x38x25 cm; 6.8 kg

B11

3B Torso Classroom Set

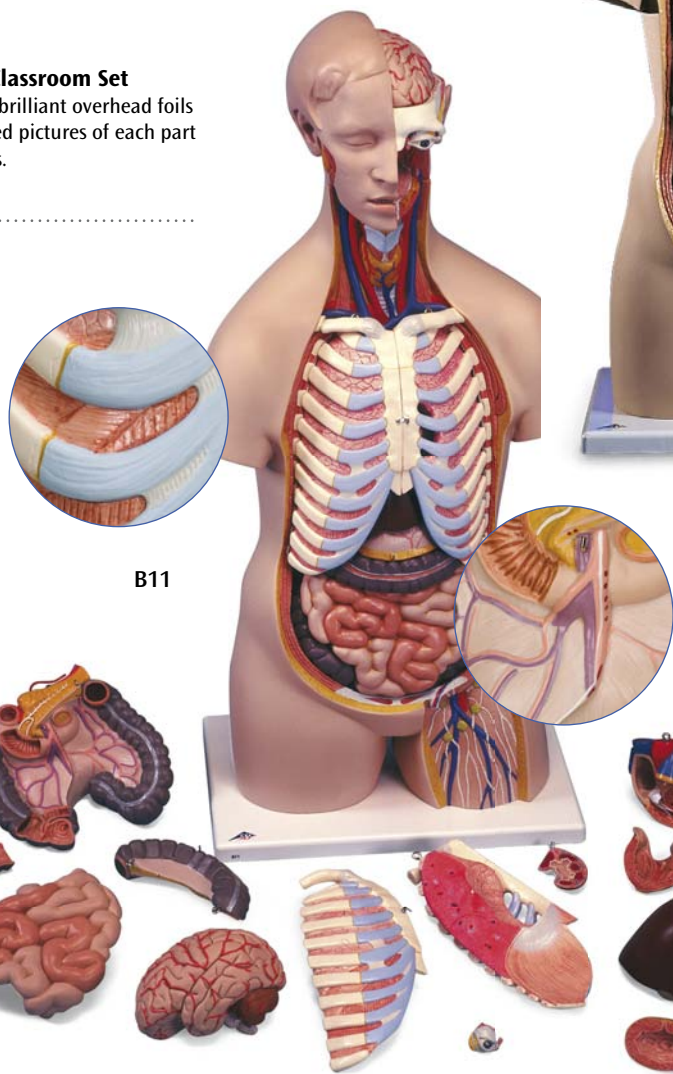
Includes 33 brilliant overhead foils with coloured pictures of each part of the torsos.

B02



B19

Torsos



B11

Classic Unisex Torso with Opened Neck and Back, 18-part

Based on our B13 torso, this model is characterised by its open neck and back section reaching from the cerebellum to the coccyx. Vertebrae, intervertebral discs, spinal cord, spinal nerves, vertebral arteries, and many other features are represented in detail and can be studied closely. It contains the following new features additionally to B13:

- 7th thoracic vertebra removable
- 6-part head

Supplied with 3B Torso Guide (page 46).

87x38x25 cm; 5.8 kg

B19

Overview: Classic-Torsos

Product Number	B09/1	B12	B09	B13	B11	B19	B17	B36	VA30	VA31
Parts	10	11	12	14	16	18	21	14	17	11
Open Back	–	–	–	–	–	yes	yes	–	yes	–
Head	–	–	2-part	3-part	3-part	6-part	6-part	3-part	2-part	1-part
Lungs	yes	yes	yes	yes	yes	yes	yes	yes	yes	yes
Rib Representation	–	–	–	–	yes	–	yes	–	–	–
Heart	2-part	2-part	2-part	2-part	2-part	2-part	2-part	2-part	2-part	2-part
Stomach	1-part	1-part	1-part	1-part	1-part	1-part	2-part	1-part	2-part	2-part
Liver/Gall Bladder	yes	yes	yes	yes	yes	yes	yes	yes	yes	yes
Intestinal Tract	2-part	2-part	2-part	2-part	4-part	2-part	4-part	1-part	1-part	1-part
Half Kidney	yes	yes	yes	yes	yes	yes	yes	yes	yes	yes
Half Urinary Bladder	–	yes	–	yes	yes	yes	yes	yes	yes	yes