



VF325

Urinary System, male, 3/4 times full size

- Inferior vena cava
- Renal veins
- Aorta with its branches
- Iliacal vessels
- Ureter
- Urinary bladder
- Prostate
- Adrenal gland
- Rectum
- Musculature

The right kidney is opened.
10x18x26 cm; 1.0 kg

L/D/E/F/S

VF325



K41

Prostate Model, 1/2 natural size

A cross section of the male genital organs shows a healthy prostate with bladder, urethra, testicle, symphysis and rectum. The narrowing of the urethra due to the change of the prostate is illustrated via the 4 cross sectional views. On base.

13.5x10x14 cm; 2.4 kg

L/E/D/S/F/P/I/J [www.](#)

K41



W42510

Free Standing Urinary System, male

Represented are:

- Kidneys (right kidney in longitudinal section)
- Adrenal glands
- Abdominal aorta and its branches
- Inferior vena cava with branches
- Iliacal vessels
- Ureter
- Upper half of bladder and prostate (removable into pubic bone and symphysis as well as lower half of bladder and prostate).

Delivered on wooden base.

51x33x20 cm

E

W42510



H12

Male Pelvis Section, 1/2 life size

This cross section of the male genital organs shows all structures in detail.

13.5x10x14 cm; 2.4 kg

L/D/E/F/S [www.](#)

H12

Dual Sex Urinary System, 6-part

- Structures of retroperitoneal cavity
- Large and small pelvis with bones and muscles
- Inferior vena cava
- Aorta with its branches including iliacal vessels
- Upper urinary tract
- Rectum
- Kidney with adrenal gland.

One front half of a kidney is removable. With easy to change male insert (bladder and prostate, front and rear half) and female insert (bladder, womb and ovaries, 2 lateral halves). Parts are numbered. On baseboard.

41x31x15 cm; 2.3 kg

L/E/D/S/F/P/I/J/R/C [www.](#)

K32



W10600



W10602



W10603

Model of Kidney Vessels

This corrosion cast contains a real pig's kidney embedded in crystal clear plastic. The size and macro structure of pig's kidneys resemble those of human kidneys. Detailed spatial portrayal of vessel arborisation and progression is very well illustrated with different nuances of colour: red for the arterial flow area, blue for the venous blood vessels and yellow for the pelvicalyceal system/ureter. Each of the specimens is unique and therefore varied in shape. 14.5x8.5x4 cm; ca. 0.5 kg

Red Yellow Blue

Red for the arterial flow area, blue for the venous blood vessels and yellow for the pelvicalyceal system/ureter.

W10600

Red-Yellow

Red for the arterial flow area and yellow for the pelvicalyceal system/ureter.

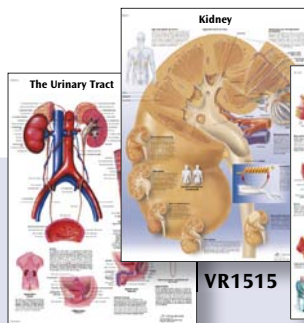
W10602

Red

With red arterial flow areas.

W10603

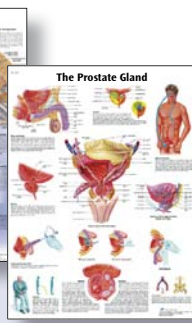
You will find our large selection of Charts starting on page 106



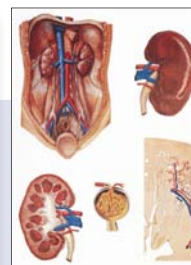
VR1514



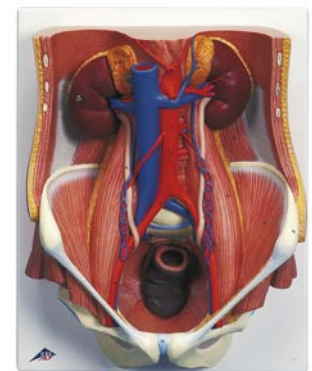
VR1515



VR1528



V2013



K32