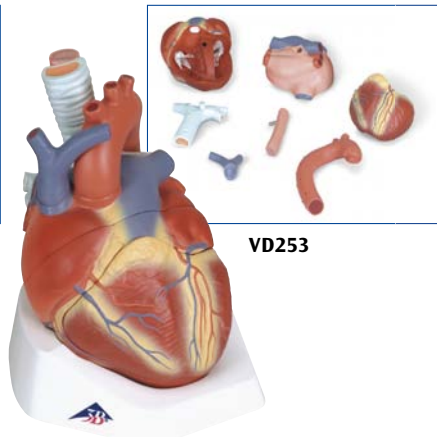


VD251



VD253



G01

Heart on Diaphragm, 3 times life-size, 10-part

This detailed heart depicts the structures of the diaphragm (= base). The following parts can be removed:

- Oesophagus
- Trachea
- Superior vena cava
- Aorta
- Pulmonary artery stem
- Both atrium walls
- Both ventricle walls

Supplied with a multilingual product manual.
41x33x28 cm; 3.6 kg
 L/E/D/S/F/P/I/J www.

VD251

Heart, 7-part

This model shows the anatomy of the human heart and is horizontally sectioned at the level of the valve plane. The following parts can be removed:

- Oesophagus
- Trachea
- Superior vena cava
- Aorta
- Front heart wall
- Upper half of the heart

On base. 20x15x17 cm; 1.1 kg
 L/D/E/F/S

VD253

Heart Model

The 5-part heart model is a didactically prepared original reproduction of a real human specimen. This model and an additional detailed representation of the cardiac valves during systole are presented on a stand.

- The parts of the model are fixed together with magnetic connections
- They can be taken apart very easily
- A true to original representation of all anatomical structures (e.g. papillary muscles and cardiac valves) in the atria and ventricles
- Detailed representation of the heart during systole: View of the base of heart with removed atria

25x21x13 cm; 1.52 kg
 L/E/D/S/F/P/I/J/C/R

G01



G08/3

Classic Heart with Conducting System, 2-part

Same features as G08, however, this transparent model also displays the complete conducting system, which is represented in colour. Delivered on removable stand.

19x12x12 cm; 0.2 kg

G08/3

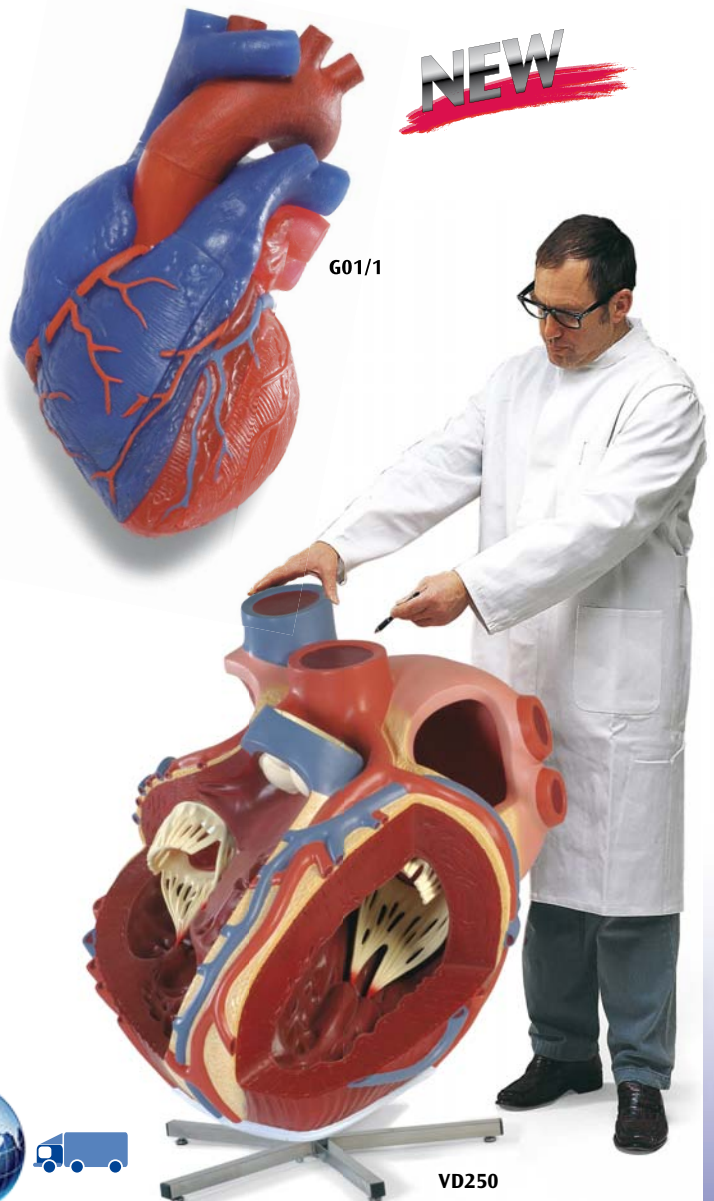
Heart Model

The 5-part heart model is a didactically prepared original reproduction of a real human specimen.

- The parts of the model are fixed together with magnetic connections
- They can be taken apart very easily
- A true to original representation of all anatomical structures (e.g. papillary muscles and cardiac valves) in the atria and ventricles.
- Colour scheme and disassembly of the heart model in a didactical manner. The chambers of the heart and vessels (including coronary vessels) in which oxygen rich blood is transported have been displayed in red. Heart chambers and vessels which contain blood low in oxygen have been reproduced in blue.

13x19 cm; 0.6 kg
 L/E/D/S/F/P/I/J/C/R

G01/1



G01/1

NEW

VD250

Giant Heart, 8 times life size

See every detail of the heart with this giant 8 times life size model. Painstakingly constructed by hand, this heart will be the centre of attention at any exhibition and it is especially suitable for lecture halls. The atria and ventricles are open to give a view of the interior, and show the accurately modelled bicuspid and major vessels adjacent to the heart coronary heart vessels, are also accurately. On stand.

100x90x70 cm; 35.0 kg
 L/E/D/S/F/P/I/J www.

VD250

Connect With Us

