

BESTSELLER

Skulls



A290



A291



3B Scientific® Beauchene Skull, 22-part, Didactic Coloured Version

This high quality natural cast made of durable, dimensionally stable plastic reveals the complex structure of the human skull in an exceptionally clear way. The 22 individual bones can be firmly and precisely assembled at the well defined skull sutures using robust inconspicuous connectors. This means that the skull can be handled without falling apart, which differentiates it from alternative wobbly models with magnetic connectors. The perfectly interlocked sutures illustrate the adhesion of a genuine human skull very realistically. The bones are didactically dyed in nine lasting colours for ease of identifying the various skull sections. Pairs of bone plates are the same colour.

The skull consists of the following individual bones:

- Parietal bone (left and right)
- Occipital bone
- Frontal bone
- Temporal bone (left and right)
- Sphenoid bone
- Ethmoid bone
- Vomer bone
- Zygomatic bone (left and right)
- Upper jaw (maxilla) with teeth (left and right)
- Palatine bone (left and right)
- Nasal concha (left and right)
- Lacrimal bone (left and right)
- Nasal bone (left and right)
- Lower jaw (mandible) with teeth

This popular model is produced using accurate casts of the individual bones of a genuine “exploded” skull of European origin and is ideally suited for training osteopaths as well as other professionals.

21x14x16 cm; 0.7 kg
 E/D/S/F/P/I/J www.somatco.com

A291

3B Scientific® Skull Kit – Anatomical Version, 22-part
 as A291, but not coloured

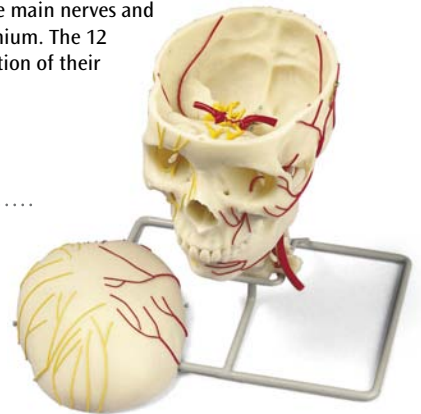
A290

Neurovascular Skull

A life-size adult skull with seven cervical vertebrae mounted upon a stand. The arteries are shown on one side and nerves on the other. Removing the vault exposes the main nerves and arteries on the floor of the cranium. The 12 cranial nerves and the distribution of their branches is also shown.

29x21x18.5 cm; 1.3 kg
 E

W19018



W19018

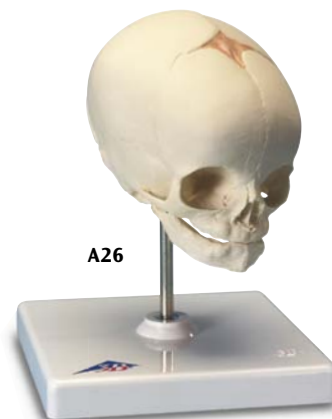
Foetal Skull, on Stand

Cast of a natural bone foetal head in the 30th week of pregnancy.

A26

Foetal Skull (not shown)
 as A26, but without stand
 14x9x9 cm; 0.15 kg

A25



A26

Mini Skull, 3-part (not shown)

Our mini skull, which precisely depicts all the anatomical structures, can be disassembled into skullcap, base of skull and mandible.

A18/15

Connect With Us



Anatomy

