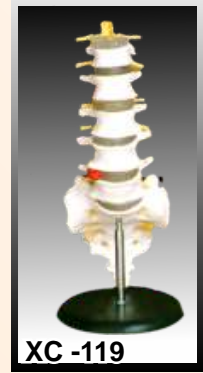




XC - 119 LUMBAR VERTEBRAE WITH SACRUM & COCCYX AND HERNIATED DISC LIFE SIZE



XC - 127 BIRTH DEMONSTRATION MODEL

This model consists of 2 innominate bones, sacrum, coccyx, with fetal skull which is firmly connected with the model by means of a flexible metal tube which can be fixed in every position. It facilitates the students to get an integral knowledge of normal labor of a pregnant women.



XC - 133 CERVICAL VERTEBRAL COLUMN WITH NECK ARTERY

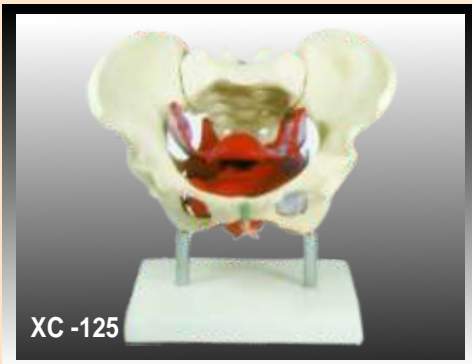
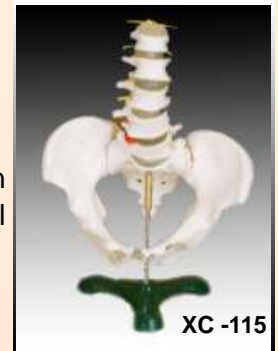
This model shows Cervical Vertebral Column with neck artery and nerve roots.

XC - 118 LUMBAR SET (4PCS)

Life-size lumbar vertebrae are shown with normal intervertebral disc and spinal cord with nerve roots. Mounted on a sturdy metal rod.

XC - 115 PELVIS WITH 5pcs LUMBAR VERTEBRAE

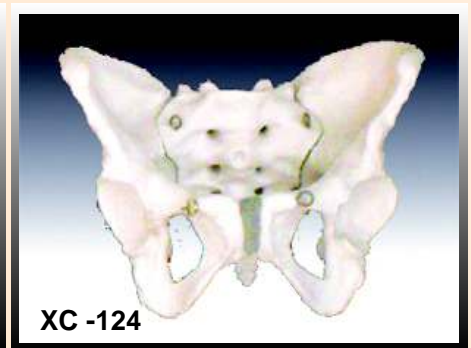
Life -size Lumbar Vertebrae are shown with normal intervertebral disc, spinal chord and pelvis.



XC - 125 FEMALE PELVIC MUSCLES & ORGANS
This model is designed as an aid to the teaching of anatomy of female pelvis in institutes. It facilitates the students to get an integral knowledge of various important structures, such as pelvic muscles and pelvic organs as a whole. This model is made of PVC plastic. Natural size.



XC - 123 ADULT MALE PELVIS



XC - 124 ADULT FEMALE PELVIC

These model size are just the same as in realities and made of PVC plastic. Comparing a model of male pelvis with a female one, the differences between the two can be listed as followings:-

	Male	Female
Pelvis shapes	: Longs and narrow	Short and broad
Pelvis cava	: Like a funnel	Like a barrel
Aperture pelvis superiors	: Heart-like	Rounded
Sacrum	: Long and narrow	Broad and short
Angles of pelvis arch	: 70-75 degree	90-100 degree
Symphysis pubica	: Long and narrow	Short and broad