

Brain, 4-part

This brain is medially divided. All structures are hand-painted, numbered and identified in a product manual. The right half can be disassembled into:

- Frontal with parietal lobes
- Brain stem with temporal and occipital lobes
- Half of cerebellum

On removable base.
14x14x17.5 cm; 0.9 kg

L/D/E/F/S/P/I/J [www.](http://www.3b.com)

C16



BESTSELLER
Brain

Brain, 8-part

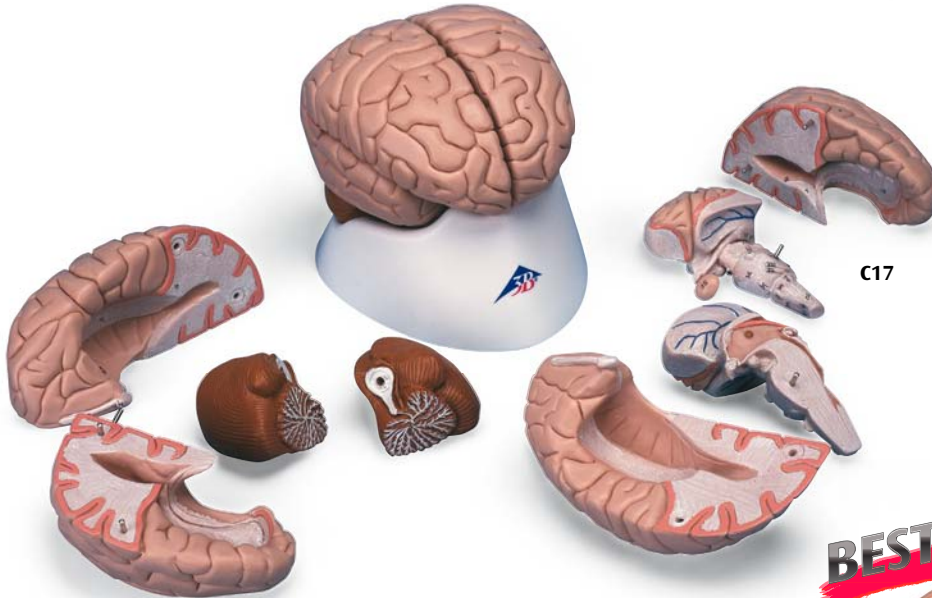
A very detailed model of the human brain which is medially divided. Both halves can be disassembled into:

- Frontal with parietal lobes
- Temporal with occipital lobes
- Half of brain stem
- Half of cerebellum

On removable base.
14x14x17.5 cm; 0.9 kg

L/D/E/F/S/P/I/J [www.](http://www.3b.com)

C17



Brain, 2-part

A medially divided brain, perfect for beginning studies because of its affordable price. Delivered on removable base.

15x14x17.5 cm; 0.7 kg

L/D/E/F/S/P/I/J [www.](http://www.3b.com)

C15

Introductory Brain, 2-part

This brain is medially divided, structures are shown in one colour. On removable base.

15x14x17.5 cm; 0.7 kg

C15/1

BESTSELLER



C18

C18 disassembled

Classic Brain, 5-part

This midsagittally sectioned model is an original anatomic cast of a real human brain. The components of its left half are:

- Frontal and parietal lobe
- Temporal and occipital lobe
- Encephalic trunk
- Cerebellum

Matches skull models A20, A20/N, A20/T, A21, A22, A22/1, A23, A24. On removable base.

13x14x17.5 cm; 0.49 kg

L/D/E/F/S/P/I/J [www.](http://www.3b.com)

C18