

C20

Brain with Arteries, 9-part
 This medially divided deluxe brain model shows the brain arteries as well as the removable basilar artery. Both halves can be disassembled into:

- Frontal with parietal lobes
- Temporal with occipital lobes
- Half of brain stem
- Half of cerebellum

On removable base.
 15x14x16 cm; 0.9 kg
 L/D/E/F/S/P/I/J [www.](http://www.3b.com)

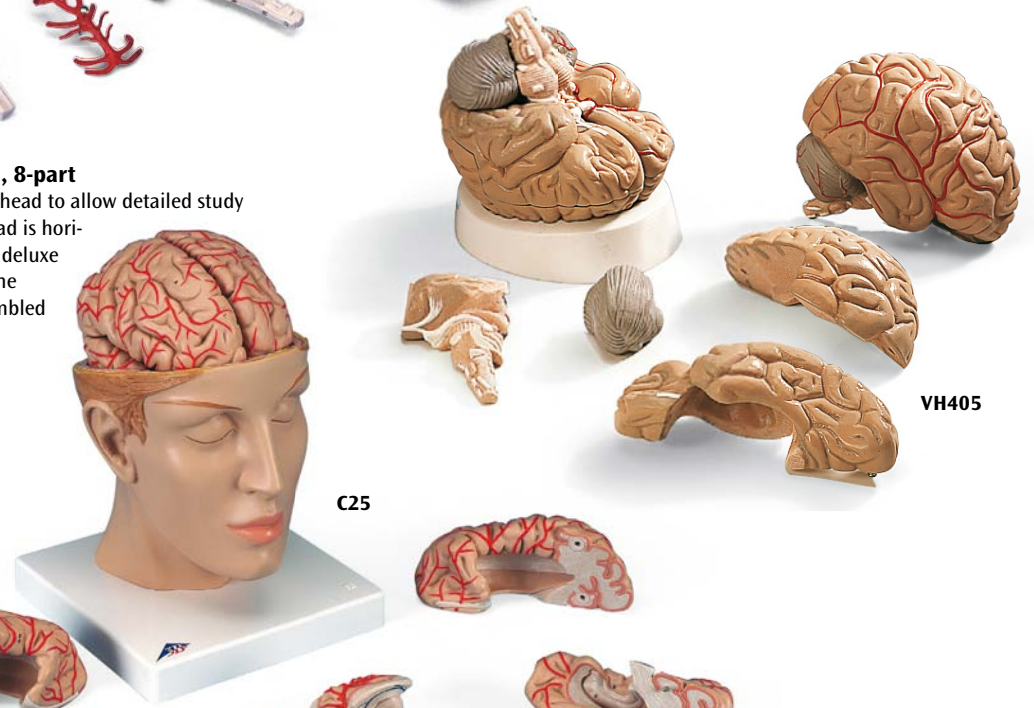
C20

Brain with Arteries on Base of Head, 8-part
 This C20 deluxe brain comes with opened head to allow detailed study of the brain's position in the skull. The head is horizontally divided above the skull base. The deluxe brain model is medially opened to show the brain arteries. Both halves can be disassembled into:

- Frontal with parietal lobes
- Temporal with occipital lobes
- Brain stem
- Cerebellum

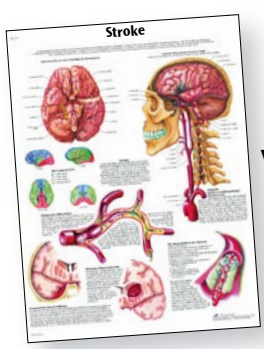
On base.
 15x15x23 cm; 1.6 kg
 L/D/E/F/S/P/I/J [www.](http://www.3b.com)

C25



C25

VH405



VR1627

Brain with Arteries, 5-part
 Medially divided with the right half showing arteries. The left half can be disassembled into:

- Frontal with parietal lobes
- Temporal with occipital lobes
- Half of brain stem
- Half of cerebellum

On removable stand.
 15.5x13x15 cm; 1.0 kg
 L/D/E/F/S

VH405

Neuro-Anatomical Brain, 8-part
 This deluxe brain is medially divided. On the right half, you will find a coloured, systematic grouping and representation of the cerebral lobe. The left half shows:

- Pre and post-central region
- Broca and Wernicke areas
- Heschl's gyrus
- Brain nerves
- Ventricles

Both halves can be disassembled into:

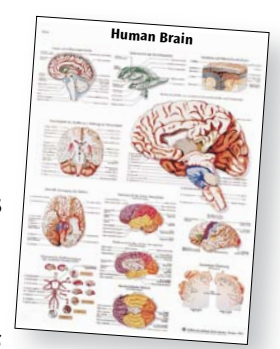
- Frontal with parietal lobes
- Temporal with occipital lobes
- Half of brain stem
- Half of cerebellum

On removable base.
 14x14x17.5 cm; 0.95 kg
 L/D/E/F

C22



C22



VR1615

Charts starting on page 106.