

Dental Disease, magnified 2 times, 21 parts

With 16 removable adult teeth magnified two times. One half of the model shows eight healthy teeth and healthy gums. The other half of the model shows the following dental diseases:

- Dental plaque
- Dental calculus (tartar)
- Periodontitis
- Inflammation of the root
- Fissure, approximal and smooth surface caries.

One part of the front bone section can be removed to view the roots, vessels and nerves. Two molars are sectioned along the length to show the inside of the tooth.

Delivered on a base. 25.5 x 18.5 x 18cm; 0.6 kg

E/D/F/S/P/I/J www.3b.com

D26



Teeth

D26

Giant Dental Care Model, 3 times life-size

This model, large enough to be seen from the back of a classroom, shows the upper and lower half of an adult's dentition. A flexible joint between the jaws allows easy movement. Teach children proper cleaning techniques using the giant toothbrush included with this model.

18x23x12 cm; 1.5 kg

Replacement parts for D16

Giant Toothbrush
36.5 cm

XD002



D16

D16



W42517
W42528
W42529



VE300

VE299

VE298

D15

Upper Triple-Root Molar with Caries, 2-part

Longitudinal section of tooth crown and root to show pulp and the onset of caries. On removable base.

23 cm; 1.1 kg

L/D/F/S/P/E/I/J/R/C www.3b.com

VE298

Giant Molar with Dental Caries, 15 times life-size, 6-part

This model depicts an upper triple-root molar and separates into 6 parts. It features a longitudinal section through the crown, two roots and the pulp cavity. Contains removable pulp and three tooth inserts with different stages of advanced caries. On stand.

24 cm; 1.5 kg

L/D/E/F

D15

Dental Morphology Series, 7-part, 10 times life-size

Removable lateral incisor, canine, first premolar, bridge made of artificial first molar with gold coloured crown, and second molar. All relevant structures are labelled. On transparent, jaw-shaped stand.

70x25.5x15 cm; 2.1 kg

Upper Incisor, 2-part

Complete horizontal section cut in order to show pulp. On removable base.

23 cm; 0.9 kg

L/D/E/F/S/P/I/J/R/C www.3b.com

VE300

Upper Twin-Root Molar with Caries, 2-part

Half of tooth crown removable to show pulp and the onset of caries. On removable base.

23 cm; 0.9 kg

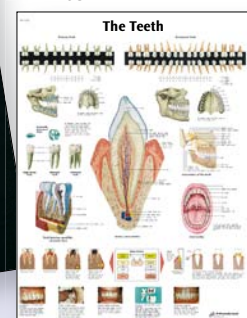
L/D/E/F/S/P/I/J/R/C www.3b.com

VE299



VE2016

VR1263



You will find our large selection of Charts starting on page 106.

Connect With Us

