

## MAGNUM EFL



### **MAGNUM for epi-fluorescence.**

Trinocular microscope with epi-fluorescence illumination - HBO 100W.

#### **Product reference. 2747.2000**

Specifications identical to standard Magnum with the following differences:

**Optical head:** trinocular, including vertical photo/video port (Ø30mm)

**Objectives:** Infinity planachromatic (CCS Optics)

**Fluorescent attachment:** - centrable through a centring device

- Focusable with rack and pinion height adjustment system
- A fluorescent filter turnplate with 5 positions:

#### **Filters:**

- UV (ultraviolet) excitation filter 330-400 nm, barrier filter 425nm
- V (violet) excitation filter 395-415 nm, barrier filter 455nm
- B (blue) excitation filter 420-485 nm, barrier filter 520nm
- G (green) excitation filter 460-550 nm, barrier filter 580nm

**Illumination:** Brightfield 6V/30W (variable)

**Reflected:** High pressure Mercury bulb - HBO 100W

Supplied with: external lamphouse and power supply (for fluorescent attachment) with connecting cable and Anti-UV protection screen.

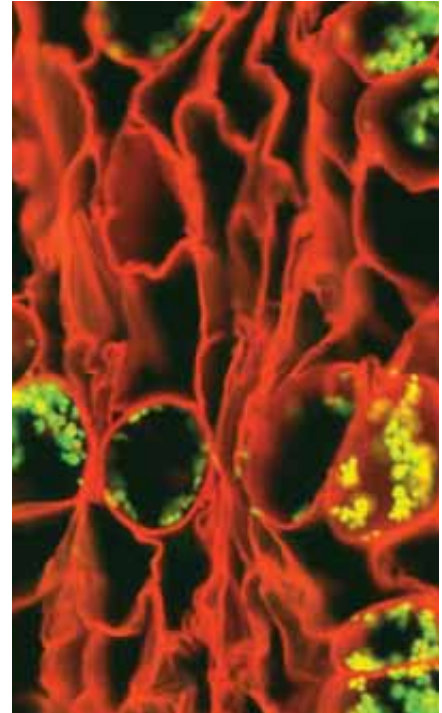
#### **Optional accessories:**

- Polarising Set
- Phase Contrast Sets
- Darkfield Condensers
- Digital & CCD cameras

**External lamphouse for high pressure mercury bulb HBO-100W.**

**External power supply delivered with power cable and connecting cable.**

**Supplied with fluorescence free oil (10 ml) and blocking plate for stage.**



### **Fluorescence LED Module & Microscope.**

#### **Product reference. 2766.0000**

Standard specifications to 2747.2000 with the following differences:

- Clamp-on LED source adapter
- High efficiency back-light illuminator
- 3 position emission filter holder
- Excitation wavelengths from UV to Red (Blue and Green included)
- One wavelength per LED cassette
- 50,000+ hours of LED light source life
- Very high S/N ratio for all wavelengths
- 7.5V DC low voltage operation

#### **Optional accessories:**

- Battery pack option for field work
- 6 position filter holder

