



C40/1

C40/2

C40/3

C40

C40/5

C40/4



C41

Spinal Cord with Nerve Endings

The model illustrates the composition of the spinal cord, magnified to a scale of about 5:1. The spinal cord is formed by a central channel surrounded by “grey matter” with an outer layer of “white matter”. The base features illustrations of various cross sections through the white and grey matter at the neck, torso, lumbar and sacral regions. Supplied on a base. 26x19x13 cm, 0.4 kg

L/D/E/S/F/P/I/J [www.](#)

C41

Motor Neuron Diorama

Magnified more than 2,500 times, this model represents a fully three dimensional reproduction of a motor nerve cell situated within a milieu of interacting neurons and a skeletal muscle fibre. The membranous envelope has been cut away from the neuron to expose the cytological ultrastructure, organelles and inclusions within the cell body. Branching dendrites, communicating synapses and a myelin wrapped axon with node of Ranvier, project from the neuronal surface. A section of the axon lifts off to let you view the tightly wound layers of the enveloping myelin sheath and neurolemma, as well as the Schwann cell which formed them. Mounted on a wooden base.

43x20x28 cm; 3.0 kg

E

W42537

“Physiology of Nerves” Series, 5 Magnetic Models on Illustrated Metal Board

Displaying the basic structures of the human nervous system. Each of the five sections shows a plastic coloured relief model of the main synapse variations. All sections can magnetically attach to the illustrated base which depicts the neural components in vivid colours. Each section is also available separately.

68x51x10 cm; 4.2 kg

E/D/S/F/P [www.](#)

C40

Neuron Cell Body

Typical neuron body with cell organelles, for example mitochondria and many other characteristics of human cell, are visible through a removable transparent cover. The edge of the cell body also shows the synapses of connected neurons.

12.2x11.7x6.2 cm; 0.2 kg

C40/1

Myelin Sheaths of the CNS

This model shows the glial cells which build the insulating layer around the axons of the central nervous system.

12.2x11.7x3.6 cm; 0.2 kg

C40/2

Schwann Cells of the PNS

Depicts a Schwann cell with sectioned core.

12.2x11.7x3.2 cm; 0.2 kg

C40/3

Motor End Plate

Neuromuscular junction with striated muscle fibre is depicted.

12.0x11.5x3.2 cm; 0.2 kg

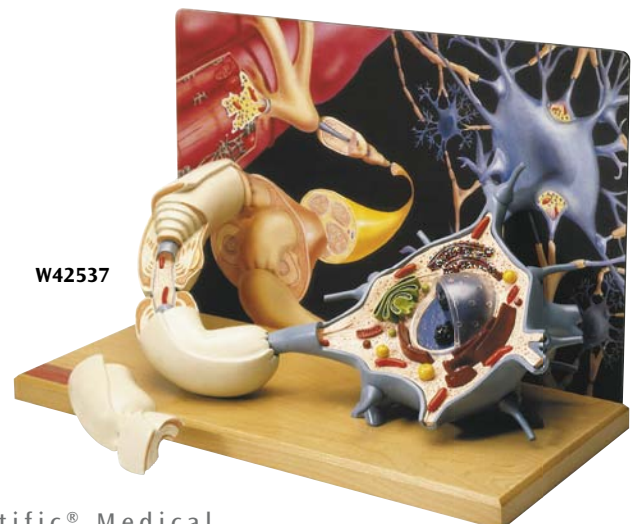
C40/4

Synapse

Featuring the endoplasmic reticulum, mitochondria and the membranes of the synaptic gap. Also depicts 5 smaller relief models of the main synapse variations.

12.0x11.5x2.7 cm; 0.2 kg

C40/5



W42537