

E20

Nose with Paranasal Sinuses, 5-part

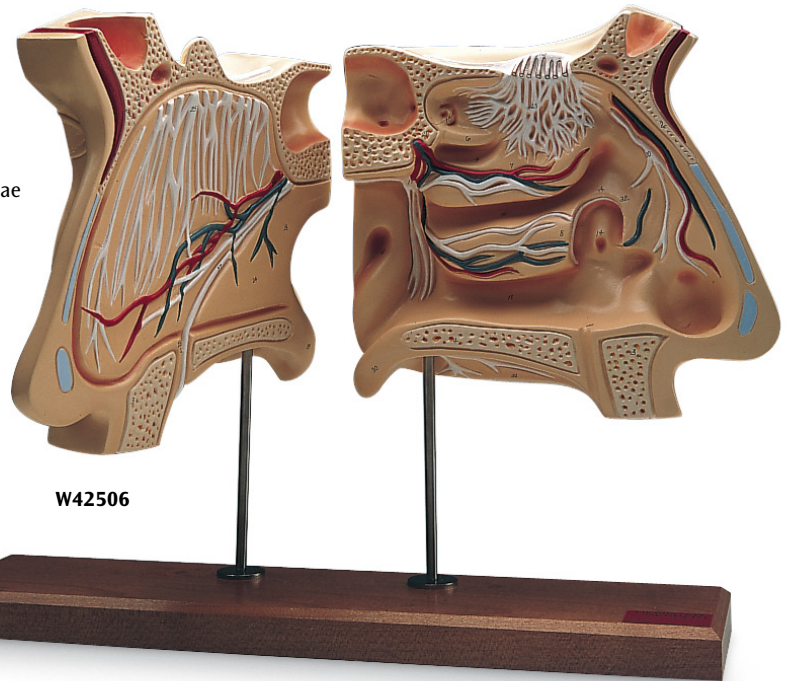
This model illustrates the structure of the nose with the paranasal sinuses in the upper right half of a face in 1.5 times enlargement. The following structures can be seen from the outside, differentiated by colour (also visible through the removable transparent skin):

- The outer nasal cartilages
 - The nasal, maxillary, frontal and sphenoidal sinuses
 - The opened maxillary sinus when the zygomatic arch is removed
- The following structures are shown in a median section:

- The nasal cavity, lined with mucosa, with the nasal conchae (removable)
- The arteries of the mucous membrane
- The olfactory nerves
- The innervation of the lateral wall of the nasal cavity, the nasal conchae and the roof of mouth (palate)

L/D/E/F/S/P/I/J [www.](http://www.3bscientific.com)

E20



W42506

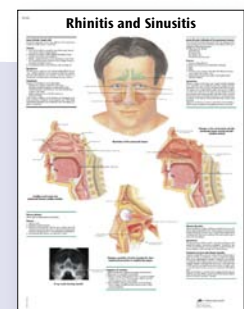
Nose and Olfactory Organ, 4 times full-size

The nose halves are medially divided, from the base of the skull to the gum. This model shows the nasal septum with vessels and nerves (right side), all structures of the inner nasal cavity (left side), sinus and the opening of the Eustachian tube (left side). Parts are numbered and described on the outside. On a rotating base.

41x25.5x18 cm; 3.0 kg

E

W42506



VR1251

You will find our large selection of Charts starting on page 106.