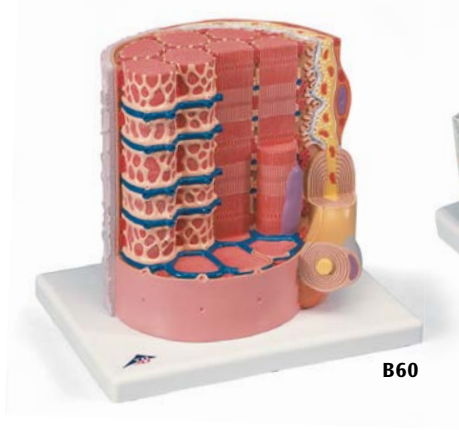
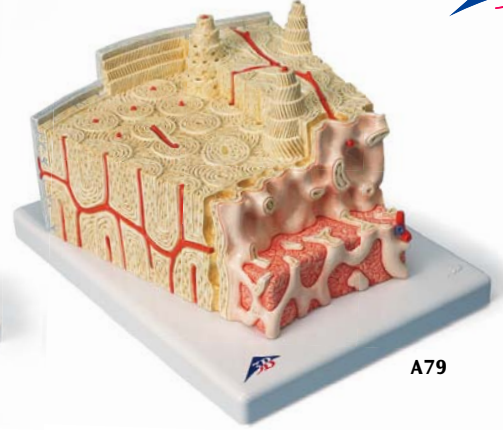




K13



B60



A79

### 3B MICROanatomy™ Kidney

This extremely detailed model shows the morphologic / functional units of the kidney greatly magnified. Six model zones illustrate the following fine-tissue structures that serve the production of urine:

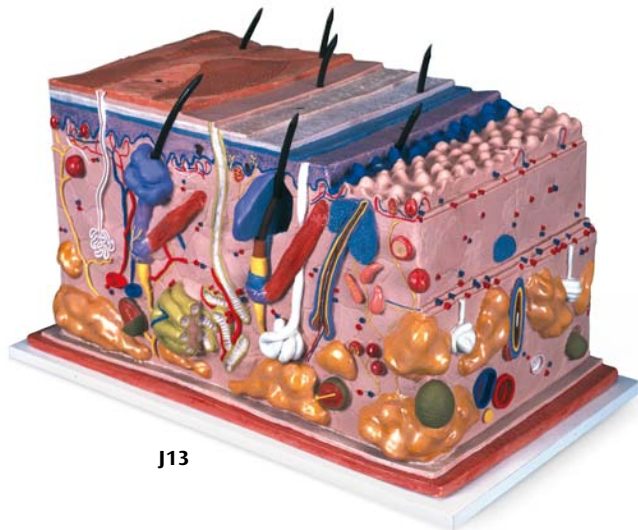
- Longitudinal section of a kidney
- Section of renal cortex and renal medulla
- Wedge-shaped section of a kidney lobe with a diagrammatic depiction of three nephrons with Henle's loops of different lengths and diagrammatic depiction of the vascular supply
- Diagrammatic illustration of a nephron with a short Henle's loop and didactic / diagrammatic illustration of the vascular supply
- Diagrammatic illustration of an opened renal corpuscle with nephron and light-microscopic transverse sections of the proximal, attenuated and distal segments of a renal tubule
- Diagrammatic / didactic illustration of an opened renal corpuscle

Mounted on a base.

23.5x25.5x19 cm; 1.3 kg

L/E/D/S/F/P/I/J [www.](http://www.3b.com)

K13



J13

### Skin, Block Model, 70 times full-size

This unique model shows a section of human skin in three dimensional form. Individual skin layers are differentiated, and important structures such as hair, sebaceous and sweat glands, receptors, nerves and vessels are shown in detail. Mounted on baseboard.

44x24x23 cm; 3.6 kg

L/E/D/S/F/P/J [www.](http://www.3b.com)

J13



J10

### 3B MICROanatomy™ Bone Structure

This extremely detailed model depicts a three-dimensional section of a lamellar bone, showing the typical structure of a tubular bone enlarged 80 times. Various planes are shown in cross and longitudinal section through all levels of the bone, as well as a 2-plane section through the inner structure of the bone marrow. The typical elements of a lamellar bone are easily identified and help to understand its structure and function with the characteristic osteons, also referred to as Haversian systems. This model allows a graphic illustration of the interplay of the individual components, such as spongy and compact substance, endosteum, cortical substance, osteocytes, Volkmann and Haversian canals.

Supplied on base.

26x19x14.5 cm; 0.8 kg

E/D/S/F/P/J [www.](http://www.3b.com)

A79

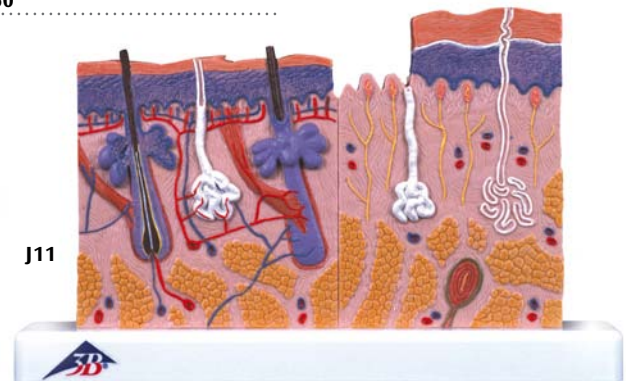
### 3B MICROanatomy™ Muscle Fibre

The model illustrates a section of a skeletal muscle fibre and its neuromuscular end plate magnified approx. 10.000 times. The muscle fibre is the basic element of the diagonally striped skeletal muscle.

23.5x26x18.5 cm; 1.1 kg

L/E/D/S/F/P/I/J

B60



J11

### Skin Section, 70 times full-size

This relief model shows a section through the three layers of the hair-covered skin of the head. Delivered on base it shows:

- Representation of hair follicles with sebaceous glands
- Sweat glands
- Receptors
- Nerves
- Vessels

26x33x5 cm; 1.0 kg

L/E/D/S/F/P/J [www.](http://www.3b.com)

J10

### Skin Section, 40 times full-size

The two halves of this relief model show the three layers of hairy and hairless skin in order to make the differences clear. In detail with hair follicles, sebaceous glands, sweat glands, receptor, nerves and vessels. Delivered on base.

24x15x3.5 cm; 0.2 kg

L/E/D/S/F/P/J [www.](http://www.3b.com)

J11