

## Fetal Ultrasound Biometrics Phantom



Model 068

### Instruct and develop ultrasound examination techniques

The CIRS Model 068 Fetal Ultrasound Biometrics Phantom facilitates teaching and demonstration of fetal ultrasound examination techniques in a non-stressful situation. A tissue equivalent full fetal model is suspended in a non-echoic, amniotic fluid like environment.

#### THE MODEL INCLUDES:

- Complete external fetal anatomy and surrounding non-echoic medium
- Asymmetric head with upper portion of the skull
- Right and left brain lobes
- Lateral and third ventricles
- Right and left femoral shafts with distal epiphysis

Transabdominal measurements of biparietal diameter (BPD), anterior/posterior diameter (APD), femur length, abdominal circumference and crown to rump length can be taken. Because the phantom is housed in a rotatable cylinder, a variety of fetal / transducer orientations can be achieved for more challenging examinations. All anatomies are based on published biometric data at normal fetal growth rates for a gestational age of 21 weeks. This enables assessment of composite measurement techniques and biometric analysis programs common to most ultrasound scanners. The phantom can also be used for 3D reconstructions, surface rendering and a variety of other applications.



Reference markers ensure repeatable measurements of AC and BPD.



Longitudinal measurements of femur length



Cross section measuring BPD.

#### Connect With Us



## Vascular Access Training Phantom Kit

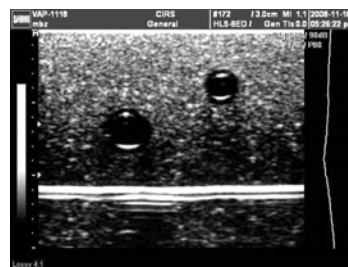


Model 072

### Demonstrate • Train • Experiment

The Model 072 Vascular Access Training Phantom Kit is designed to provide realistic training medium for needle insertion. The phantom is made from a durable elastomeric compound mimicking the tactile feel and puncture resistance of soft tissue. This material has realistic acoustic properties allowing imaging of the simulated vessels under ultrasound. The phantom includes one bifurcated vessel and 2 straight vessels at a variety of depths and diameters to simulate a range of challenges often encountered in the clinical environment.

The phantom can be easily replenished using a syringe and will not dry out. The phantom is supplied with a start up accessory kit.



Cross section of the vessels

## Thyroid Ultrasound Training Phantom Kit



Model 074

### Teach • Train • Practice

Thyroid nodules occur in 50% of the world's population with incidence increasing with age. Ultrasound guided biopsies of the thyroid yield more accurate results than free-hand techniques.

The CIRS Thyroid Training Phantom is a disposable training tool and practice medium for ultrasound guided thyroid biopsy procedures. The phantom also serves as an excellent teaching tool for identification of various types of thyroid nodules and training on proper thyroid scanning techniques.

The phantom can be punctured numerous times, will not leak and requires no special storage. The Thyroid Training Phantom creates a relaxed learning environment in which to develop skills.

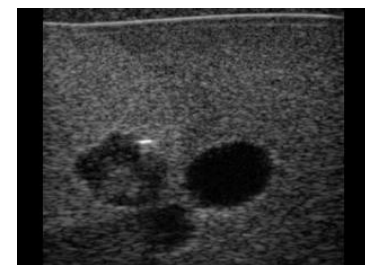


Image of thyroid containing complex nodule with calcifications