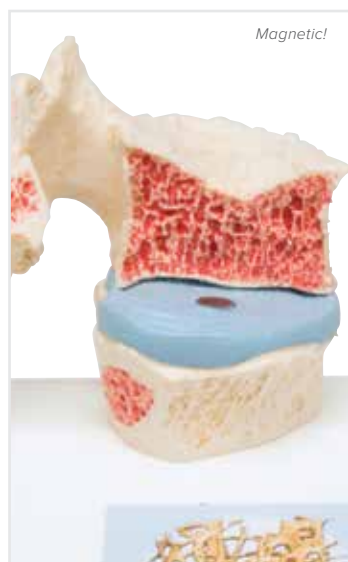
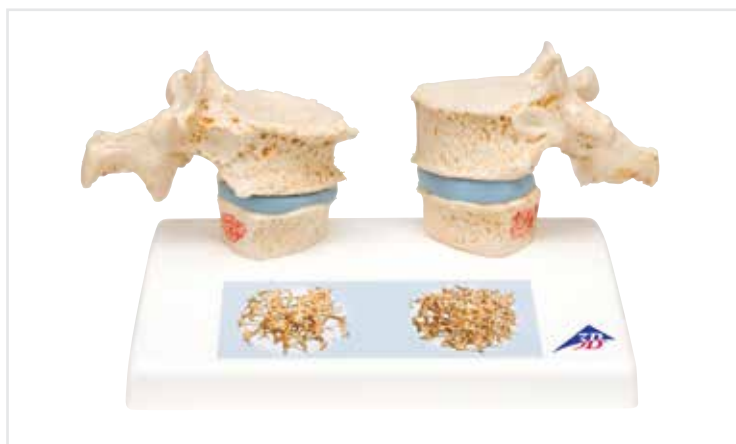


Spinal Cord with Nerve Endings

The construction of the spinal cord is shown through accurate representations of grey and white matter, fissures, nerve roots, the spinal ganglia, the spinal nerve with its four branches, and the three layers of the spinal column. The model is mounted on a base which has illustrations comparing cross sections from the cervical, thoracic, lumbar and sacral regions of the spinal column. The regions illustrated on the pedestal are colour coded, numbered and explained in an accompanying product manual. 26 x 19 x 13 cm; 0,4 kg

M-1000238

5 times life-size!



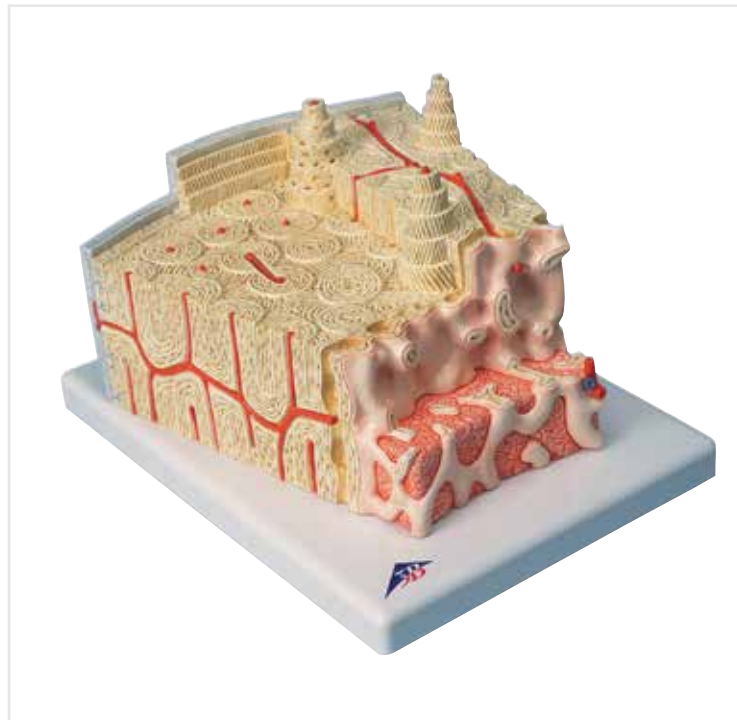
Magnetic!

Osteoporosis Model

Impressive didactic model for comparing osteoporotic and normal thoracic vertebrae. Ideal for medical studies and patient consultation. Reproductions of osteoporotic thoracic vertebrae with narrower intervertebral disc are located on the left of the stand. Two corresponding healthy vertebrae with intervertebral disc are provided on the right side. The upper vertebra is divided in the middle. The magnetically attached vertebral half can be removed easily to show the cut surfaces. A detailed illustration on the base depicts two 3D micro CT images obtained from bone biopsies.

M-1000182

سوماتکو
SOMATCO
www.somatco.com



MICROanatomy™ Bone Structure Model, enlarged 80 times

This model depicts a section of lamellar bone, showing the typical structure of tubular bone. Planes are shown in cross and longitudinal section through all levels of the bone and bone marrow. Typical elements are easily identified and help in understanding the structure and function of the Haversian systems. This representation graphically illustrates the individual bone components including spongy and compact substance, endosteum, cortical substance, osteocytes, Volkmann and Haversian canals. 26 x 19 x 14,5 cm; 0,8 kg

M-1000154



Lumbar Spinal Column with Prolapsed Intervertebral Disc

Natural casts of L4 and L5 lumbar vertebrae with paired spinal nerves, spinal cord and two interchangeable intervertebral discs. The discs illustrate either central or dorso-lateral prolapse. Dissects into 5 parts. On stand, removable. 26 x 19 x 14,5 cm; 0,27 kg

M-1000149

A. Three Lumbar Vertebrae, flexibly mounted

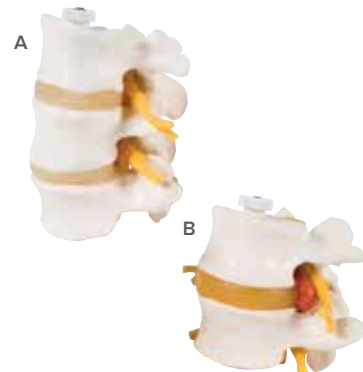
Anatomically correct to the last detail. Flexibly mounted with spinal nerves and spinal cord. 11 cm; 0,15 kg

M-1000151

B. Two Lumbar Vertebrae with Prolapsed Disc

Flexibly mounted with spinal nerves and spinal cord. 9 x 11 x 9 cm; 0,15 kg

M-1000152



Connect With Us

