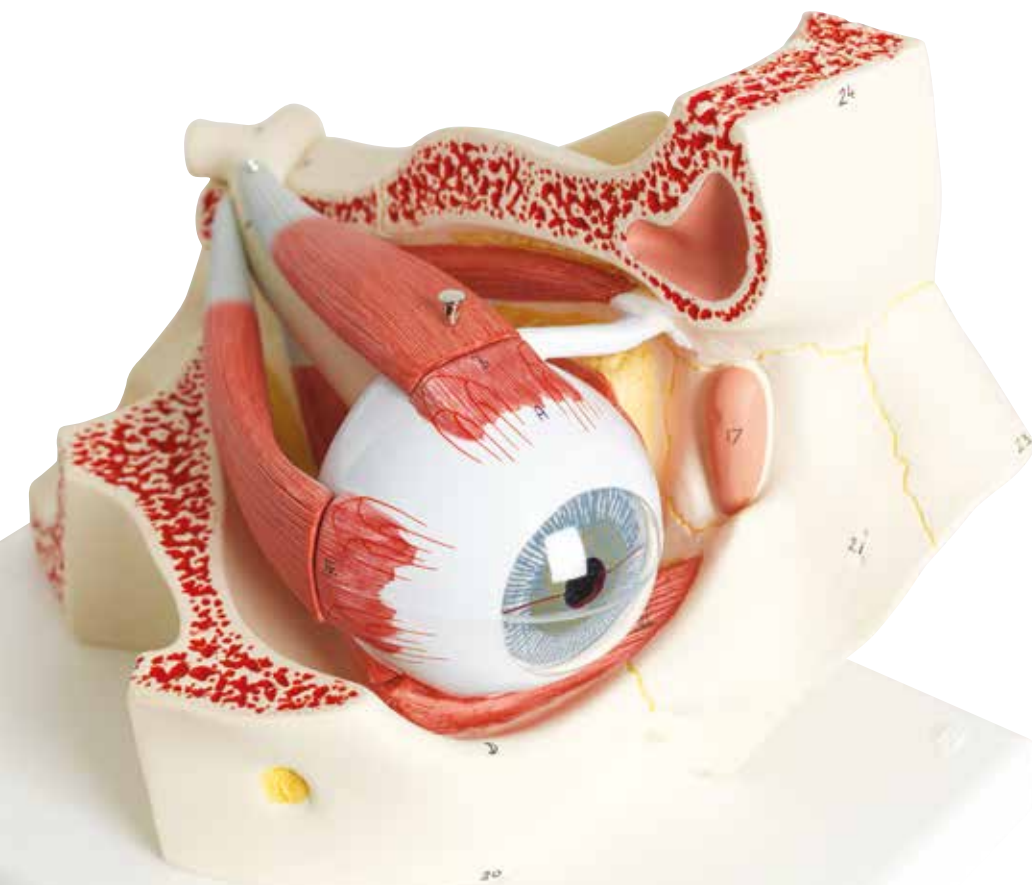


EYE MODELS



Eye in Orbit, 3 times Life-Size, 7-part

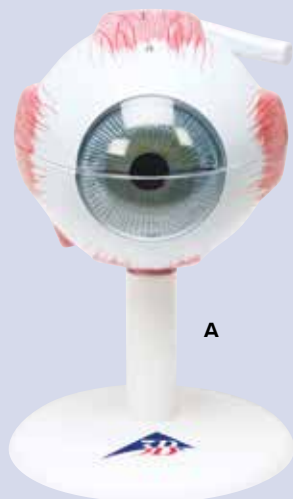
This large anatomical human eye model shows the optic nerve in its natural position in the bony orbit of the eye (floor and medial wall).

For closer study, it can be disassembled into:

- Includes the extraocular muscles
- Both halves of the choroid with iris and retina
- Eye lens
- Vitreous humour
- Bony orbit

18 x 26 x 19 cm; 1.1 kg

M-1000258



A

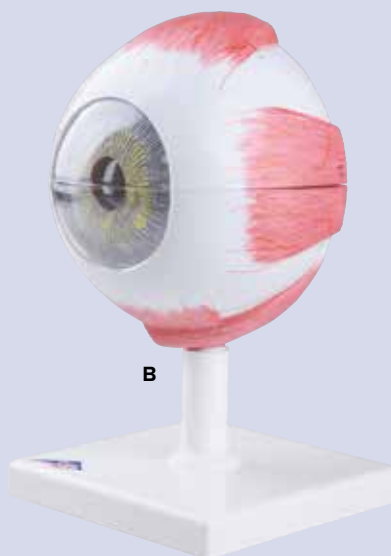
A. Eye, 3 times Life-Size, 6-part

Can be disassembled into the following parts:

- Both halves of the sclera with cornea and eye muscle attachments
- Both halves of the choroid with iris and retina
- Eye lens
- Vitreous humour

9 x 9 x 15 cm; 0.1 kg

M-1000259



B

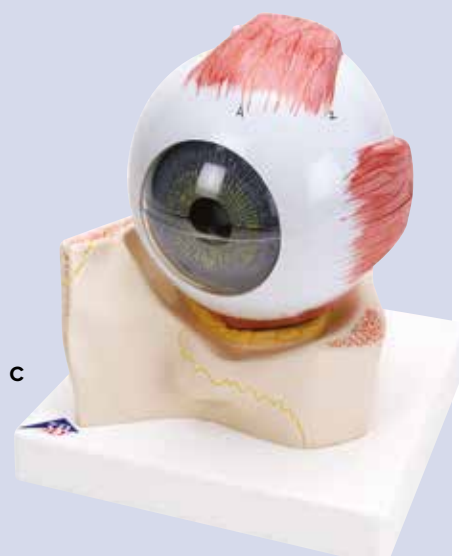
B. Eye, 5 times Life-Size, 6-part

This advanced eye model comes on a base, the following parts are removable:

- Upper half of the sclera with cornea and eye muscle attachments
- Both halves of the choroid with iris and retina
- Lens
- Vitreous humour

13 x 14 x 21 cm; 0.6 kg

M-1000255



C

C. Eye in Orbit, 5 times Life-Size, 7-part

- Upper half of the sclera with cornea and eye muscle attachments
- Both halves of choroid with iris and retina
- Lens
- Vitreous humour
- Shown in bony orbit

18 x 18 x 20 cm; 1 kg

M-1000256

