

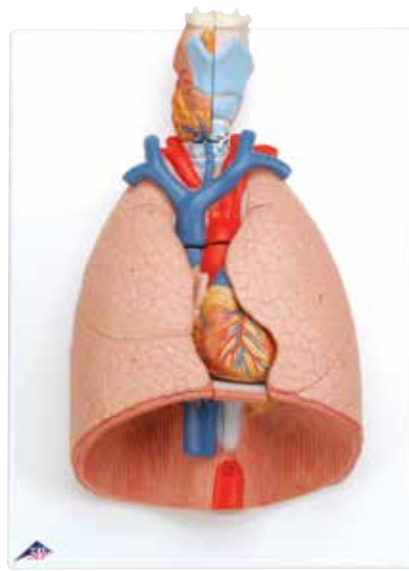


Segmented Lung

This high quality lung model is detachable into two lobes and single segments. The segments are colour coded and their position can be easily identified in the bronchial tree. The bronchial tree contains the lobar bronchi and segmental bronchi.

All segments are connected by magnets which allow a safe and easy handling. 25 x 25 x 35 cm; 4,1 kg

M-1008494



Life-Size Lung Model with Larynx, 7-part

The lung model with larynx is first class. 31x 41x 12 cm; 2,2 kg

This first class model comes on a baseboard and contains the following removable parts:

- 2-part Larynx
- Trachea with bronchial tree
- 2-part Heart
- Subclavian artery and vein
- Vena cava
- Aorta
- Pulmonary artery
- Oesophagus
- 2-part Lung
- Diaphragm

M-1000270



Life-Size Lung Model with Larynx, 5-part

Delivered on baseboard. 12 x 28 x 37 cm; 1,25 kg

Showing the following features:

- Larynx
- Trachea with bronchial tree
- 2-part Heart
- Vena cava
- Aorta
- Pulmonary artery
- Oesophagus
- 2-part Lung

M-1001243



Functional Larynx, 2.5 Times Full-Size

The epiglottis, vocal cords, and arytenoid cartilage are movable. 14 x 14 x 28 cm; 0,8 kg

Additionally representing the following structures:

- Hyoid bone
- Cricoid cartilage
- Thyroid cartilage
- Thyroid
- Parathyroid glands

M-1013870



Larynx, 2 Times Full-Size, 7-part

This medially sectioned model shows: larynx, hyoid bone, windpipe, ligaments, muscles, vessels, nerves and thyroid gland. The Thyroid cartilage, 2 muscles and 2 thyroid gland halves are removable. On stand. 12 x 12 x 23 cm; 0,8 kg

M-1000272



Larynx, 2 Times Full-Size, 2-part

This model partially shows the same features as M-1000272. However, it is only dividable into two halves. 9 x 9 x 14 cm; 0,15 kg

M-1000273



Functional Larynx

Epiglottis, vocal cords, and arytenoid cartilage are movable. Can be rotated on base. 32 x 13 x 15 cm; 0,8 kg

M-1001242

Connect With Us

