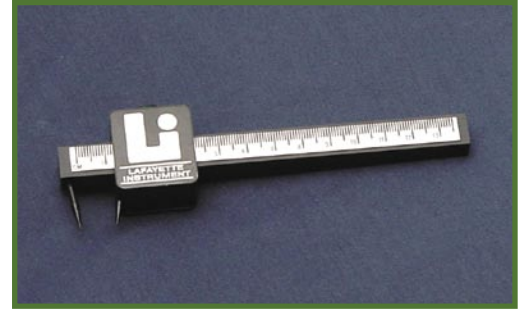


16011

Two-Point Aesthesiometer, Model 16011

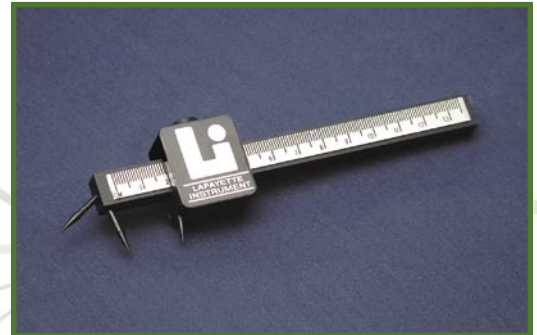
Useful in determining the two-point threshold of touch. Easy-to-read slide scales are calibrated to the nearest 0.1 cm. Special vinyl tips minimize influence of temperature on sensation.



16012

Three-Point Aesthesiometer, Model 16012

The third point allows easy alternation between one- and two-point testing.



16010

Quality Cutaneous Sensitivity Kit, Model 16010

Tactile kit contains all items necessary for the study of heat and cold sensitivity, touch sensitivity and pressure sensitivity. This unit, designed for use in the student laboratory, includes temperature cylinders, paradoxical heat grill, aesthesiometers, thermometer, immersion heater, carrying case, instructions and sample experiments. A blindfold may be desired, but is not included.



16014

Kinesthesiometer, Model 16014

This standardized tool for spatial awareness measures arm movement, is well suited for active and passive movement, or for comparing the two. An adjustable finger guide and elbow saddle increases subject comfort while keeping subject's arm in position. Units of measure are given as a degree of displacement along a 90-degree scale.

