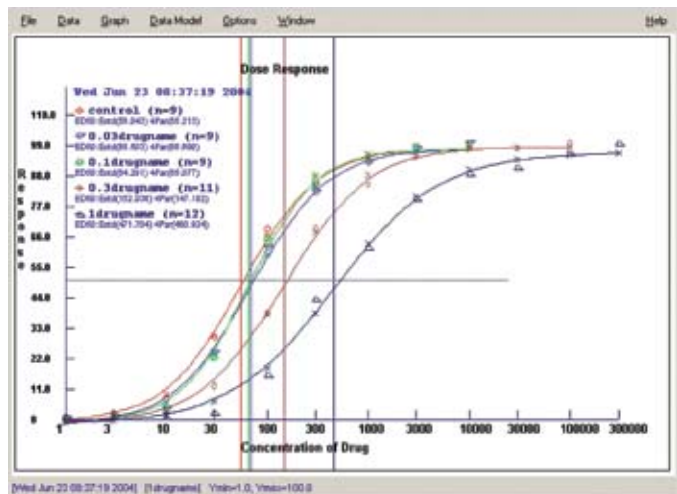
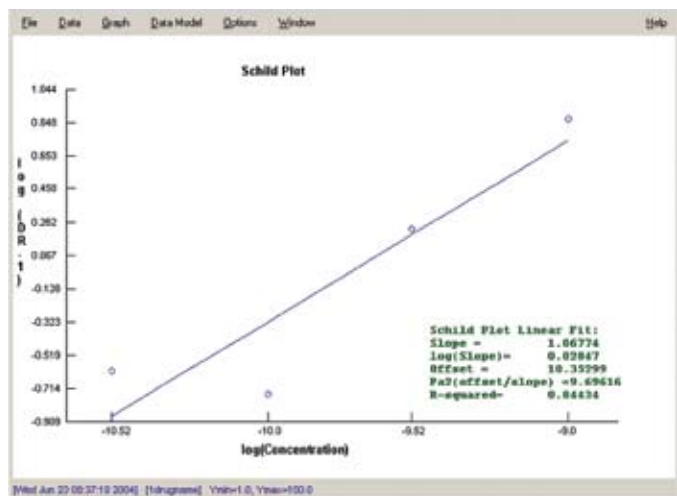


**Automark and extract maximum response values.**



**Use a custom script to build dose response graphs ...**



**... and Schild plots.**

Data-Trax also controls the built in stimulator in The WPI-118 and T-series recorders. Pulse protocols can be created in advance, stored and delivered automatically or on command. Pulse durations, frequencies and amplitudes can be changed as the protocol is being delivered. The software also offers full control of digital I/O lines that can be used to count events, or control devices in the lab environment such as valves or injectors. Using WPI's AUTODRAIN together with the Data-Trax protocol generator, the entire process of draining, filling, and drug delivery can be automated.

## ABE

The dose response software provided is based on ABE, an open source freeware Module written by Gordon Webster. The package as provided has been modified to accept Data trax formatted data and provide a smooth transition from recording to analysis

ABE is written in Python 2.2 and uses the Tkinter graphic library to generate a friendly graphical user interface (GUI) for manipulating and visualizing the data.

For the data modeling, ABE uses the nonlinear regression routines from the Scientific Python (SciPy) and Numeric libraries as well as the polyfit function from Raymond Hettingers Public Domain Matfunc module for computing the fitted polynomial coefficients from the supplied data. Functions for computing the derivatives of the fitted polynomials, solving polynomial roots and estimating the initial parameters for the nonlinear regression were added by the author and are included in the body of the main Abe module. In addition to the libraries of the standard Python distribution therefore, only the SciPy, Numeric and Matfunc modules need to be included in the Python path for ABE to be run. These are provided on the Data-Trax install disk

## Options

### Heating Circulator

Ideal for controlling temperatures of external systems. This heating circulator features a polyphenyleneoxide (PPO) construction with a powerful 17 liter per minute flow rate pump for optimum heat exchange with a 12 mm hose. The working temperature range is 25-100°C. A tap water cooling coil (with a working temperature range of 20-100°C) is fitted as a standard feature. The unit comes with a stainless steel cover. The 115 V model is equipped with a 1200-watt heater and the 230 V model comes with a 2000-watt heater.

The bath has a volume of 5 liters and an opening of 13 x 17 x 16 cm. The overall dimensions of the unit are 16 x 33 x 36 cm. Shipping weight: 22 lb (10 kg).

**Menu-driven control module allows easy temperature setting, correction and display. Temperature accuracy of  $\pm 0.02^\circ\text{C}$ .**



<b>500787</b>	Haake DC10-P5/U Circulating Bath (115 V)
<b>500788</b>	Haake DC10-P5/U Circulating Bath (230 V)
<b>500789</b>	Haake DC10-P5/U Circulating Bath (100 V)

سوماتكو  
SOMATCO  
www.somatco.com



Connect With Us

