

9982-1008493



9982-1001243



9982-1000270

Pulmonary Lobes

The model shows an external pulmonary lobe with a magnification of 130x. The following are represented:

- Segmental bronchus and its terminal branches (bronchioles)
- Alveolus opened on the right side
- Pulmonary vessels and their capillary networks
- Branch of a bronchial artery
- Pulmonary pleura
- Connective tissue septum on the left side
- Single opened alveolus with surrounding capillary network with a magnification of approx. 1000x on the rear side

A graphic representation on the stand of the model shows the structure of the air routes in the lungs up to the alveolus.

26x33x19 cm; 1.4 kg

L/D/E/S/F/P/J/C/R

9982-1008493

Lung Model with Larynx, 5-part

Showing the following features:

- Larynx
- Trachea with bronchial tree
- 2-part heart (removable)
- Vena cava
- Aorta
- Pulmonary artery
- Oesophagus
- 2-part lung (front halves removable)

Delivered on baseboard.

12x28x37 cm; 1.25 kg

L/D/E/F/S

9982-1001243

Lung Model with Larynx, 7-part

This first class model contains the following removable parts:

- 2-part larynx
- Trachea with bronchial tree
- 2-part heart
- Subclavian artery and vein
- Vena cava
- Aorta
- Pulmonary artery
- Oesophagus
- 2-part lung (front halves removable)
- Diaphragm

On baseboard.

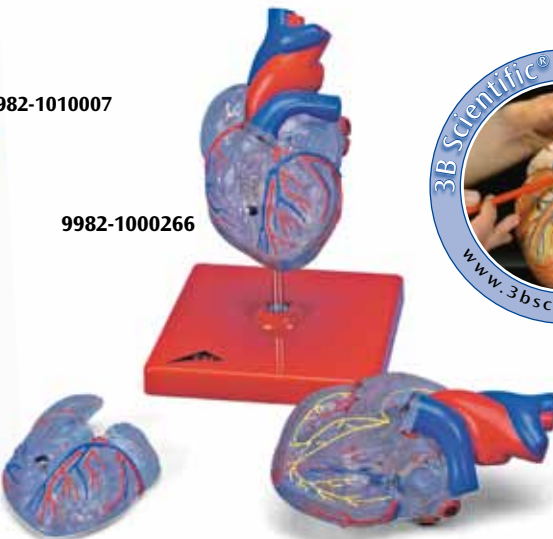
31x41x12 cm; 2.2 kg

L/D/E/F

9982-1000270



9982-1010007



9982-1000266



Heart Model

The 5-part heart model is a didactically prepared original reproduction of a real human specimen.

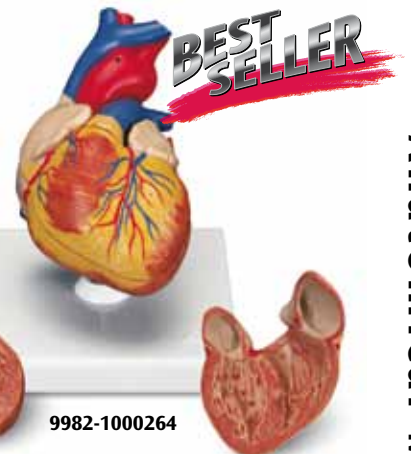
- The parts of the model are fixed together with magnetic connections
- They can be taken apart very easily
- A true to original representation of all anatomical structures (e.g. papillary muscles and cardiac valves) in the atria and ventricles.
- Colour scheme and disassembly of the heart model in a didactical manner. The chambers of the heart and vessels (including coronary vessels) in which oxygen rich blood is transported have been displayed in red. Heart chambers and vessels which contain blood low in oxygen have been reproduced in blue.

13x19 cm; 0.6 kg

L/E/D/S/F/P/J/C/R

9982-1010007

Connect With Us



9982-1000264

Classic Heart with Conducting System, 2-part

Same features as 9982-1000264, however, this transparent model also displays the complete conducting system, which is represented in colour. Delivered on removable stand.

19x12x12 cm; 0.2 kg

9982-1000266

Classic Heart, 2-part

Highly detailed 2-part heart at a price you will love. The front heart wall is detachable to reveal the chambers and valves inside. Just slightly smaller than life size with exquisite detail throughout.

On stand.

19x12x12 cm; 0.3 kg

L/E/D/S/F/P/J www.

9982-1000264