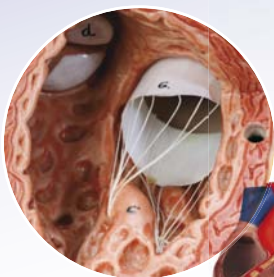


G10



G12

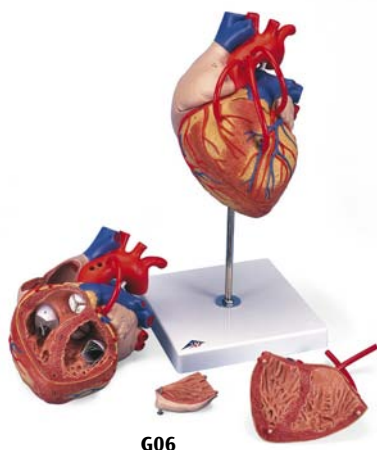
### Heart Model, 2-part

This model shows the anatomy of the human heart with ventricles, atriums, valves, veins, and the aorta in great detail. The front heart wall is removable to view the chambers and internal structures. Delivered on removable stand.

22x12x12 cm; 0.35 kg

L/E/D/S/F/P/J [www.somatco.com](http://www.somatco.com)

G10



G06

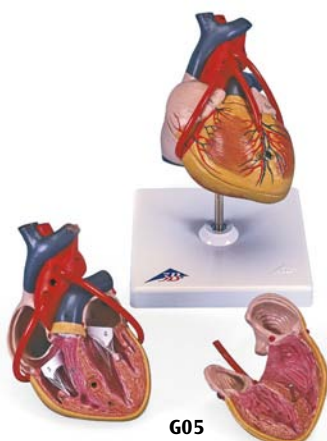
### Heart with Bypass, 2 times life size, 4-part

This 2-times life size heart is a great aid to teaching, even in large lecture halls or classrooms. The front heart wall can be removed to view the inner chambers of the human heart. In addition to the anatomy of the heart, this model shows a venal bypass to the ramus posterolateralis of the right coronary artery, to the ramus interventricularis ant. of the left coronary artery with branching to the ramus diagonalis as well as a bypass to the ramus circumflexus of the left coronary artery. On removable stand.

32x18x18 cm; 1.1 kg

L/D/E/F

G06



G05

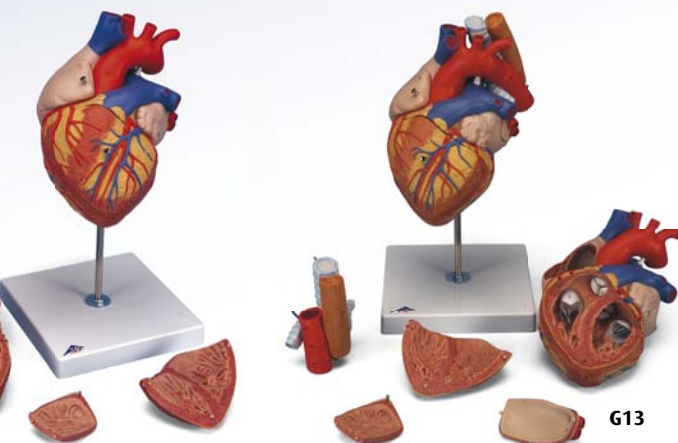
### Classic Heart with Bypass, 2-part

Same features as G08, additionally including venal bypasses to the right coronary artery, to the ramus inter-ventricularis anterior, and also to the ramus circumflexus of the left coronary artery, which are shown in colour. This model is a great aid for explaining the treatment of coronary heart disease. On removable stand.

19x12x12 cm; 0.35 kg

L/E/D/S/F/P/J [www.somatco.com](http://www.somatco.com)

G05



G13

### Heart, 2-times life size, 4-part

This 2-times life size heart model allows easy identification of all structures and is a perfect aid for lessons in large classrooms or lecture halls. The atrium walls and the front heart wall are removable to reveal the most professionally detailed and realistic heart available. Hand painted in Life like colours to depict dozens of items of anatomical interest. Delivered on removable stand.

32x18x18 cm; 1.3 kg

L/D/E/F

G12

### Heart with Oesophagus and Trachea, 2 times life size, 5-part

Same features as G12. Additionally depicts the upper section of the oesophagus, the upper bronchi and the ascending aorta. The front heart wall and the atrium walls can be removed. Delivered on removable stand.

32x18x18 cm

L/D/E/F

G13

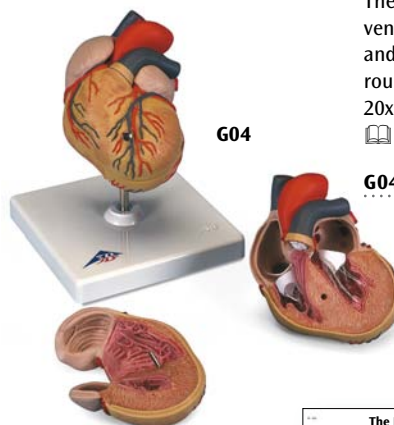
### Classic Heart with Left Ventricular Hypertrophy (LVH), 2-part

Same features as G08. Additionally, this unique model shows the long-term effects of increased heart activity due to high blood pressure. The muscular wall of the left heart ventricle is considerably thickened and the tip of the heart is visibly rounded off. On stand.

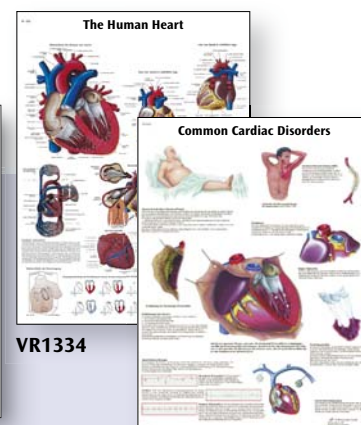
20x15x16 cm; 0.45 kg

L/E/D/S/F/P/J [www.somatco.com](http://www.somatco.com)

G04

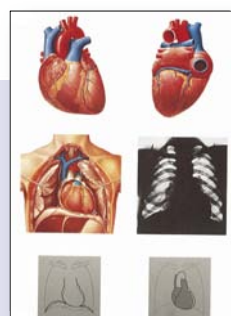


G04



VR1334

VR1343



V2053