

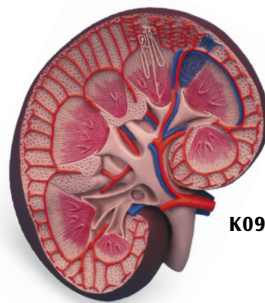
K10

Kidney Section, Nephrons, Blood Vessels and Renal Corpuscle
A complete series of 3 models (K10, K10/1, and K10/2) for studying the kidney and its different structures in great detail. Delivered on baseboard.
29x52x9 cm; 2.8 kg
[L/E/D/S/F/P/I/J](#) [www.](#)

K11

Basic Kidney Section, 3 times full size
Longitudinal section of the right kidney. All important structures are shown.
8.5x19x26 cm; 0.9 kg

K09



K09



K12



Kidney with Adrenal Gland, 2-part

This model shows:

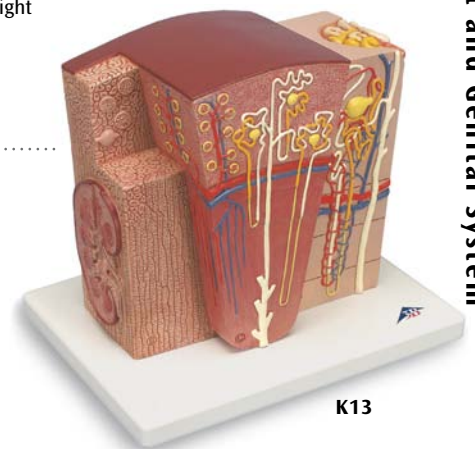
- Kidney with adrenal gland
- Renal and adrenal vessels
- Upper portion of ureter

The front half of the kidney is removable to enable demonstration of cortex medulla and vessels as well as renal pelvis. On stand.
20x12x12 cm; 0.9 kg
[L/D/E/F/S/P/I/J/R/C](#) [www.](#)

K12

Kidney Section, 3 times full size
Longitudinal section of the right kidney. On baseboard.
33x20x10 cm; 1.0 kg
[L/E/D/S/F/P/I/J](#) [www.](#)

K10



K13

3B MICROanatomy™ Kidney

This extremely detailed model shows the morphologic / functional units of the kidney greatly magnified. Six model zones illustrate the following fine tissue structures that serve the production of urine:

- Longitudinal section of a kidney
- Section of renal cortex and renal medulla
- Wedge shaped section of a kidney lobe with a diagrammatic depiction of three nephrons with Henle's loops of different lengths and diagrammatic representation of the vascular supply
- Diagrammatic illustration of a nephron with a short Henle's loop and didactic / diagrammatic illustration of the vascular supply
- Diagrammatic illustration of an opened renal corpuscle with nephron and light-microscopic transverse sections of the proximal, attenuated and distal segments of a renal tubule
- Diagrammatic / didactic illustration of an opened renal corpuscle

Mounted on a base.
23.5x25.5x19 cm; 1.3 kg
[L/E/D/S/F/P/I/J](#)

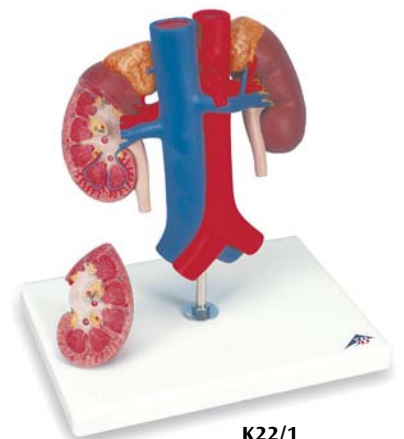
K13

Nephrons and Blood Vessels, 120 times full size
On baseboard.
26x19x5 cm; 0.7 kg
[L/E/D/S/F/P/I/J](#) [www.](#)

K10/1

Malpighian Corpuscle of Kidney, 700 times full size
On baseboard.
26x19x8 cm; 0.7 kg
[L/E/D/S/F/P/I/J](#) [www.](#)

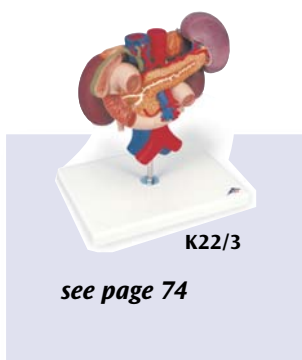
K10/2



K22/1

Kidneys with Vessels, 2-part
This model shows the kidneys with suprarenal glands, the outgoing ureters, the renal vessels and the large vessels situated close to the kidneys in natural size. The front half of the right kidney can be removed to reveal the renal pelvis, the renal calices, the renal cortex and the renal medulla.
On stand.
21x18x28 cm; 1.0 kg
[L/E/D/F](#)

K22/1



K22/3

see page 74

Connect With Us



سوماتكو
SOMATCO
[www.somatco.com](#)

