

# PRIMEDIC™ Defi-Monitor

## ECO 1



### Special features:

- ECG monitor tiltable  $\pm 30^\circ$
- large LCD-Display with high contrast
- clear structure of control panels
- easy to use
- slim housing, easy to carry in narrow door-frames and stairwells
- handy design of housing: protected connectors and paddle cables
- robust casing of highly shock-resistant synthetic material
- internal components carried on shock-absorbing foam without screws
- 5 seconds charging time up to 360 Joules
- ECG storage of the last 10 shocks
- long-life duration due to high battery capacity
- charging of battery via external charger
- defibrillator available with practical locking device, vehicle mounting and further options
- excellent price / performance ratio

	ECO 1	DM 1	DM 3	DM 10	DM 30	DM 10-12	DM 30-12
3-lead-ECG (I, II, III)	•						
6-lead-ECG (I,II, III, aVR, avL, aVF)		•	•	•	•		
12-lead-ECG (I,II,III, aVR, aVL, AvF, V1-V6)						•	•
1-lead-printer, speed 25 mm/sec.	•						
1 / 3-lead-printer, speed 25 or 50 mm/sec.		•	•	•	•	•	•
12-lead-printer (real time)						•	•
NELLCOR®-Pulsoximetrie integrated			•		•		•
PRIMEDIC™-module slot				•	•	•	•
enlarged operating panel for pacer				•	•	•	•

• = supplied with model

# PRIMEDIC™ Defi-Monitor

## ECO 1

### ECG:

3-lead ECG	
switchable filters	50/60 Hz
amplification of ECG	0.5/0.8/1/1.5/2 cm/mV
input impedance	> 50 MΩ
CMRR	> 90 dB
heartrate alarm adjustable	30 ... 300 <sup>1</sup> /min
heartrate	0 ... 300 <sup>1</sup> /min

### Monitor:

LCD monitor	
resolution	320 x 240 Pixel
pixel size	0.27 x 0.27 mm
monitor size	100 x 80 mm
diagonal size	125 mm / 5"

### Printer:

Thermal printer head	
1-lead printing	
paper size	58 mm
printing speed	25 mm/sec.
resolution	8 bits (≈ 200 dpi)

### Defibrillation:

Waveform	monophasic, damped sinusoidal
operating modes	synchronous / asynchronous
external defibrillation via paddles	
Paddle with integrated paediatric paddles	
energy levels	10/20/30/50/100/ 200/300/360 Joules (50 Ω)
discharges	60 with 360 Joules
charging time	5 sec. for 360 Joules

### Power supply:

exchangeable NiCd battery	14.4 V / 1.5 Ah
charging time for 100% charged battery	< 1 h
battery charging with optional charger or Accu-Care module	

### General:

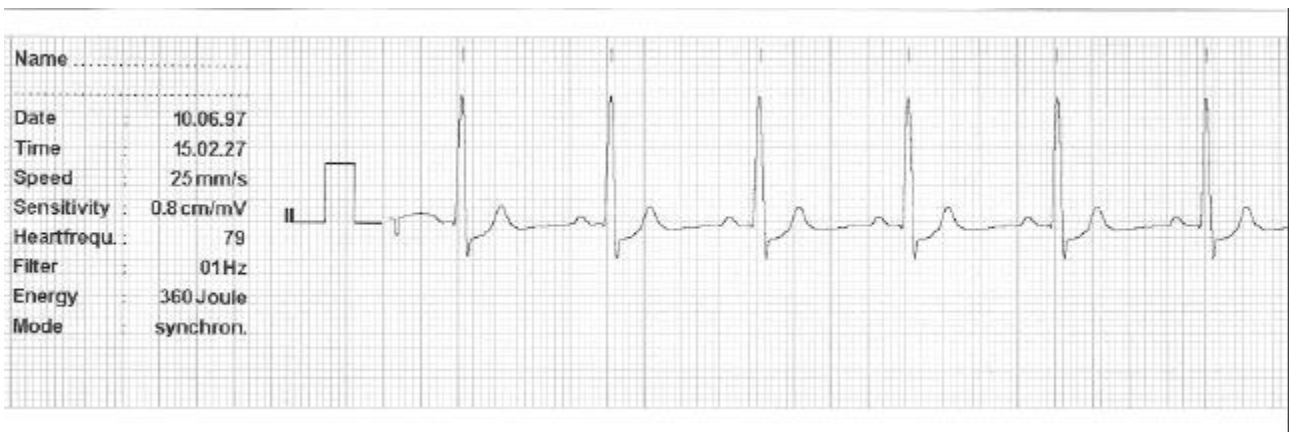
size	42 x 42 x 12 cm (W x H x D)
weight	8,5 kg
supply voltage	115 V 50/60 Hz or 230 V 50/60 Hz or 12 / 24 VDC on vehicles



### Supply with Defi-Monitor ECO 1 (Art.No. 96017):

1	PRIMEDIC™ Accu
1	EKG-patient cable, 4-pole with neutral electrode (3+N)
30	ECG-electrodes Ag/AgCl Ø 55mm
1	printer paper, 58 mm, 25 m
1	electrode gel, 60 g
1	user manual

technical modifications without notice



Original-printout 1-lead, printer speed 25 mm/sec.