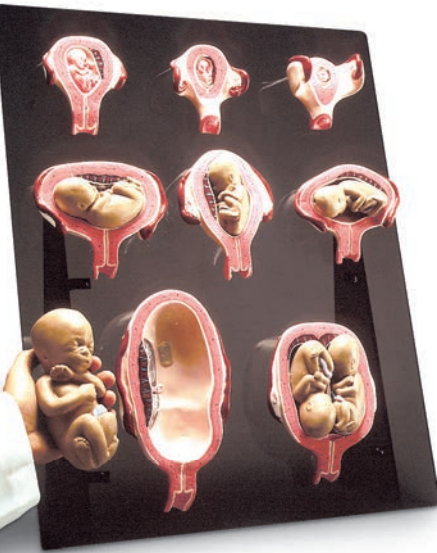


Childbirth Simulation



Intrauterine Human Development Models and Fetal Ultrasounds

Features eight beautiful, hand-painted, anatomically accurate models from 4 weeks to 7 months (including 5-month twins). This series of models depict the fetus inside coronally dissected pregnant uteri from the first through the seventh month of pregnancy. Second and third trimester fetuses are removable. The CD-ROM lets you view over 200 digital videos with accompanying text describing normal and abnormal fetal conditions during the first, second, and third trimesters. Fetal images on the CD-ROM range from 12 weeks to near term and were prepared in cooperation with experts at major teaching centers. Models are individually mounted on smoked Lucite® base. Models come with instruction manual. CD-ROM for Windows® 98/ME operating systems. Sh. wt. 16 lbs. (7.26 kg).

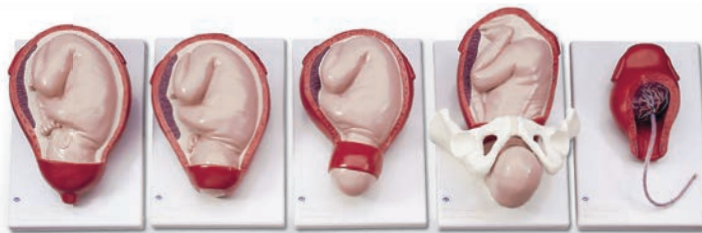
SB46516U Display and CD-ROM
SYSTEM REQUIREMENTS: Windows® 98 and higher



New! Childbearing, the Classic Series

A unique and beautiful series of illustrations by artist Jan Ruby Baird. Includes illustrations of female and male reproductive anatomies, conception, fetal development, pregnancy changes, entire birth process, and normal newborn appearance. Over 70 line drawings provide additional topics for quick reference. These 57 full-color illustrations are combined in a set of 22 charts 23" x 20" (58 x 50 cm) wire-bound in a storage case that opens to create its own display easel. Fully illustrated teaching notes included. Sh. wt. 8 lbs. (3.63 kg).

SB15913U



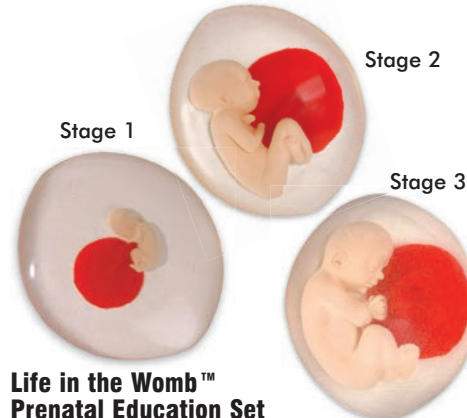
Childbirth Model
This life-size model shows the five stages of birth: fetus in uterus with os uteri closed, with os uteri open, the beginning of the emergence of the head, the complete emergence of the head, and the placenta in the uterus. Each stage is on a separate base. Sh. wt. 28 lbs. (12.70 kg).

SB23505U

Fetus Development Set

Set of eight models (14 pieces) illustrates the detailed stages of pregnancy development. Includes a first-month embryo, second-month embryo, third-month embryo, fourth-month fetus in transverse lie position, fifth-month fetus in breech position, fifth-month fetus in transverse lie position, fifth-month twin fetuses, and seventh-month fetus. Each model is on a base and measures approx. 4 1/2" x 6" x 8" (11 x 15 x 20 cm). Sh. wt. 8.50 lbs. (3.86 kg).

SB47759U



Life in the Womb™ Prenatal Education Set

This exciting set of products brings any prenatal education program to life. Three soft, palpable fetal models represent different developmental stages of pregnancy. Reviewing development from conception to 6 weeks postpartum is made easy with the accompanying "With Child" Life-Size Display. Set includes three fetal models (3 1/2, 7, and 9 month), "With Child" Life-Size Display 18" x 24" (46 x 61 cm), and carry case on wheels. Sh. wt. 37 lbs. (16.78 kg).

SB32703U



Full-Term Pregnancy

Pregnant Woman Model

A life-size median section of a female in the ninth month of pregnancy is shown in this three-part model. The placenta is in the uterus, and the fetus is removable. Sh. wt. 16 lbs. (7.26 kg).

SB23480U

Guide to Contraceptives Display
Present the full spectrum of birth control choices with this 3-D exhibit! Contraceptives and hand-painted anatomical models are mounted in an attractive carry case with fold-out information panels that give the facts about various birth-control methods. Great for schools, clinics, or medical offices, the display measures 29" x 20" (73 x 50 cm) when open, and is designed to sit on any tabletop surface. Stand alone panels are 12" x 17 1/2" (30 x 44 cm) each. Reproducible handout included. Sh. wt. 14 lbs. (6.35 kg).

SB23376U