



W42507

Intestinal Villi, 100 times life size

This model consists of one entire villus, one longitudinally sectioned villus showing the arterioles and venules and one sectioned villus to show the lymphatic vessels. Also includes a longitudinal section of Lieberkühn's crypt. On base. 43x28x10 cm; 2.5 kg

E

W42507



W42508

Liver with Gall Bladder, 1.5 times full size

The complex vessels network in the opened liver, displayed in different colours:

- The hilus vessels
- The extra hepatic and intra hepatic bile ducts
- The gall bladder

Mounted on stand. 36x30.5x16 cm; 1.8 kg

W42508



K25

Liver with Gall Bladder

- 4 lobes with gall bladder
- Extrahepatic ducts
- Hilus vessels

On removable stand. 18x18x12 cm; 0.5 kg

L/D/E/F

K25

Liver with Gall Bladder, Pancreas and Duodenum

This excellent relief model shows the liver with:

- Ducts
- Gall bladder
- Pancreas
- Duodenum
- Vessels
- Extra hepatic ducts with gall bladder
- Main pancreatic duct and their orifices

On baseboard.

4x20x18 cm; 0.8 kg

L/E/D/S/F/P/I/J www.

VE315

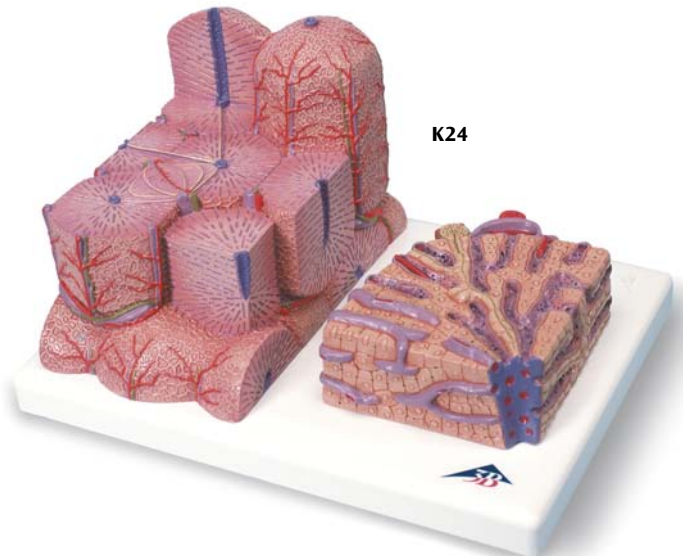
3B MICROanatomy™ Liver

This 2-part model shows a highly magnified diagrammatic view of a section of the liver. The left part of the model shows a section of the liver that comprises several lobules. The right part of the model is a highly magnified view of the sectioned lobule on the left.

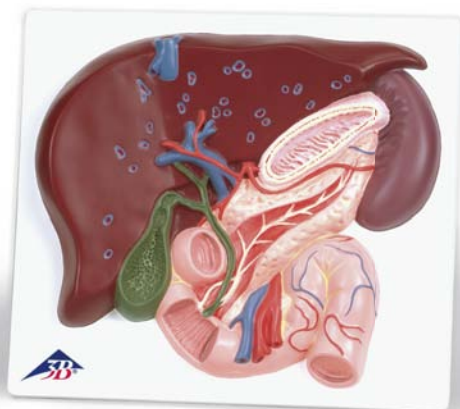
15x26x18.5 cm; 0.7 kg

L/E/D/S/F/P/I/J www.

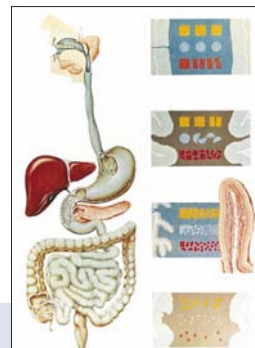
K24



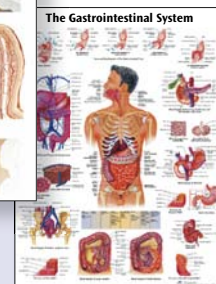
K24



VE315



V2043



VR1422



VR1425

You will find our large selection of Charts starting on page 106.