

Catheterisation Trainers for Clinical Skills

These fantastic catheterisation trainers have been developed to practice catheterisation on an very realistic model. It does not loose liquid after the training.

- Floppy and soft to touch
- Palpation of the pubic symphysis is clearly identified
- Inserting a suprapubic catheter is quite straight forward and drainage can follow
- The bladder will hold up to 1.5 pints or 800 ml of liquid and the tummy is palpably soft to touch
- Full instructions and an accessory kit with lubricant gel and a bladder syringe are included
- A small amount of gel on the tip of the catheter will enhance the procedure considerably
- Resistance is felt where one would expect and once passed this point flow is easy to achieve

All trainers come equipped with a coated Foley catheter in an appropriate size (16 CH. for the male, 14 CH for the female), lubricant to aid access and a kidney dish. Rubber catheters are preferable to the use of sylastic materials.

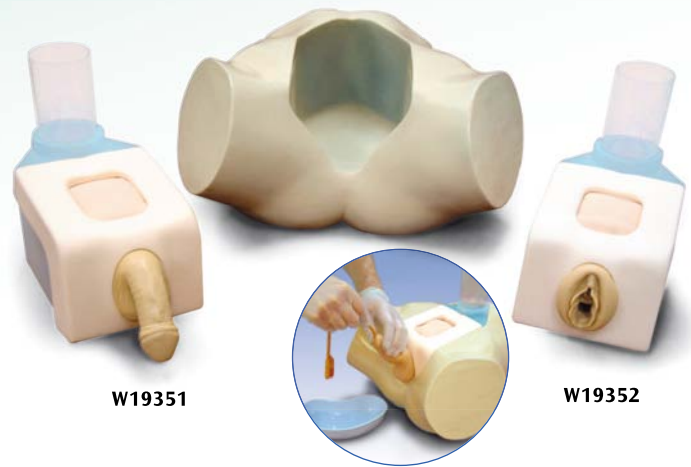
43x22x22 cm; 4.9 kg.

Male Urethral and Suprapubic Catheterisation Trainer

W19351

Female Urethral and Suprapubic Catheterisation Trainer

W19352



Options and Replacements for W19351 and W19352

Art. Nr.	Description	Dimensions / Weight
W19353	Penis	12.5x12x12 cm; 0.38 kg
W19354	Vulva	12.5x12x12 cm; 0.28 kg
W19355	Suprapubic Skin Pads	20x1.2x1 cm; 0.12 kg

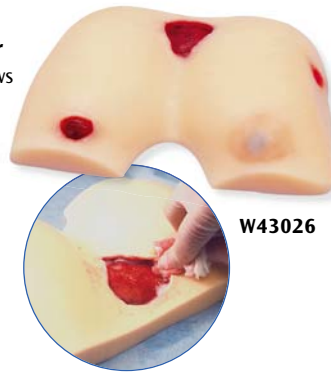
Decubitus Treatment Simulator

This model of a human buttock shows first, second, and third-degree decubitus and allows practice of washing and dressing procedures.

24x37x9 cm

E

W43026



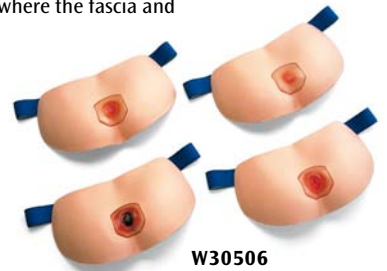
Decubitus Treatment Simulator

These models of the human sacral region can be fastened on to the body of a student or a training doll like a belt and are made of soft realistic material. The set consists of 4 different "belts" and represent the following stages of decubitus in an extremely realistic fashion:

- Stage I: The epidermis has not yet been torn but redness can be observed
- Stage II: Abrasion, bleeding and effusion can be observed
- Stage III: Healing process of stage IV where the fascia and musculature have been affected
- Stage IV: Decubitus ulcer with visible tissue structures down to the bone.

E/J

W30506



Seymour II™ Decubitus Treatment Simulator

Redesigned and now made with a new flexible, life like material that permits the application and easy removal of dressings, without leaving an adhesive residue. Still the most comprehensive model of its kind, molded from a 74-year-old patient, looks and feels like the real thing. Displaying the following pressure ulcers* (NPUAP 2007 – National Pressure Ulcer Advisory Panel): Stage I, Stage II, Stage III with undermining, tunneling, subcutaneous fat and slough, deep Stage IV with exposed bones, undermining, tunneling, subcutaneous fat, eschar and slough. Also shown are a suspected DTI (Deep Tissue Injury), unstageable full eschar/slough wound, and a dehiscent wound. The Stage III and Stage IV are positioned so that a "bridging" dressing for use with a vacuum assisted closure and negative pressure wound therapy devices can be demonstrated and practiced. This model makes it possible to visualize and understand the differences in wounds. Great care has been taken to colour each wound just as you would see it on a patient. You are able to demonstrate and practise wound cleansing, classification, staging, and assessment, as well as the measurement of wound length, depth, undermining, and tunneling. The positioning of the wounds permits multiple dressings to be demonstrated at the same time.

E

W46500/1



W46500/1

Options and Replacements for W46500/1

Carrying Bag

With side compartment for dressing material.

W46501



VR1717



You will find our large selection of Charts starting on page 106.