



### Intubation Torso

This upper torso features:

- Realistic chest cavity with trachea, bronchi and lungs, heart and stomach
- Nominal 18 mm airway
- Anatomically accurate mouth, tongue, airway and oesophagus
- Fully articulating head, neck and jaw
- Wide, straight, stiffer epiglottis and realistic vocal cords
- Soft neck with cricoid cartilage

The following airway management procedures can be performed:

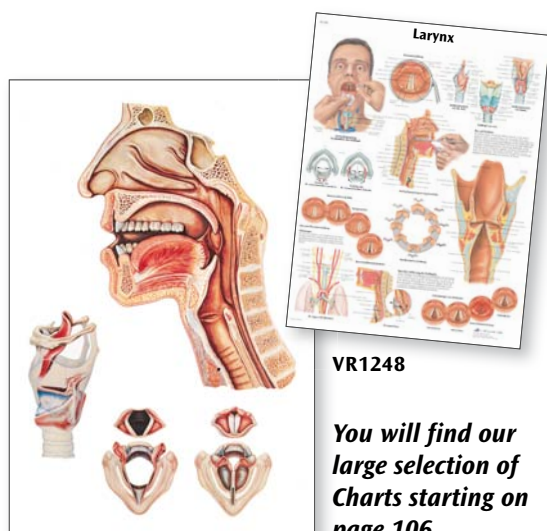
- Head tilt /chin lift, jaw thrust and neck extension into the sniffing position
- Placement of cuffed ET tubes and EOA (Oesophagus Obturator Airway)
- Intubation (oral, digital, nasal)
- Sellick manoeuvre
- Observation of unilateral or bilateral lung expansion under positive pressure ventilation
- Surgical placement of tracheotomy tube
- Emergency needle cricothyrotomy stick
- Bilateral tension pneumothorax decompression

Supplied with 6 neck collars, 3 cricoid cartilages, membrane tape and carrying bag. Laryngoscope and tube are not included in scope of delivery.

76x56x30.5 cm; 11.4 kg

E

W45156



V2007

Connect With Us



VR1248

*You will find our large selection of Charts starting on page 106.*

W44668



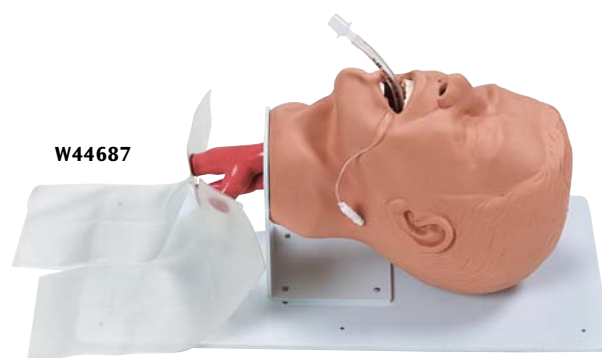
### Adult Airway Management Trainer

Detailed anatomy featured on the adult intubation trainer stands out. Get a clear picture of human anatomy from the sculpted alveolar sac, bronchial tree, and blood vessel structures of the cross sectioned and exposed flexible lungs, to the interior main bronchus and oral / nasal pharyngeal spaces. Combine these details with an airway complicated by breakout teeth, tongue oedema, and laryngospasm, and this airway trainer rates hard. An anatomical stomach that swells with oesophageal intubation, or excessive pressure with the BVM during rescue breathing, together with the vomiting capability of this manikin makes this an exceptional educational tool for multitasking. Includes instructions for use, soft carry bag, lubricant and replaceable lungs and stomach.

84x64x30 cm; 20 kg

E

W44668



W44687

### Economy Adult Airway Management Trainer

This detailed adult intubation head comes mounted for clinical teaching and practice of advanced airway management. Intubation procedures and skills, including anatomy knowledge and recognition, endotracheal intubation, nasotracheal intubation, use of field emergency airway adjunct tubes like LMAs and Combitube, securing, and suctioning, and maintenance of the installation can all be practiced with this unit. A soft carry bag, lubricant, and instructions for use are included. Without tube.

53x23x25 cm; 4.5 kg

E

W44687