



W44046

### Elderly Care Manikin, III

This nursing manikin features an elderly appearance and is convertible between male and female. It allows the practice of a wide range of basic and advanced nursing skills including catheterisation. The right i.v. arm features veins that actually roll when palpated. A realistic flashback confirms proper needle placement and the shoulder can be used for intramuscular injection training. The left blood pressure arm reproduces the five Korotkoff sounds and allows the instructor to vary systolic and diastolic levels, pulse rate, volume and auscultatory gap. All other features same as W44077 on page 101.

95.5x52x28 cm; 16.4 kg

E

W44046

### Patient Care Manikin

Full-size adult manikin with movable joints as well as soft fingers and toes for training of important basic nursing skills such as:

- Hair care exercises and surgical draping
- Bathing and bandaging
- Oral and denture hygiene (movable jaw with removable dentures)
- Ophthalmic exercises
- I.m. injection (arm and buttock)
- Colostomy, ileostomy, and suprapubic stoma care
- Naso-gastric lavage and gavage
- Male and female catheterisation
- Enema administration
- Vaginal douching and pap smear exercises

109x56x36 cm; 14.0 kg

E

W45011



W45011

### Options and Replacements for W45011

W45021	Arm Injection Site
W45022	Buttock Injection Site
W45023	Carrying Bag

Connect With Us



### Options and Replacements for W44046

#### Skin and Vein Kit

W44132

### Elderly Care and BLS Manikin

This adult manikin facilitates training of basic and advanced patient care as well as Basic Life Support functions. Features include:

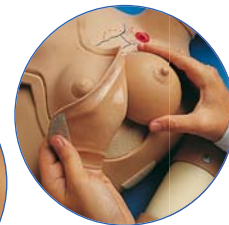
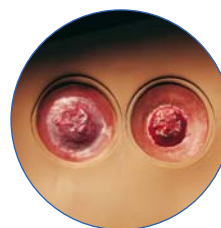
- Oral and denture hygiene
- I.m. (arm and buttock), i.v and subcutaneous injection
- Ostomy care (colostomy, ileostomy, and suprapubic stoma, each connected to an internal tank)
- Naso-gastric lavage and gavage
- Male and female catheterisation
- Enema administration
- Vaginal douching and pap smear exercises
- Palpable prostate
- Breast palpation (interchangeable male and 7 abnormal female breasts)
- Amputation stump
- 2 decubitus ulcers
- Eyes open and close (one pupil is dilated)
- Regular or counter pulsation CPR (Anatomically painted outline of cardiopulmonary features)
- Mouth to mouth resuscitation
- Palpable carotid pulse
- CPR Monitor: Displays cadence and depth of compression and ventilation

Supplied with ten disposable one-piece airways, neck brace, and carrying bag.

110x56x36 cm; 25.0 kg

E

W45001



W45001

### Options and Replacements for W45001

#### 10 Airways

W45007

#### W45158/W45159/W45160 Blood Pressure Training Arm

See page 125 .

#### CPR Computer Link

This link connects your CPR Simulators (if given as an option) to any computer having Windows 98. The interactive software features colour graphics for CPR teaching and testing stations for either adult, infant or newborn mode. Cardiac compression and airway ventilation waveforms can be monitored, saved and printed.

Supplied with carrying bag.

W45149

سوماتكو  
SOMATCO  
www.somatco.com

