



Pinhole viewer

KS 3 16+

- Demonstrates how the intensity of light and differently shaped lenses affect the images received by the eye

Catalogue No
XFH-340-T



LED light source, Student polarimeter
and glass sample tube,
Advancing Physics, page 98



Demonstration light guide

KS 4 16+

- A length of perspex with an acute bend
- When a light is directed at one end, it gives an excellent demonstration of fibre optics

Catalogue No
XFU-260-V

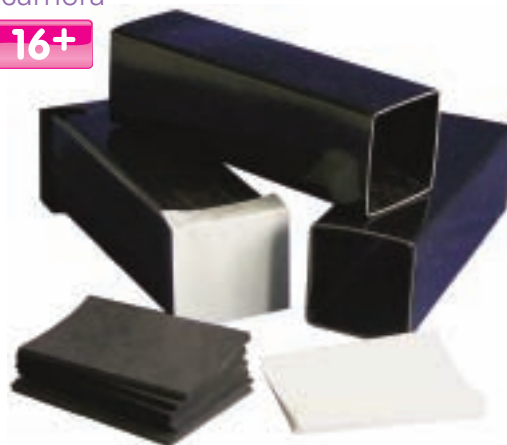


Connect With Us



Pinhole camera

KS 3 16+

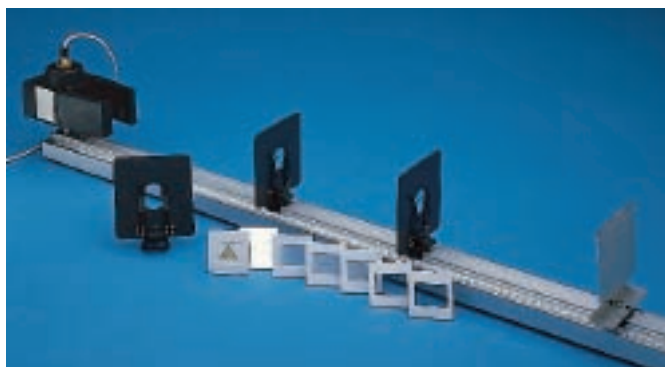


- For the investigation of basic image production
- Constructed from durable black PVC tubes (200mm x 70mm) with black paper squares with pinholes at one end and frosted screens at the other
- Requires bright light source or lamp
- Ideal for repeated use
- Supplied with 10 tubes, black paper and frosted plastic film

Catalogue No
XFH-340-100P

Accessories
Catalogue No
XFH-340-101N
XFH-340-102L

Description
Spare black paper, 10 x A4 sheets
Spare frosted paper, 10 x A4 sheets



Optical bench set

16+

- For use in a wide range of optics experiments including focal length of lenses, curvature or mirrors and lens combinations etc
- Comprises non-twisting aluminium alloy bench (1,200mm) with easy to read scale divided into cm and mm; light source with mounting rod, bulb (12V, 24W), 2m of flex and 2 x 4mm plugs; 3 x universal holders on sliders; 50mm x 50mm slides: triangular gauze object with image return screen, 2 x pin objects, diffuser/screen and scale object; magnification accessory with concentric circles 10mm and 20mm diameter; 100mm x 100mm double sided scaled screen on slider; 50mm x 50mm plane mirror

Catalogue No
XFC-400-U

Accessories
Catalogue No
EKR-420-010D
XFC-524-680S

Description
Griffin Lockavolt power supply
Colour mixing set

Spare Parts
XFC-404-020N

Universal holder on slider