



VB127

Head Musculature

Representation of the superficial musculature of head and neck showing:

- Parotid gland
- Submandibular gland (right half)
- Deep musculature (left half)
- Lower jaw partially exposed

24x18x24 cm; 1.2 kg
L/D/E/F/S

VB127



VB128

Head Musculature with Blood Vessels

Same features as VB127. Additionally displaying blood vessels.

24x18x24 cm; 1.2 kg

L/D/E/F/S

VB128



VB129

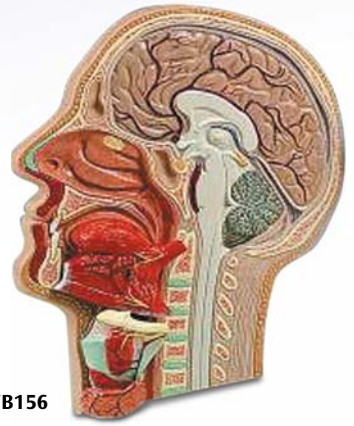
Head Musculature with Nerves

Same features as VB127. Additionally displaying nerves.

24x18x24 cm; 1.2 kg

L/D/E/F/S

VB129



VB156

Median Section of the Head, 5-part

Relief model. Dissectible into:

- Tongue with sublingual gland and mouth floor musculature
- Thyroid cartilage with associated musculature
- Larynx
- Thyroid gland

2.5x23.5x27 cm; 1.2 kg

L/D/E/F/S

VB156



W42512

Head and Neck, 5-part

Representation of the head (differentiated in colour), medially divided. The skin and facial muscles of the right outer half are removed to show the deeper structures. Eyeball, bone cover over the sinus maxillaries and right tongue half are removable.

38x36x25 cm; 3.0 kg

E

W42512

Art. Nr.	Description
D10/1	Lower Incisor, 2-part
D10/2	Lower Canine, 2-part
D10/3	Lower Single-Root Pre-Molar
D10/4	Lower Twin-Root Molar Showing Caries Attack, 2-part
D10/5	Upper Triple-Root Molar, 3-part



Classic Tooth Model Series, 5 models

This series shows 5 representative types of adult dentition individually mounted on removable stands:

- 2-part lower incisor with longitudinal section (D10/1)
- 2-part lower canine with longitudinal section (D10/2)
- Lower single-root pre-molar (D10/3)
- 2-part lower twin-root molar with longitudinal section showing caries attack (D10/4)
- 3-part upper triple-root molar with longitudinal section and caries insert (D10/5)

Also available individually.

23 – 29 cm; 2.0 kg

L/D/E/F

D10



Connect With Us

