



D25



VE290

Half Lower Jaw, 3 times full-size, 11-part

The front section of bone and all the teeth are removable, one incisor is longitudinally sectioned. Nerves, blood vessels, the sublingual and submandibular glands are shown.

22x32x9 cm; 1.1 kg

L/D/E/F

VE287

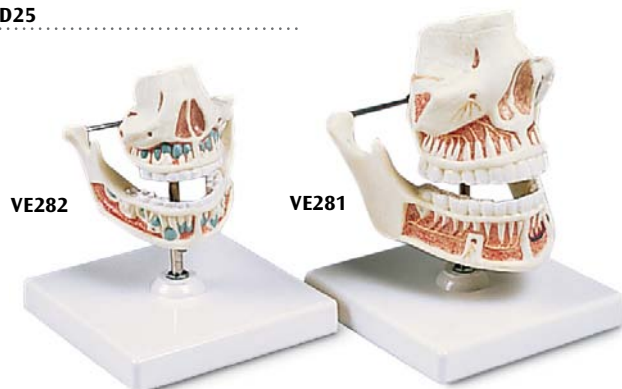
Half Lower Jaw, 3 times full-size, 6-part

This model represents half of the lower left jaw of a young person. One section of bone is removable to expose the tooth roots, spongiosa, vessels and nerves. Canine and first molar are removable, and longitudinally sectioned. On stand.

35x18x36 cm; 1.2 kg

L/D/E/F

D25



VE282

VE281

Milk Dentures

Upper and lower jaw are opened to show the arrangement of the remaining teeth. On base.

13x12x13 cm; 0.6 kg

L/D/E/F/S

VE282

Adult Dentures

Tooth roots, spongiosa, vessels, and nerves are exposed. The lower jaw is movable. On base.

16x12x13 cm; 0.9 kg

L/D/E/F/S

VE281

3B MICROanatomy™ Tongue

The latest model in our 3B MICROanatomy™ series, the tongue, is fascinating because it combines enlargements of various different parts of the tongue in one model. It comprises a macroscopic view of the tongue in life size (dorsal view) and microscopic views of the various papillae of the tongue (10-20x life size) and of a taste bud (approx. 450x life size). All views are mounted on a base that also features an overview of the sensory and sensitive innervation of the tongue. A unique model for an intensive study of the tongue.

14,5x32,5x20 cm, 0,8 kg

L/D/E/F/I/S/P/J/R/C www.

D17



D17

Advanced Half Lower Jaw with 8 diseased teeth, 19-part

The front section of bone and all the teeth are removable, one incisor is longitudinally sectioned. Nerves, blood vessels, the sublingual and submandibular glands are shown. The diseased teeth show various stages of caries from a small and easy-to-treat example on an incisor, through to advanced degradation of a molar, showing exposed root. Using this model it is simple to explain the necessity of good tooth care.

22x32x9 cm; 1.1 kg

L/D/E/F

VE290



D20

Dentition Development

Cast from a natural specimen, 4 upper and lower jaw halves, 4 different stages of development:

- New born
- Approx. 5-year old child
- Approx. 9-year old child
- Young adult

33x10x20 cm; 0.5 kg

L/D/E/F

D20

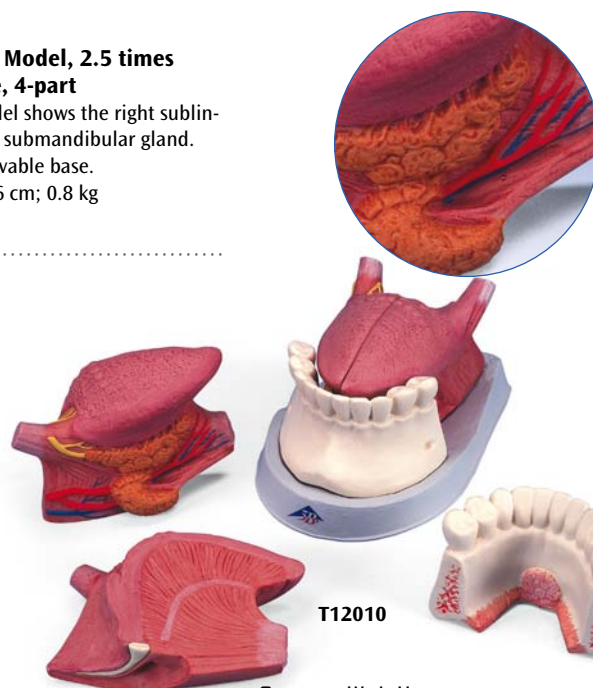
Tongue Model, 2.5 times life-size, 4-part

This model shows the right sublingual and submandibular gland.

On removable base.

23x17x16 cm; 0.8 kg

T12010



T12010

Connect With Us

