



VJ510



The World's Largest Ear Model, 15 times full size, 3-part

At 15 times life-size, this 3-part ear is suitable for museums and special collections as well as large lecture halls and conferences. Representation of outer, middle and inner ear. The auditory ossicles and the labyrinth with cochlea and vestibulocochlear nerve can be removed and studied in detail. On base.

130x120x60 cm; 52 kg

📖 L/E/D/S/F/P/I/J www.somatco.com

VJ510

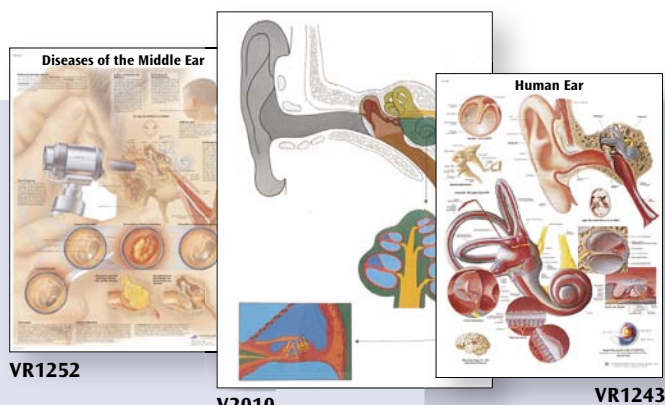
Giant Ear, 5 times full size, 3-part

This version is a whopping 5 times life-size for easy viewing from anywhere in the classroom! Representation of outer, middle and inner ear. Removable auditory ossicles and labyrinth with cochlea and vestibulocochlear nerve. Delivered on base.

25x41x25 cm; 3.0 kg

📖 L/D/E/F/S

VJ513



VR1252

V2010

VR1243



VJ513

Connect With Us

