



A58/6

Deluxe Flexible Spine with Femur Heads

All other features as A58/5.
83 cm; 2.1 kg

A58/6



A58/7

Deluxe Flexible Spine with Femur Heads and Painted Muscles

Painted spines add a new dimension to demonstrations. Muscle origins (red) and insertions (blue) are painted on left innominate, femur and vertebrae. For further information see A58/5.

83 cm; 2.1 kg

L/D/E/F/S/P/I/J www.somatco.com

A58/7



A59/2

A59/1



Flexible Spine with Soft Intervertebral Discs

Soft Discs for greater realism.

This unique spine shows how the discs deform during normal and abnormal positioning. Use it to demonstrate any number of pathological conditions such as scoliosis, lordosis, kyphosis or subluxations. Herniation can be demonstrated with compression. In addition, the special mounting allows unobstructed vision viewing during demonstration and display. Includes dura mater of spinal cord and spinal nerves. Supplied on removable stand.

105 cm; 5.0 kg

VB84



VB84



A18/21

Mini Vertebral Column, elastic, on stand

Model with squama occipitalis and pelvis. The vertebral column is mounted flexibly to demonstrate natural movements and pathological changes. On a detachable stand.

44 cm; 0.35 kg

A18/21

Mini Vertebral Column, elastic

As A18/21, but without stand.
40 cm; 0.25 kg

A18/20

Connect With Us



Durable Flexible Spine

Probably the last spine you will ever need! With male pelvis, occipital plate, vertebral artery, spinal nerve exits and a dorsolateral disc prolapse between the 3rd and 4th lumbar vertebrae. Specially mounted on a flexible hose adding extra stability. Ideal for regular active use, such as in schools. Stand is not included, please see A59/8.

74 cm; 1.4 kg

A59/1

Durable Flexible Spine with Femur Heads

All other features as A59/1
83 cm; 2.3 kg

A59/2

Didactic Flexible Spine with Femur Heads

All other features as A58/8.
82 cm; 2.1 kg

A58/9

Didactic Flexible Spine

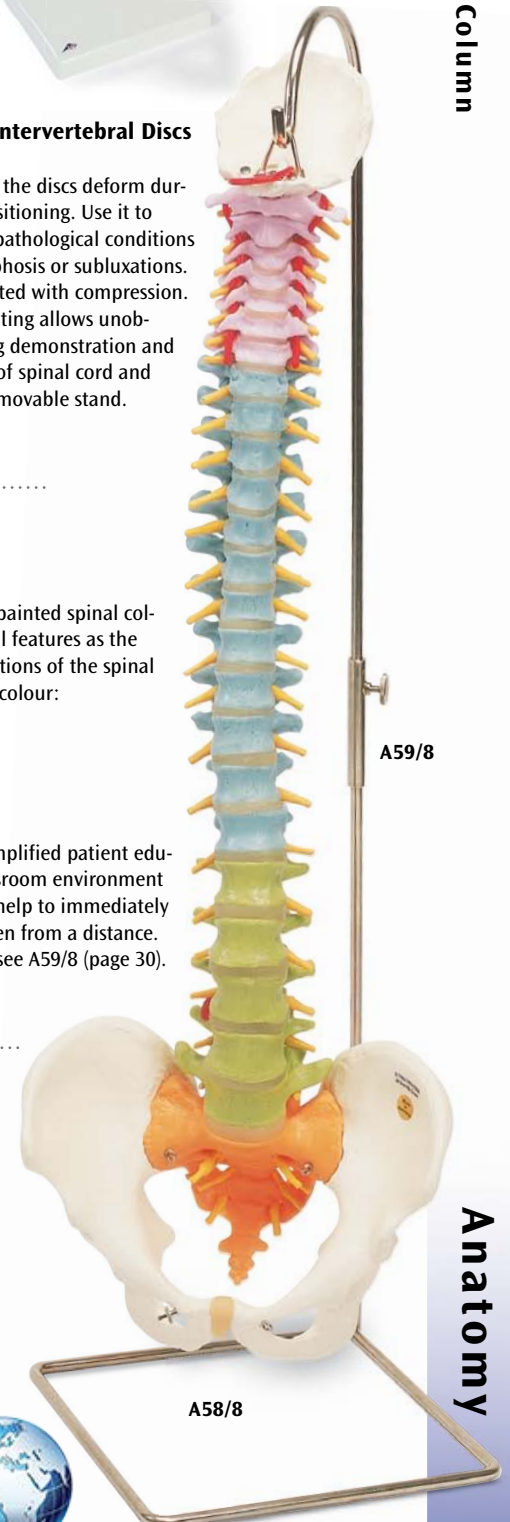
This superb new didactically painted spinal column has the same anatomical features as the A58/1. The five different sections of the spinal column are differentiated by colour:

- 7 cervical vertebrae
- 12 thoracic vertebrae
- 5 lumbar vertebrae
- Sacrum
- Coccyx

Use this spinal column for simplified patient education or for lessons in a classroom environment where the didactical colours help to immediately reinforce the explanation, even from a distance. Stand is not included, please see A59/8 (page 30).

74 cm; 1.9 kg

A58/8



A59/8

A58/8

