

### Disarticulated Half Skeleton

Complete with mounted skull, sternum, hyoid and spinal column.  
Hand and foot on wire. Supplied in a sturdy partitioned storage box.  
49x43x26.5 cm; 4 kg

A04



### Disarticulated Half Skeleton, with loosely articulated hand and foot (not shown)

Complete with mounted skull, sternum, hyoid and spinal column. Hand and foot loosely articulated on nylon cord. Supplied in a sturdy partitioned storage box.  
48.5x27x42.5 cm; 4 kg

A04/1

A04



### Sternum with Rib Cartilage (not shown)

A69

### Ribs 12 of one side (not shown)

A69/2

### Disarticulated Full Skeleton, with 3 part skull (not shown)

One hand and foot on wire, one loosely articulated. Supplied in a sturdy partitioned storage box.  
48.5x27x42.5 cm; 4.8 kg

A05/1



A05/2

### Disarticulated Painted Full Skeleton, showing muscles with 3-part skull

This special version is hand painted and numbered to show muscle origins in red and muscle insertions in blue on the left side. All bones and bony structures such as fissures, foramina and processes are hand numbered on the right side. The skull separates into 3 parts. One hand and foot on wire, one set of arms and leg loosely. Comes with a multilingual product manual to identify over 600 numbered anatomical structures. Supplied in a sturdy partitioned storage box.  
48.5x27x42.5 cm; 6 kg

L/E [www.3b-bone.com](http://www.3b-bone.com)

A05/2

### Intervertebral Discs on Nylon, 23 pieces (not shown)

All human cartilaginous discs loosely threaded on nylon in their correct sequence.

A09

### Hyoid bone on stand

A71/9

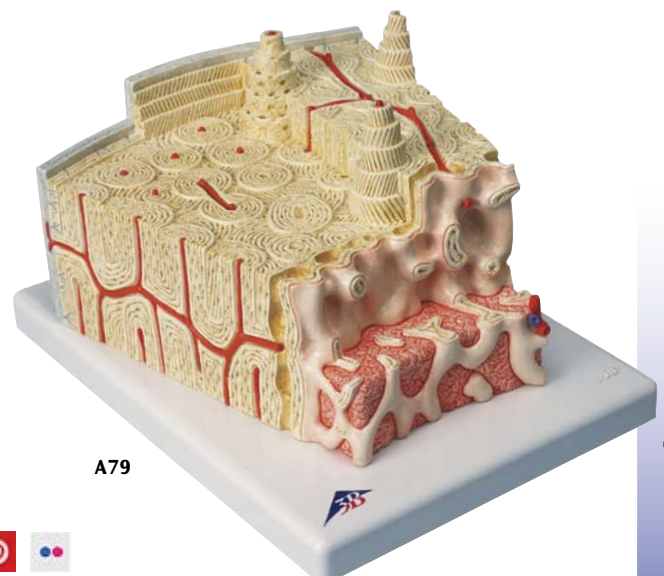


### 3B MICROanatomy™ Bone Structure

This extremely detailed model depicts a three dimensional section of a lamellar bone, showing the typical structure of a tubular bone enlarged 80 times. Various planes are shown in cross and longitudinal section through all levels of the bone, as well as a 2-plane section through the inner structure of the bone marrow. The typical elements of a lamellar bone are easily identified and help to understand its structure and function with the characteristic osteons, also referred to as Haversian systems. This model gives a clear illustration of the interplay of the individual components, such as spongy and compact substance, endosteum, cortical substance, osteocytes, Volkmann and Haversian canals. Supplied on base.  
26x19x14.5 cm; 0.8 kg

E/D/S/F/P/J [www.3b-bone.com](http://www.3b-bone.com)

A79



A79