



SmartFlow™

I V C A I R H A N D L I N G U N I T



EasyFlow™

I V C A I R H A N D L I N G U N I T

- **Microprocessor-driven ventilation with constant performances monitoring: Safe and standardized ventilation**
- **No vibration transmitted to the rack: Minimized anxiety- and stress-induced animal behaviour**
- **Designed to reduce running costs: Ability to serve up to four racks**
- **Ergonomic eye-level interface**



HOUSING



TECNIPLAST™

innovation through passionSM

1/ Safe and Standardized Ventilation

- Stand-alone Air Handling Unit: Easy and Smart Flow provide safe ventilation **without** transmitting **vibrations** to the rack, ensuring **standardization of the experiment** and **stress-free animals**.
- Microprocessor controlled, air flow driven ventilation with automatic filter load compensation: intra-cage pressure and ACH are consistent across the rack for **maximized standardization**. The system is independently **certified by TÜV**.
- Double filtration for both supplied and exhausted air: HEPA filters are DOP tested* on every single unit, assuring **high safety for operators and animals**.
- The air handling unit features the bag-out procedure: **maximum safety during filter change**.

**Test validating the entire system's filtration efficiency: this is performed when the filter is already installed on 100% of manufactured machines.*

2/ Low Running Costs

- Multilinking feature allows one AHU to serve up to four single sided-racks (or two double-sided): **reduction of maintenance** and **consumables** costs.
- New DC Electronic Commuted Motors (ECM): 50% **less power consumption** and 90% **less heat loss** than the previous generation of AHUs, guaranteeing **longer lifespan**.

3/ Ergonomics

- User friendly: the control panel at **eye-level** features an **intuitive interface**. Smart Flow's touch screen offers enhanced **flexibility**.
- **Light** and **easy to move**.
- HEPA filters and pre-filters are easy to check, remove and change: **easy maintenance**.

4/ High Monitoring and Security

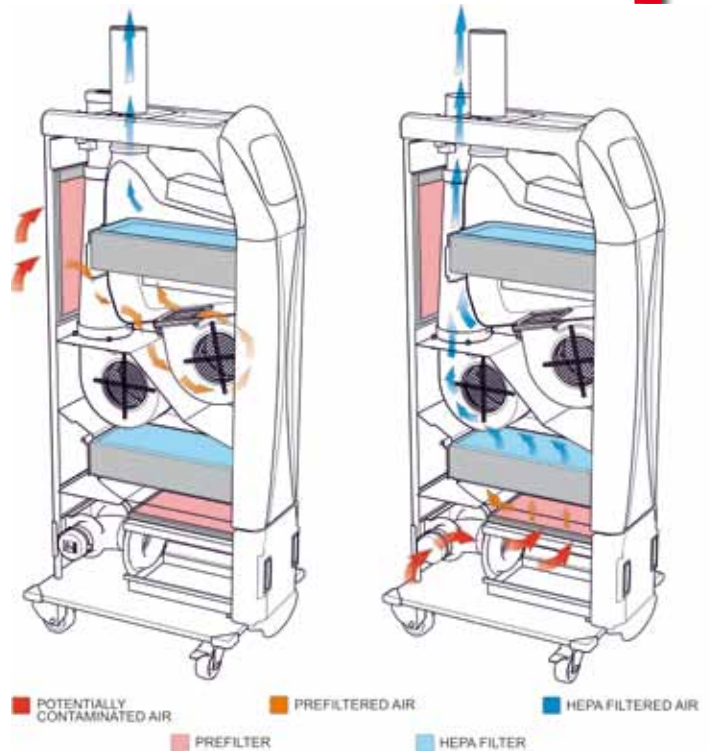
- Performance Monitoring Device (PMD) constantly monitors blower and filters load status: **monitored performances** and **intuitive interface**.
- Remote Alarm System (RAS): possibility to install a transmitter to **remote any alarm** recorded by the AHU.
- Wireless Data Management (WDM): wireless or wired software to **remotely monitor** and **control** all the working conditions and **parameters**.



HOUSING

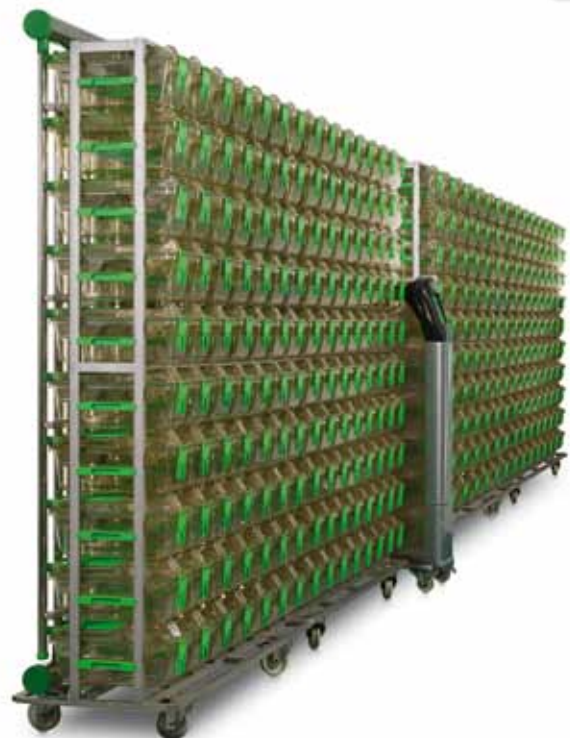
Smart Flow and Easy Flow IVC Air Handling Units

Safe and Standardized Ventilation



HEPA filtered air for both supply and exhaust

Low Running Costs



Multilinking feature allows
one AHU to serve 4 single-sided racks



Easy access to the filters



User-friendly interface



Blower and filters load status monitoring



RAS transmitter



RAS receiver

EASY AND SMART FLOW FEATURES

	Easy Flow	Smart Flow
Control Panel	Soft Touch Pad	Touch Screen (Latest Generation)
Settings	<ul style="list-style-type: none"> Type of Cage and Number of Cages Pressure Mode: Positive (Bioexclusion) Negative (Biocontainment) 	<ul style="list-style-type: none"> ACH (Air Changes per Hour) Type of Cage and Number of Cages Pressure Mode: Positive (Bioexclusion) Negative (Biocontainment) Two Password Levels HEPA Filters Lifespan Night Mode Language
RAS (Remote Alarm System) Transmitter	Optional	Optional
WDM (Wireless Data Management) Transmitter	Optional	Optional
Alarms	<ul style="list-style-type: none"> Alarm Codes shown (No Report Available) Fixed Alarm Threshold Range 	<ul style="list-style-type: none"> Alarm Descriptions shown (Chronology with Report Available on Display) Adjustable Alarm Threshold Range
Pressure Sensor	Not Available	Optional

TECHNICAL SHEET

Smart Flow and Easy Flow Air Handling Unit

Construction:

Stainless Steel - High resistance, sanitizable and eco-compatible ABS cover.

Connectivity:

Up to 4 single-sided racks or 2 double-sided or a mix, depending on the rack type.

Overall Dimensions (L x W x H):

329.5 x 657.5 x 1926/2086 mm - 12.97" x 25.89" x 75.83"/82.13" inch.

Airflow:

Pos/Neg, easily settable via the control panel.

Control:

Microprocessor driven (Automatic constant flow rate and filter load compensation) with Touch screen (Smart Flow) or LCD (Easy Flow) panel.

Power Consumption (serving four racks) (W):

< 90

Heat Load (W):

10

Communications:

Wireless / Serial Data Transfer / Dry contact integration to the BMS available.

HEPA Filters Efficiency:

99.995% at the most penetrating particle size - H14 HEPA filters. Each AHU is leak & HEPA filter installation tested (D.O.P.).

G4 Prefilters Arrestance:

≥ 90% (average synthetic dust weight arrestance).

Noise:

≤ 50 dB(A)



WDM

Options

- Pressure test monitoring device

Accessories

- RAS (Remote Alarm System)
- WDM (Wireless Data Management)

ENVIRONMENTAL SUSTAINABILITY: MINIMIZE IMPACT MAXIMIZING VALUE

What Tecniplast did to become leader in sustainability:

Company:

- Quality Management System Certification according to ISO 9001 and Environmental Management System Certification according to ISO 14001.
- Certified Environmental Report according to Eni Foundation Enrico Mattei Guidelines.

Products:

- Life Cycle Assessment (LCA) according to ISO 14040 and ISO 14044.
- Carbon Footprint according to PAS 2050.
- Environmental Data Sheet according to ISO 14025.
- Contribution to credits under the LEED rating system.



TECNIPLAST



Related Products

To maximise operational efficiency and learn more about these products contact your local representative.



Sealsafe Plus:

high containment, certified protection from allergens, high density and practicality of use. The IVC (r)evolution.



Sealsafe Plus RAT:

high containment, protection from allergens, high density and practicality of use.



Double Decker.

The ultimate 3D rat group housing system.



GP Decontamination Lock.

Full decontamination cycle, with 6 log reduction, in one hour all inclusive.

The unit may be used with Vaporized Hydrogen Peroxide generators from different vendors, gaseous Chlorine Dioxide generators and for chemical fogging.